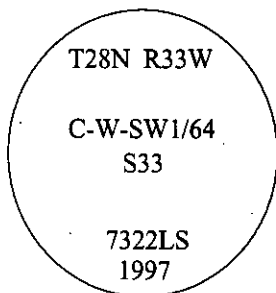


CERTIFIED CORNER RECORDATION

Corner C-W-SW 1/64 Sec. 33 T. 28N R. 33W P.M., MT Sanders County

- I. 1994 Certified Corner Recordation by H. Gene Warren, 2734S: Set by survey, a rebar, with a yellow cap mkd. "2734S".
- II. Found rebar, flush with the ground, with a yellow cap, mkd. "2734S". No bearing trees in record.
- III. Accepted the position of the found rebar, remonumented with, an aluminum rod, 20 ins. long, 3/4 in. diam., 17 ins. in the ground, with a 3 1/4 in. diam. aluminum cap, mkd. as shown:

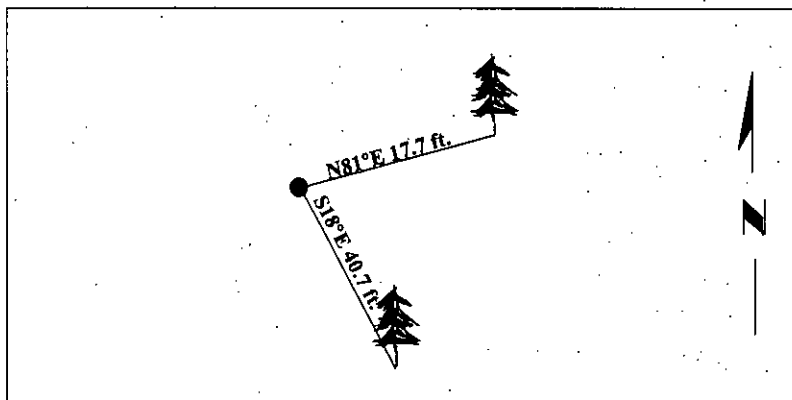


Established two bearing trees:

- A larch, 11 ins. diam., bears N81°E, 17.7 ft. dist., mkd. "C-W-SW 1/64 S33 BT".
- A larch, 12 ins. diam., bears S18°E, 40.7 ft. dist., mkd. "X" "BT".

Painted bearing trees and attached Land Survey Monument and Bearing Tree signs.

Magnetic Declination: 20° East.



SKETCH OF CORNER

CERTIFICATION

I, Thomas Hommel
certify the information shown herein is true and correct.

I, Alvah F. Hughes
certify that this Corner Record correctly represents work performed by me or under my direction in compliance with the "Corner Recordation Act" (70-22-101, et seq., M.C.A.)

Alvah F. Hughes
Signature of Surveyor & Seal

Date: 06/03/97

Reg. No.: 7322LS

Employer: U.S. FOREST SERVICE

Office of Clerk and Recorder, County of LINCOLN. This "corner record" was filed for record on JULY 31, 1997 was noted on the cross-index plat and is assigned page No. 981.7 in book No. _____

CORAL M. CUMMINGS
 County Official *By DUB*

