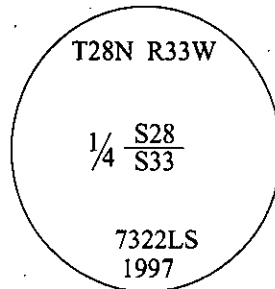


CERTIFIED CORNER RECORDATION

Corner 1/4 Sec. 28&33 T. 28N R. 33W P.M., MT Sanders County

- I. 1908 G.L.O. Original Record by Edwin R. McLain: Set a slate stone, 14x8x5 ins., 10 ins. in the ground for 1/4 sec. cor. mkd. "1/4" on the N. face. Raise a mound of stone, 2.0 ft. base, 1 1/2 ft. high, North of the corner. Established one bearing tree.
- II. Found a stone, 13x9x4 ins., 8 ins. above the ground, loosely set, mkd. "1/4" on the N. face. A 3.0 ft. diam. mound of stone, painted red, North, 3.0 ft. dist. from the found stone.
from which:
A pine, 21 ins. diam., bears N27°W, 79.2 ft. dist., with a healed face. (GLO-record)
- III. At the position of the found stone, set in its place, an aluminum pipe, 30 ins. long, 2 1/2 in. diam., 25 ins. in the ground, with a 3 1/4 in. diam. aluminum cap, mkd. as shown, surrounded in a rock collar.



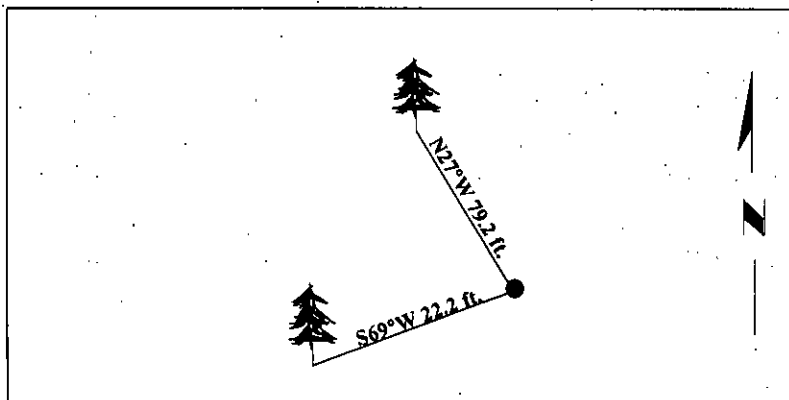
Established one bearing tree:

A fir, 17 ins. diam., bears S69°W, 22.2 ft. dist., mkd. "1/4 S33 BT".

Buried the original stone alongside the alumunim pipe.

Painted bearing trees and attached Land Survey Monument and Bearing Tree signs.

Magnetic Declination: 20° East.

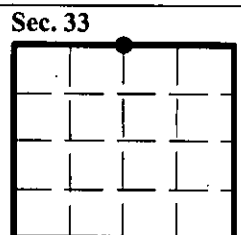


SKETCH OF CORNER

CERTIFICATION	
I. <u>Mark Federman</u>	certify the information shown herein is true and correct.
I. <u>Alvah F. Hughes</u>	certify that this Corner Record correctly represents work performed by me or under my direction in compliance with the "Corner Recordation Act" (70-22-101, et seq., M.C.A.)
<u>Alvah F. Hughes</u>	Signature of Surveyor: & Seal
Date: <u>05/29/97</u>	Reg. No.: <u>7322LS</u>
Employer: <u>U.S. FOREST SERVICE</u>	

Office of Clerk and Recorder, County of LINCOLN. This "corner record" was filed for record on JULY 31 1997 was noted on the cross-index plat and is assigned page No. 9814 in book No. CORAL M. CUMMINGS

County Official



• - corner this sheet