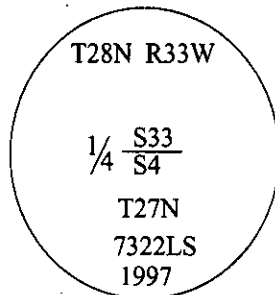


CERTIFIED CORNER RECORDATION

Corner 1/4 Sec. 4&33 T. 27&28N R. 33W P.M., MT Sanders County

- I. 1908 G.L.O. Original Record by Edwin R. McLain: Set a sandstone, 14x9x5 ins., 10 ins. in the ground for 1/4 sec. cor. mkd. "1/4" on the N. face. Raise a mound of stone, 2.0 ft. base, 1 1/2 ft. high, North of the corner. No bearing trees set.
- II. Found a stone, 8x5 ins., 10 ins. above the ground, loosely set in a rock collar, mkd. "1/4" on the S. face, (record-N. face). Stone was painted red. No bearing trees in the G.L.O. record.
- III. At the position of the found stone, set in its place, an aluminum pipe, 30 ins. long, 2 1/2 in. diam., 22 ins. in the ground, with a 3 1/4 in. diam. aluminum cap, mkd. as shown, surrounded in a rock collar.



Established two bearing trees:

A fir, 6 ins. diam., bears S43°E, 25.1 ft. dist., mkd. "1/4 S4 BT".

A fir, 19 ins. diam., bears S43°W, 41.5 ft. dist., mkd. "1/4 S4 BT".

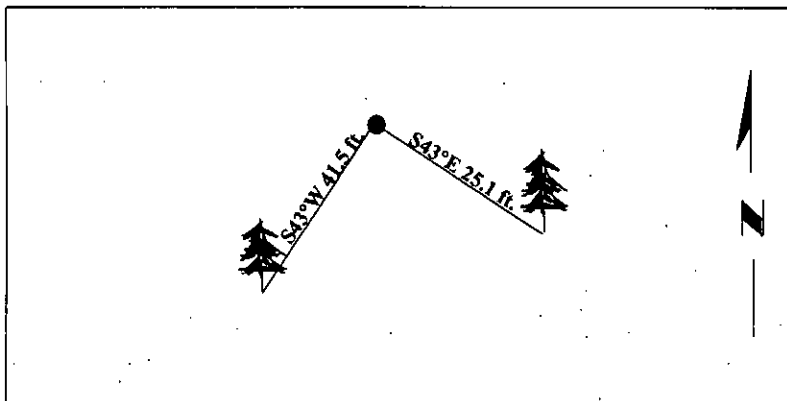
Buried the original corner stone alongside the alumunim pipe.

Painted bearing trees and attached Land Survey Monument and Bearing Tree signs.

*Note-No bearing trees within limits, available in section 33.

*Note-Both bearing trees have the same bearing of 43°.

Magnetic Declination: 20° East.



SKETCH OF CORNER.

CERTIFICATION

I, Mark Federman certify the information shown herein is true and correct.

I, Alvah F. Hughes certify that this Corner Record correctly represents work performed by me or under my direction in compliance with the "Corner Recordation Act", (70-22-101, et seq., M.C.A.).

Alvah F. Hughes
Signature of Surveyor & Seal

Date: 05/29/97

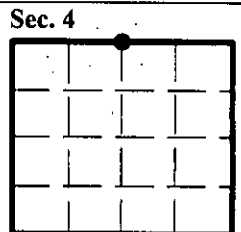
Reg. No.: 7322LS

Employer: U.S. FOREST SERVICE

Office of Clerk and Recorder, County of LINCOLN. This "corner record" was filed for record on JULY 31, 1997 was noted on the cross-index plat and is assigned page No. 9813 in book No. _____

CORAL M. CUMMINGS

County Official



• - corner this sheet