

INSTRUCTIONS

1. Original and/or subsequent record used to evaluate the corner position.
2. Description of evidence found, note discrepancies in the record, state method of establishing lost or obliterated corners.
3. Description of monument and accessories set to perpetuate the corner position.
4. Sketch of corner, show all pertinent data which can best be shown in a sketch example, corner marking, topography ties, position of accessories, etc.
5. Certification must be signed and sealed by Land Surveyor registered in the State of Montana.
6. Fill in Cross Index & Section Diagram at bottom of sheet.

CERTIFIED CORNER RECORDATION

Corner SE 1/16 S4 T. 28 N R. 33 W P.M.M. Lincoln County

RECORD:

A C.O.S. by Davis Surveying, Inc., recorded in 1986 at the Lincoln County Courthouse, along with a certified corner recordation form. Cross - Index plat is assigned Page No. 3426.

I. 1986 Davis Surveying, Inc.

I set a U.S.D.A. alum. cap and pipe, 3 1/4 inch diam. x 30 ins. long, marked;

T28N R33W
SE 1/16
S4
4975-S 1986

No bearing objects available.
Set an alum. post 1 ft. E. of the cor. with a survey marker sign No. LSM-130.

The cor. is set alongside a fence made of old cedar posts, 8 ins. or 10 ins. diam. in size, also having wooden rails (the fence bearing N. and S.).

FOUND:

On a survey of Delbert Biddle's property, June 5, 1993, looked for SE 1/16 cor. Couldn't find monument on quick search. Then used coordinates to find exact location. This point lies on the toe of a man made slope, but someone has dumped garbage, old buildings, and earth over the spot. We removed all debris to Native ground and found nothing (also used metal detector).

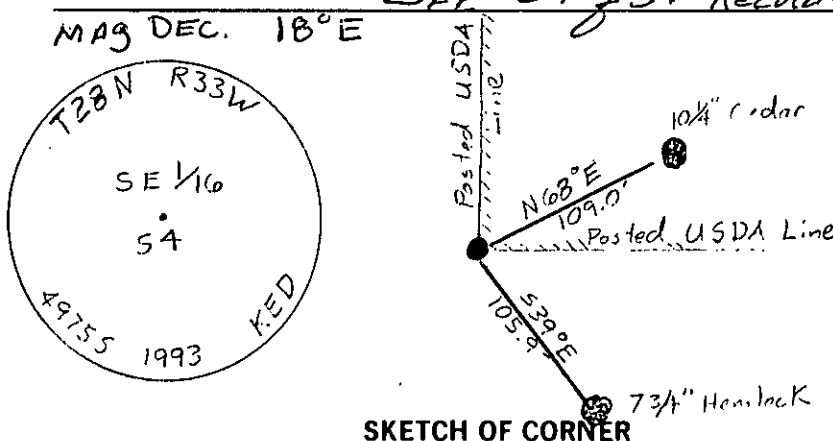
MAINTENANCE:

The SE 1/16 cor. was set by computed location from a sec. breakdown of Sec. 4, T28N, R33W, as described above by Davis Surveying, Inc. in 1986, on record in the Lincoln County Courthouse.

At the computed location, set a 3 1/4 inch diam. alum. cap on an alum. rod, 3/4 inch x 30 inch, 28 ins. in the ground, marked as shown below, from which:

A U.S.D.A. steel U post with LSM and boundary sticker bears N. 1 ft.
A 10 1/4 inch diam. Cedar bears N. 68° E., 109.0 ft. dist., scribed SE 1/16 S4 BT.
A 7 3/4 inch diam. Hemlock bears S. 39° E., 105.9 ft. dist., scribed SE 1/16 S4 BT.
Painted scribes red and 6 inch red bands around both trees. Attached Bearing Tree and Land Survey Monument signs to both trees. Note: When set, new monument area had been completely relandscaped (looks beautiful).

SE 1/16 S4. Recorded 1986 For Section Breakdown



CERTIFICATION

I, Glenn M. Knodle
certify the information shown herein is true and correct.

Glenn M. Knodle
Registered Professional Engineer & Land Surveyor, Chief

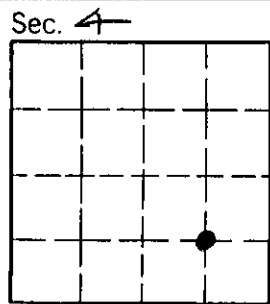
I, Kevin Davis
certify that this record correctly represents work performed by me or under my direction in compliance with the "Corner Recordation Act" (70-2-101) of the M.C.A.

Kevin Davis
Registered Professional Engineer & Land Surveyor, Seal

Date: 11/17/93
Employer: Davis Surveying, Inc.

Office of Clerk and Recorder, County of Lincoln. This "corner record" was filed for record on Dec 3, 1993 was noted on the cross-index plat and is assigned page No. 5392, in book No. _____

Coral M. Cummins
County Official



Cross Index No. SE 1/16 S4 T. 28 N R. 33 W P.M.M. • - corner this sheet

INSTRUCTIONS TO SURVEYORS FOR COMPLETION OF CERTIFIED CORNER RECORDATION FORMS

I. ORIGINAL AND/OR SUBSEQUENT RECORD:

This item should describe or quote those portions of the original or subsequent record which were used in evaluating the corner position. The original record will usually be the General Land Office field notes. Subsequent record can come from several sources: Previously filed corner records, maps and plats, private and public records, etc. Some of the subsequent record, even though not in the public record, but known to have validity by the surveyor, may be quoted and appropriately noted.

The record data helps support the reestablished corner position because it clearly shows what history the surveyor based his corner position on. In some cases, however, the record may be unknown or not pertinent. A statement to that effect should appear on the corner record.

II. DESCRIPTION OF EVIDENCE FOUND OR METHOD OF LOCATING CORNER POSITION:

This item will describe the original or subsequent record evidence found. If portions of the found evidence cannot be reconciled with the record, then the disregarded record should be noted, and, if possible, an opinion as to its cause narrated.

If no physical evidence of the original or subsequent monuments and accessories can be found, then the method used to reestablish the lost or obliterated corner (single proportion, fence intersection, parol evidence, terrain calls, centerline of road, etc.) shall be indicated.

III. DESCRIPTION OF MONUMENTS AND ACCESSORIES SET TO PERPETUATE THE CORNER POSITION:

This item should list all details about the corner and its location which will help exclusively identify the corner position; including size and type of monument, how marked if not shown in sketch, and distinguishing topographic calls which help locate the corner. In many cases, instructions on how to find the corner should be included.

References or ties to other corners are optional and may be drawn on the face or back of the corner record form, or references to Certificate of Survey may be made. Separate drawings may be attached to the corner form.

If state plane coordinate values for the corner position are shown, then the control upon which they are based should be indicated.

IV. SKETCH OF CORNER:

This item will usually show how a found or set corner is marked and may also show topography or accessory monuments found or set and their relation to the corner. There is no stipulated format; the sketch could be transcribed field note entries.

V. CERTIFICATION:

The name and signature of the ground party chief is optional.

The Surveyor who performed or directed the field work which is depicted on the "Certified Corner Record" shall sign and affix his seal in the Certification.

The employer blank is optional but useful in tracking down original field note data or adjacent record if, in the future, questions arise about the corner.

VI.

The Cross Index at the bottom of the page should be completed by the Surveyor. Only the single Township Index where the corner is filed shall be completed.

The lower righthand corner is a corner location diagram and should have the pertinent section filled in at the top and a closed circle indicating the appropriate corner position in the section filled in. This is intended to be an aid in searching the "Record" once it has been filed.

