

CERTIFIED LAND CORNER RECORDATION

SECTION 17 TWP. 28 N., R. 33 W., M.P.M.

DESCRIPTION OF CORNER EVIDENCE FOUND, AND ORIGINAL RECORD (IF KNOWN)

NE Corner found Original Stone in mound of stone 7 B.T.s
E $\frac{1}{4}$ Corner found Original stone in mound and 2 B.T.s
Believe north line was never run. Notes appear fraudulent.

DESCRIPTION OF MONUMENT AND ACCESSORIES ESTABLISHED
TO PERPETUATE THE ORIGINAL LOCATION OF THIS CORNER:

Date of work: May, 1976

SEE REVERSE SIDE

SKETCH, WITH COURSE AND DISTANCE TO ADJACENT CORNERS IF DETERMINED IN THIS SURVEY.
(MAY SKETCH OR PASTE REPRODUCTION ON REVERSE SIDE.)

SEE REVERSE SIDE

Surveyor's Seal

Jack H. Ninneman

I, _____
certify that the information shown herein is true and
correct.

Jack H. Ninneman
Signature of Ground Party Chief

I, Jack W. Ninneman
certify that I have carefully performed or reviewed the
work done on the diagrammed corner as reported on this
recordation form and approve the same.

Jack W. Ninneman
Signature of Surveyor

DIAGRAM OF CORNER:

N. See reverse
Side

= Corner recorded on the sheet

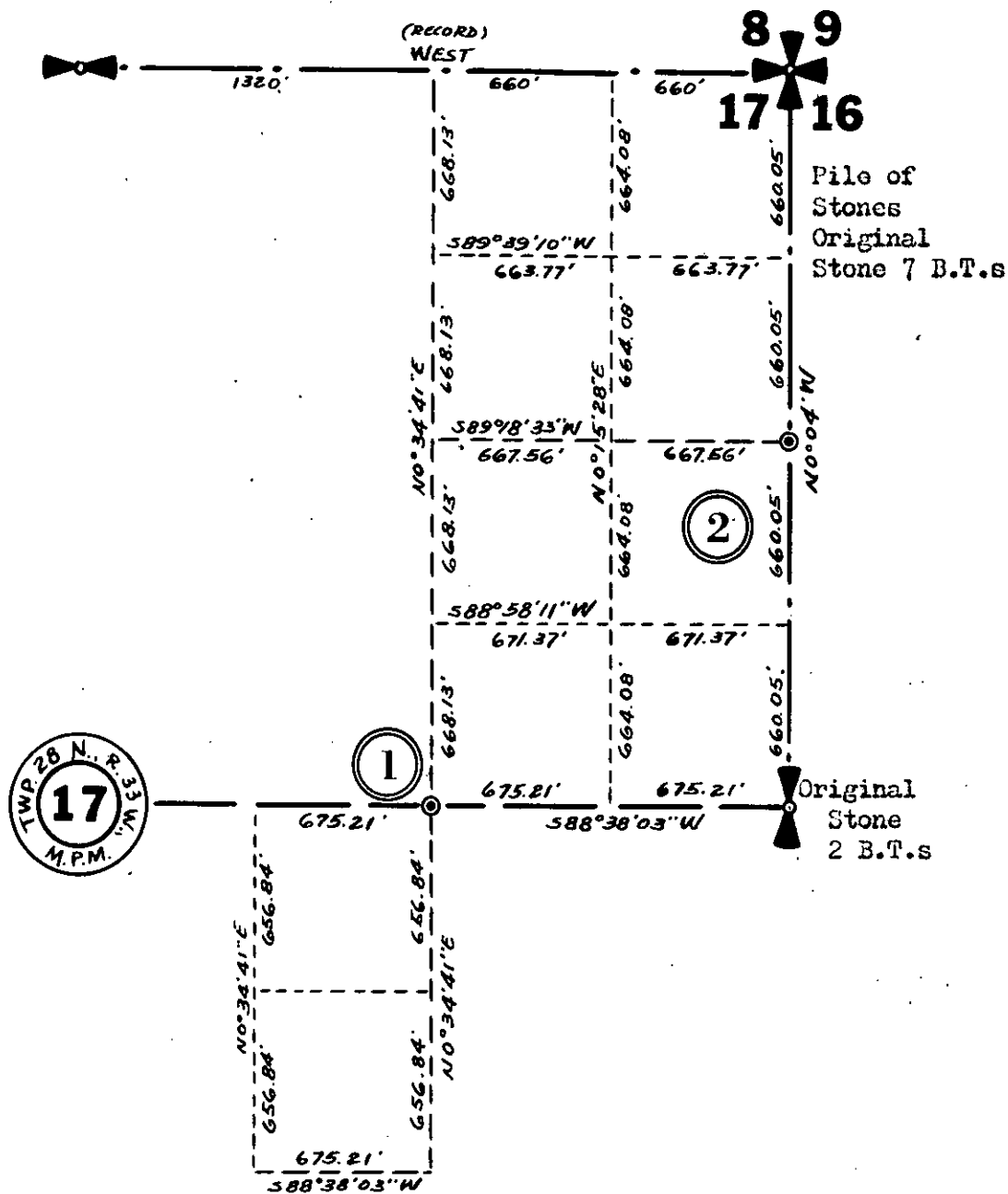
534 E.S.
Registration Number

Office of Clerk and Recorder, County of Lincoln

This "corner record" was filed for record on the 9th day of June, 1976, was noted on the cross-index plat and is
assigned page No. 481, in book No. 1

Eleanor Z. Vaughn by Sherry Davis, deputy
County Official

TWP. 28 N., R. 33 W.



- (1) Found a Staub Ey U.S.F.S Replaced with a steel rod for C 1/16 E:
a 12" Larch bears S. 71° W 18.20 Ft.
a 16" Hemlock bears N 45° E 6.50 Ft.
Both trees scribed C 1/16 E B.T. & Posted
- (2) Set a Steel Rod for N 1/16 from which
a 18" Fir Bears N 78° E 64.0 Ft.
a 12" Fir Bears N 37° W 45.70 Ft.
Both trees are scribed N 1/16 S 16 & Posted