

CERTIFIED CORNER RECORDATION

Corner South Quarter Corner, Section 3 T. 28 N. R. 33 W. P.M.M. Lincoln County

1917 Original General Land Office record by Guy H. Richardson and Chas. F. Moore, Book 7257 Page 14 and 15

"Set a granite stone, 14 x 10 x 6 ins., 11 ins. in the ground, for $\frac{1}{4}$ sec. cor., marked $\frac{1}{4}$ on N. face, from which

A tamarack, 6 ins. in diam., bears N. $40\frac{1}{4}^{\circ}$ W., 37 lks. dist., marked $\frac{1}{4}$ S. 3 BT.

A tamarack, 8 ins. in diam., bears S. 17° E., 32 lks. dist., marked $\frac{1}{4}$ S. 10 BT."

2007 remonumentation by Michael J. Drenth 10684LS:

Found original General Land Office granite stone, 11 x 9 x 5 inches, 7 inches in the ground, firmly set, with " $\frac{1}{4}$ " chiseled on the north face; from which:

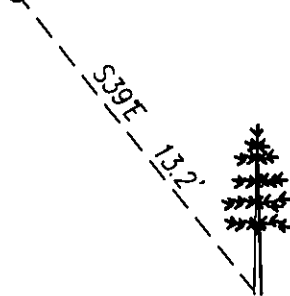
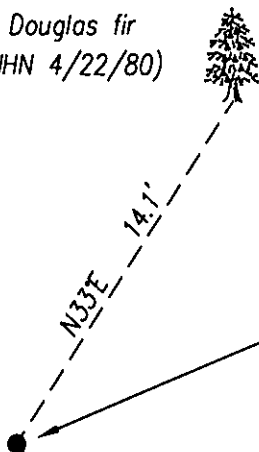
A Douglas fir, 17 inches diameter, bears N. 33° E., 14.1 feet distant, with overgrown face and bearing tree sign marked "S33°W 14.1' JHN 4/22/80"

A larch, 13 inches diameter bears S. 39° E., 13.2 feet distant, with overgrown face and bearing tree sign marked "N38°W 12:0' JHN 4/22/80"

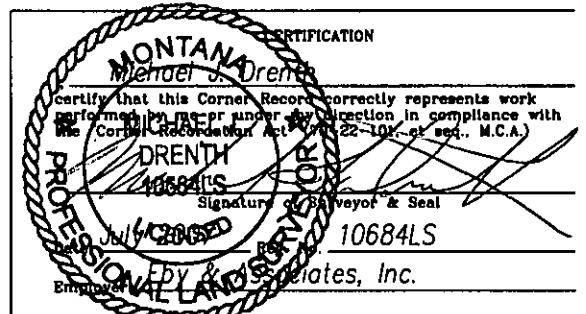
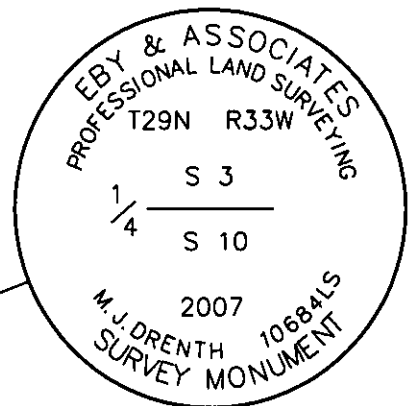
In the position of the original General Land Office stone, I set an 8 inch long spike with plastic chaser, 24 inches below ground, as a memorial. I then set an aluminum pipe, 2 1/2 inches diameter, 30 inches long, 24 inches in the ground, with a 3 1/4 inch diameter aluminum cap, marked as shown, and set in a 1 1/2 foot diameter stone collar.

I attach a new Land Survey Monument sign to the 13" larch bearing tree with my found bearing and distance labled. All distances measured with steel tape. All bearings measured with Silva hand compass, 16' east magnetic declination.

17" Douglas fir
(by JHN 4/22/80)



13" larch
(by JHN 4/22/80)



Office of Clerk and R. 204749 BOOK: CCR CC&R'S PAGE: 11077 Pages: 1

STATE OF MONTANA LINCOLN COUNTY

record" was filed for RECORDED: 07/31/2007 11:31 KOI: CC&R'S

was noted on the CCR FEE: \$0.00 TAMMY D. LAUER CLERK AND RECORDER

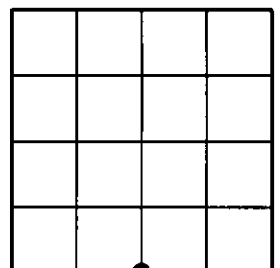
book No. TO: FILED BY Bill Blomdell, deputy in

County Official

Cross Index No. E - 15 T. 28N R. 33W PMM

Adopted July 1, 1981, Montana Board of Professional Engineers & Land Surveyors

Sec. 3



• corner this sheet