

INSTRUCTIONS

1. Original and/or subsequent record used to evaluate the corner position.
2. Description of evidence found, note discrepancies in the record, state method of establishing lost or obliterated corners.
3. Description of monument and accessories set to perpetuate the corner position.
4. Sketch of corner, show all pertinent data which can best be shown in a sketch example, corner marking, topography ties, position of accessories, etc.
5. Certification must be signed and sealed by Land Surveyor registered in the State of Montana.
6. Fill in Cross Index & Section Diagram at bottom of sheet.

CERTIFIED CORNER RECORDATION

Corner M.S. 5278-4 (Chinook Lode) T. 28N R. 31W P.M.M. Lincoln County

ORIGINAL RECORD: (1903 G.L.O.) Set a post 4" square, 4 ft. long, 2 ft. deep, marked 4-5278 for cor no. 4, raised a mound of stone 3 ft. north of cor.; no bearing objects available for reference.

SUBSEQUENT RECORD: None found.

EVIDENCE FOUND: No evidence was found.

PERPETUATION: At the calculated position I set a 2 1/2" Aluminum cap on 5/8"x30" rebar marked as shown in the sketch below, and drove a steel post 1' northwest of the corner.

From which:

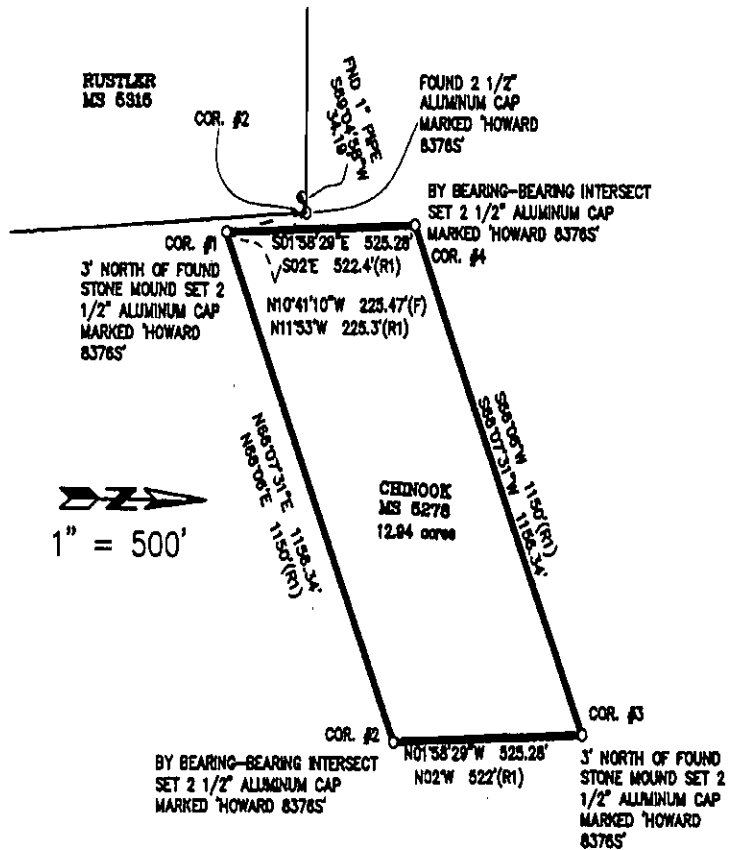
RM - a Spruce, 27 ins. diam., bears S71°E, 32.8' dist., scribed "4-5278 BT".

RM - a Spruce, 27 ins. diam., bears S10°W, 32.8' dist., scribed "4-5278 BT".

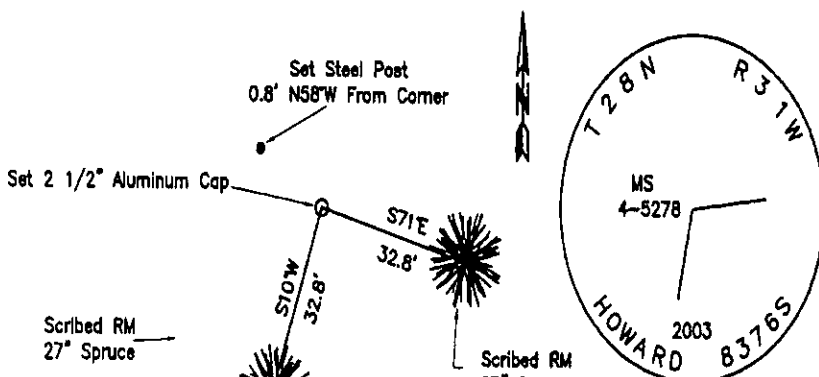
The RM trees have a BT tag, are snow blazed on the face, a 6" Red band at 6' & a Land Survey "Attention" sign on the back.

Date of Survey: August 2003

Decl. = 17°E



Doc# 170793 ccr 10627



CERTIFICATION
 I, Kurt A. Luebke (13237LS)
 certify the information shown herein is true and correct.
Kurt A. Luebke
 Signature Ground Party
 I, Glenn R. Howard
 certify that this Corner Record correctly represents work performed by me or under my direction in compliance with the Montana Recordation Act (70-22-101, 102, 103, M.C.A.)
Glenn R. Howard
 Signature of Surveyor & Seal

