

- INSTRUCTIONS**
1. Original and/or subsequent record used to evaluate the corner position.
 2. Description of evidence found, note discrepancies in the record, state method of establishing lost or obliterated corners.
 3. Description of monument and accessories set to perpetuate the corner position.
 4. Sketch of corner, show all pertinent data which can best be shown in a sketch example, corner marking, topography ties, position of accessories, etc.
 5. Certification must be signed and sealed by Land Surveyor registered in the State of Montana.
 6. Fill in Cross Index & Section Diagram at bottom of sheet.

CERTIFIED CORNER RECORDATION

Corner M.S. 5278-3 (Chinook Lode)

T. 28N R. 31W P.M.M. Lincoln County

ORIGINAL RECORD:

(1903 G.L.O.) Set a post 4" square, 4 ft. long, 2 ft. deep, marked 3-5278 for cor no. 3, raised a mound of stone 3 ft. north of cor.; no bearing objects available for reference.

SUBSEQUENT RECORD: None found.

EVIDENCE FOUND: Found a mound of stone.

PERPETUATION:

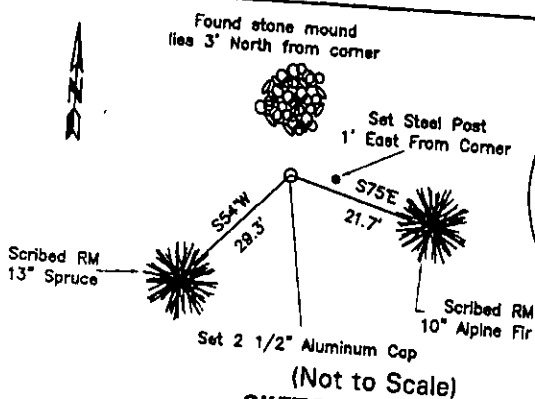
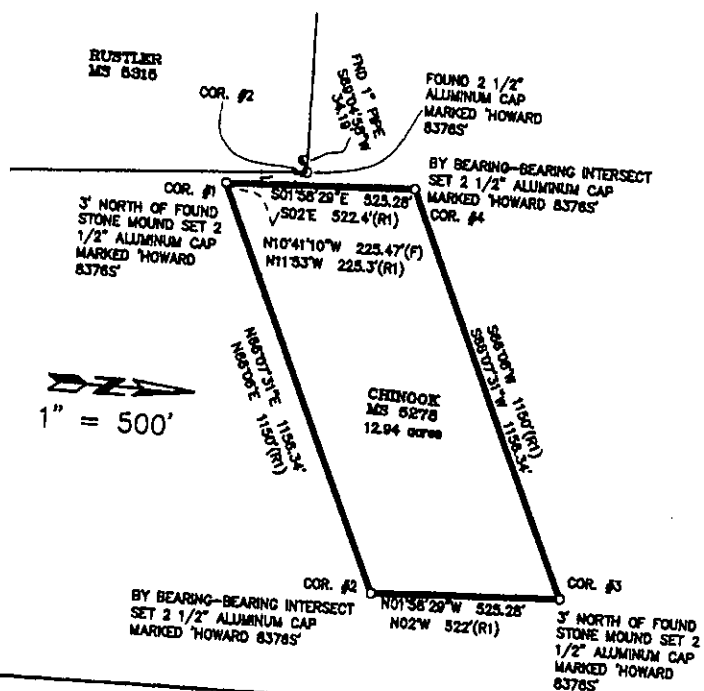
At a position 3' south of the mound of stone I set a 2 1/2" Aluminum cap on 5/8"x30" rebar marked as shown in the sketch below, and drove a steel post 1' east of the corner.
From which:

RM - an Alpine Fir, 10 ins. diam., bears S75°E, 21.7' dist., scribed "3-5278 BT".
RM - a Spruce, 13 ins. diam., bears S54°W, 29.3' dist., scribed "3-5278 BT".

RM - a Spruce, 13 ins. diam., bears S54°W, 29.3' dist., scribed "3-5278 BT".

The RM trees have a BT tag, are snow blazed on the face, a 6" Red band at 6' & a Land Survey "Attention" sign on the back.

Date of Survey: August 2003
Decl. = 17°E



SKETCH OF CORNER

Office of Clerk and Recorder, County of Lincoln

ord" was filed for record on September 23, 2003

s noted on the cross index plat and is assigned page No. 17079e, in
 k No. 10026

File No. 10626

Cross Index No. G-3 T. 28N R. 31W PMM

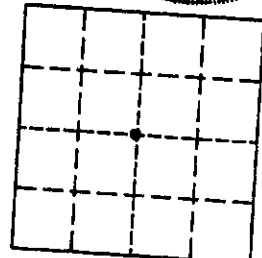
CERTIFICATION
I, Kurt A. Luebke (13237LS)
certify the information shown herein is true and correct.
Kurt A. Luebke
Signature Ground Party Chief

1. Glenn R. Howard
 certify that this Corner Record correctly represents his work performed
 by me or under my direction in compliance with the "Corner
 Recordation Act" (70-22-101, et seq., M.C.A.)
Glenn R. Howard **GLENN R.**
 Signature of Surveyor & **HOWARD**

Date: September 20, 200
Employer: DJ&A P. C.

This "corner

Sec. 7



- - corner this sheet