

## INSTRUCTIONS

1. Original and/or subsequent record used to evaluate the corner position.
2. Description of evidence found, note discrepancies in the record, state method of establishing lost or obliterated corners.
3. Description of monument and accessories set to perpetuate the corner position.
4. Sketch of corner, show all pertinent data which can best be shown in a sketch example, corner marking, topography ties, position of accessories, etc.
5. Certification must be signed and sealed by Land Surveyor registered in the State of Montana.
6. Fill in Cross Index & Section Diagram at bottom of sheet.

## CERTIFIED CORNER RECORDATION

Corner M.S. 5278-2 (Chinook Lode) T. 28N R. 31W P.M.M. Lincoln County

ORIGINAL RECORD: (1903 G.L.O.) Set a post 4" square, 4 ft. long, 2 ft. deep, marked 2-5278 for cor no. 2, raised a mound of stone 3 ft. north of cor.; no bearing objects available for reference.

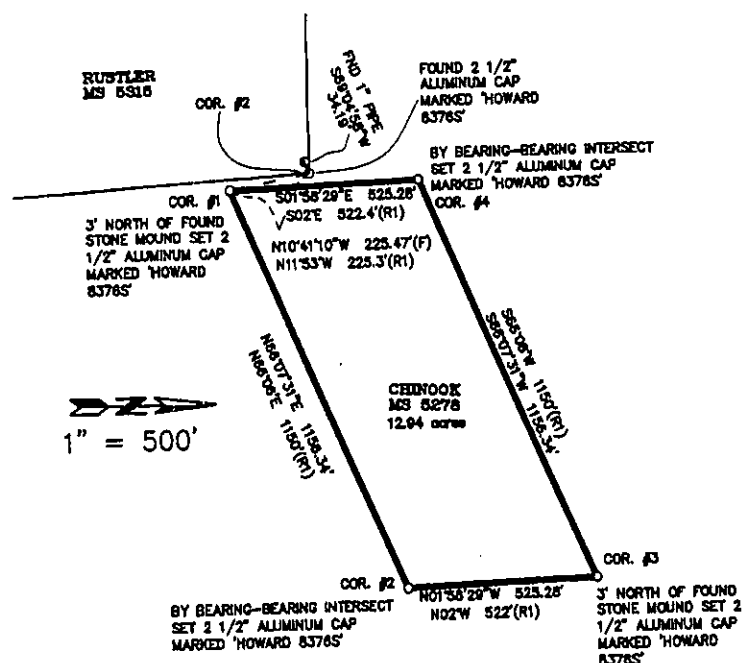
SUBSEQUENT RECORD: None found.

EVIDENCE FOUND: This corner falls in the fill slope of an old road and no evidence was found.

PERPETUATION: At the calculated position I set a 2 1/2" Aluminum cap on 5/8"x30" rebar marked as shown in the sketch below, and drove a steel post 1' southeast of the corner and pile rock, there are no trees for reference marks.

This corner falls in a steep avalanche chute  $\pm 70'$  from the west edge and  $\pm 10'$  below and old overgrown road.

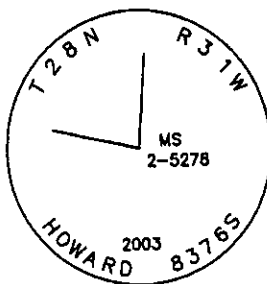
Date of Survey: August 2003  
Decl. =  $17^{\circ}\text{E}$



Set Steel Post 1'  
Southwest From Corner

Set 2 1/2" Aluminum Cap

(Not to Scale)  
SKETCH OF CORNER



CERTIFICATION  
I, Kurt A. Luebke (13237LS)

certify the information shown herein is true and correct.

*Kurt A. Luebke*  
Signature Ground Party Chief

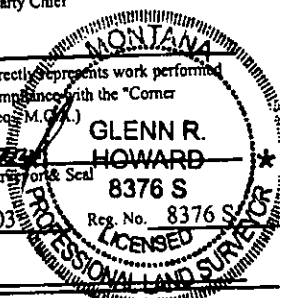
I, Glenn R. Howard

certify that this Corner Record correctly represents work performed by me or under my direction in compliance with the "Corner Recordation Act" (70-22-10), of the M.C.A.

*Glenn R. Howard*  
Signature of Surveyor and Seal

Date: September 20, 2003

Employer: DJ&A P.C.



Office of Clerk and Recorder, County of Lincoln This "corner

record" was filed for record on September 23, 2003

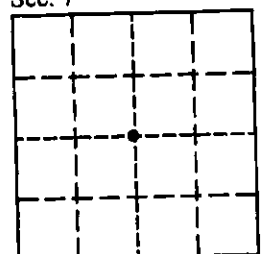
was noted on the cross index plat and is assigned page No. 170791, in

book No. 10625

*Jeannie Alvarado*  
County Official

Cross Index No. G-3 T. 28N R. 31W PMM

Sec. 7



• - corner this sheet