

INSTRUCTIONS

1. Original and/or subsequent record used to evaluate the corner position.
2. Description of evidence found, note discrepancies in the record, state method of establishing lost or obliterated corners.
3. Description of monument and accessories set to perpetuate the corner position.
4. Sketch of corner, show all pertinent data which can best be shown in a sketch example, corner marking, topography ties, position of accessories, etc.
5. Certification must be signed and sealed by Land Surveyor registered in the State of Montana.
6. Fill in Cross Index & Section Diagram at bottom of sheet.

CERTIFIED CORNER RECORDATION

Corner M.S. 5278-1 (Chinook Lode) T. 28N R. 31W P.M.M. Lincoln County

ORIGINAL RECORD: (1903 G.L.O.) Set a post 4" square, 4 ft. long, 2 ft. deep, marked 1-5278 for cor no. 1, raised a mound of stone 3 ft. north of cor., cor no. 2 of survey no. 5315 bears N11°53'W 225.3 ft.; no bearing objects available for reference.

SUBSEQUENT RECORD: None found.

EVIDENCE FOUND: Found a mound of stone and the position of corner 2 of survey 5315 bears N10°41'10"W, 225.47' away.

PERPETUATION: At a position 3' south of the mound of stone I set a 2 1/2" Aluminum cap on 5/8"x30" rebar marked as shown in the sketch below, and drove a steel post 1' west of the corner. This position fits well with record ties to corner 2-5315 and location corner 5315.

From which:

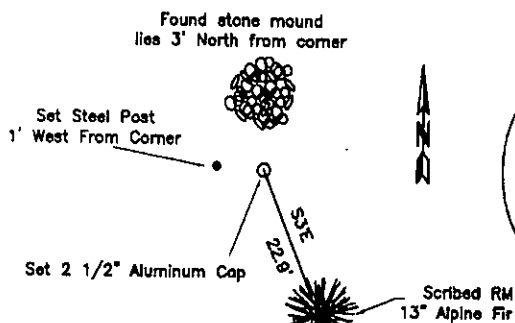
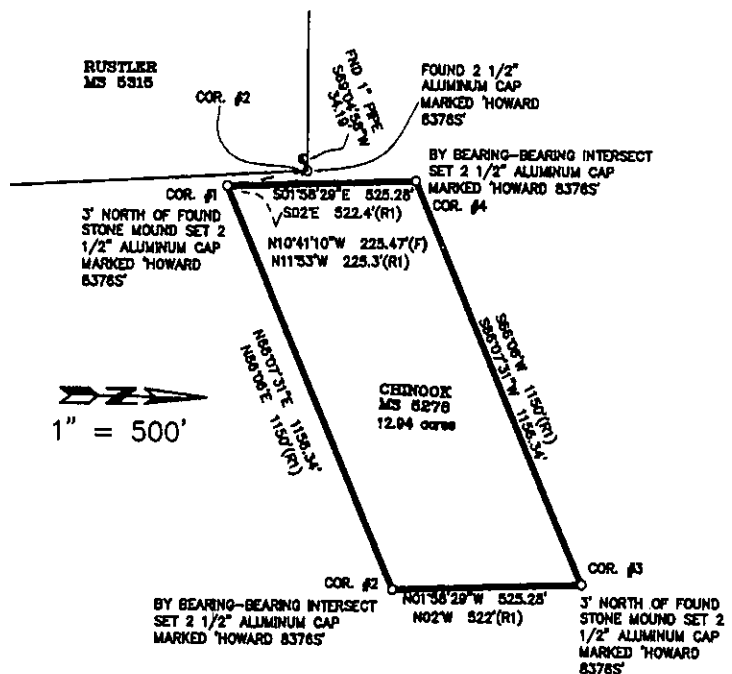
RM - an Alpine Fir, 13 ins. diam., bears S3°E, 22.9' dist., scribed "1-5278 BT".

The RM tree has a BT tag, is snow blazed on the face, a 6" Red band at 6' & a Land Survey "Attention" sign on the back.

This corner falls just out of the creek bottom in heavy alder.

Date of Survey: August 2003

Decl. = 17°E



(Not to Scale)
SKETCH OF CORNER

CERTIFICATION
I, Kurt A. Luebke (13237LS)

certify the information shown hereon is true and correct.

Kurt A. Luebke
Signature Ground Party Chief

I, Glenn R. Howard

certify that this Corner Record correctly represents work performed by me or under my direction in compliance with the Montana Corner Record Act (70-22-101, et seq., M.C.A.)

Glenn R. Howard
Signature of Surveyor

Date: September 20, 2003

Employer: DJ&A P. C.

Office of Clerk and Recorder, County of Lincoln This "corner

record" was filed for record on September 23, 2003

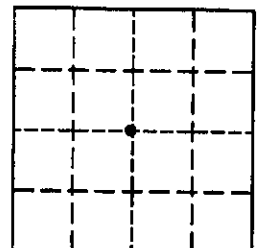
was noted on the cross index plat and is assigned page No. 170700, in

book No. 10624

Glenn R. Howard
County Official

Cross Index No. G-3 T. 28N R. 31W PMM

Sec. 7



• - corner this sheet