

INSTRUCTIONS

1. Original and subsequent record used to evaluate the corner position.
2. Description of evidence found, note discrepancies in the record, state method of establishing lost or obliterated corners.
3. Description of monument and accessories set to perpetuate the corner position.
4. Sketch of corner, show all pertinent data which can best be shown in a sketch example, corner marking, topography ties, position of accessories, etc.
5. Certification must be signed and sealed by Land Surveyor registered in the State of Montana.
6. Fill in Cross Index & Section Diagram at bottom of sheet.

CERTIFIED CORNER RECORDATION

Corner M.S. 5315-3 (Rustler) T. 28N R. 31W P.M.M. Lincoln County

ORIGINAL RECORD: (1898 G.L.O.) Set a spruce post 4" square, 6 ft. long, 2 ft. in ground, scribed 3-5315; from which:
A spruce, 18 ins. diam., bears N35°35'E, 63.7 ft. dist., marked BT 3-5315.
A spruce, 6 ins. diam., bears N77°30'E, 30.2 ft. dist., marked BT 3-5315.

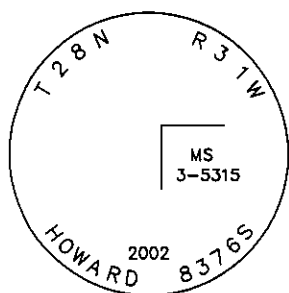
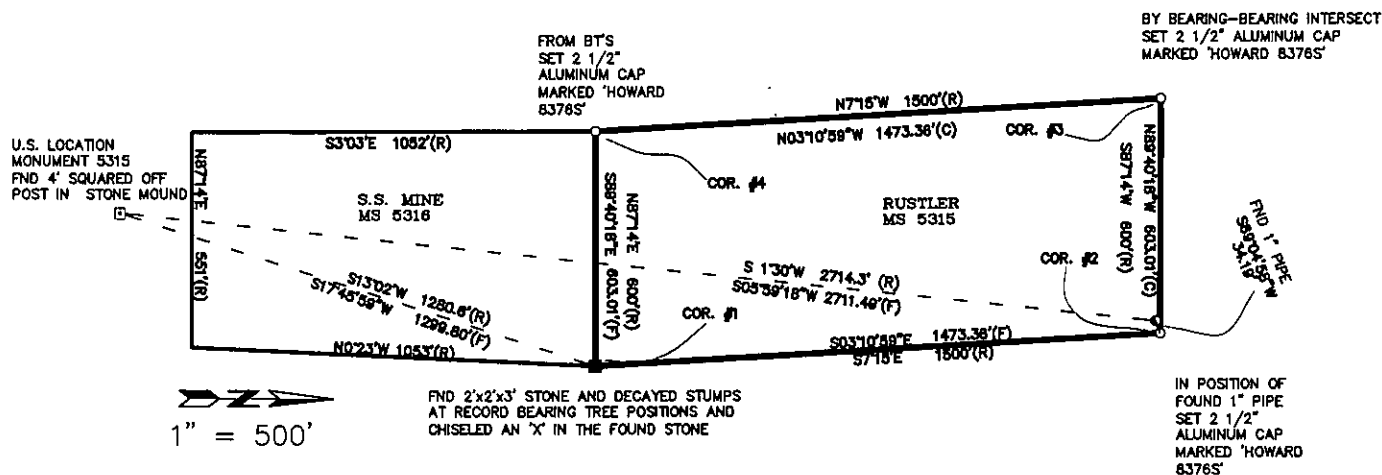
SUBSEQUENT RECORD: None found.

EVIDENCE FOUND: Found no evidence of original post or accessories.

PERPETUATION: At the position calculated by a bearing - bearing intersect from the adjacent claim corners I set a 2 1/2" Aluminum cap on 5/8"x30" rebar marked as shown in the sketch below, and drove a steel post alongside. This corner falls in an alder and brush thicket alongside of an avalanche chute and there are no trees in the area to use as BT's.

Date of Survey: August 2002

Decl. = 17°E



(Not to Scale)
SKETCH OF CORNER

CERTIFICATION
I, Kurt A. Luebke (13237LS)

certify the information shown herein is true and correct.

I, Glenn R. Howard

certify that this Corner Record is correctly recorded and performed by me or under my direction in compliance with the Montana Corner Recordation Act" (70-22-101, et seq., M.C.A.)

Signature of Surveyor

Date: December, 2002 Reg. No. 8376 S

Employer: DJ&A P. C.

Office of Clerk and Recorder, County of Lincoln This "corner

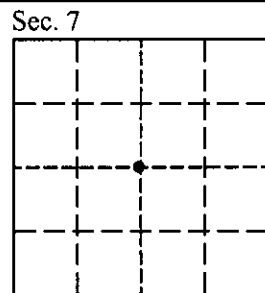
record" was filed for record on 10th December 2002

was noted on the cross index plat and is assigned page No. 10576, in

book No. Correl. M. Cummins & Co.

County Official

Cross Index No. G-3 T. 28N R. 31W PMM



• - corner this sheet