

INSTRUCTIONS

1. Original and subsequent record used to evaluate the corner position.
2. Description of evidence found, note discrepancies in the record, state method of establishing lost or obliterated corners.
3. Description of monument and accessories set to perpetuate the corner position.
4. Sketch of corner, show all pertinent data which can best be shown in a sketch example, corner marking, topography ties, position of accessories, etc.
5. Certification must be signed and sealed by Land Surveyor registered in the State of Montana.
6. Fill in Cross Index & Section Diagram at bottom of sheet.

CERTIFIED CORNER RECORDATION

Corner M.S. 5315-1 (Rustler) T. 28N R. 31W P.M.M. Lincoln County

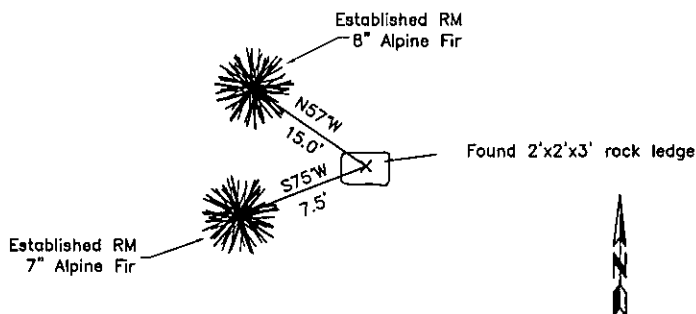
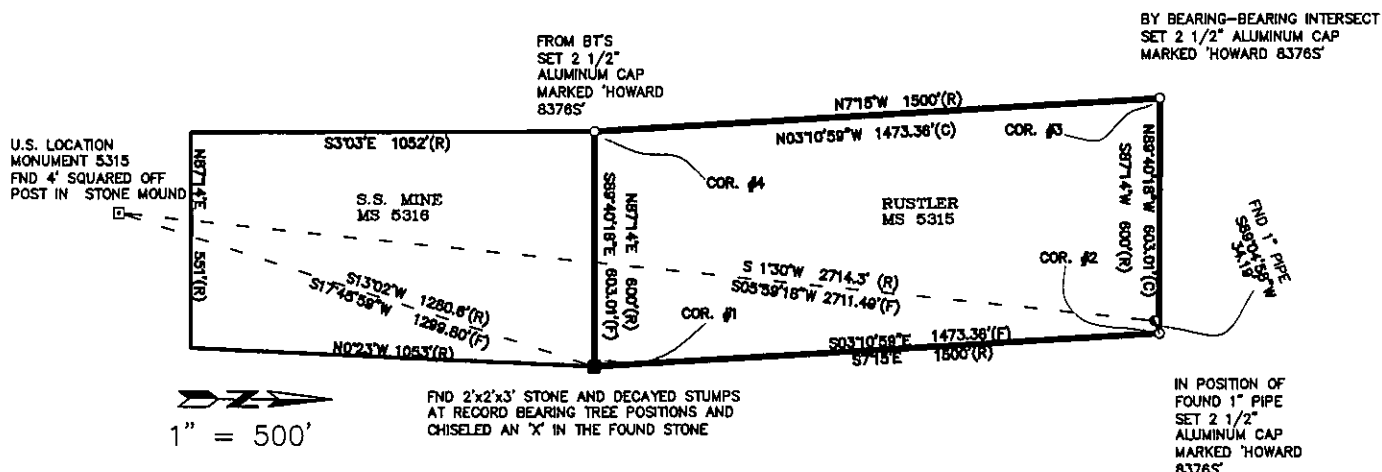
ORIGINAL RECORD: (1898 G.L.O.) A rock in place rising 2 feet above ground, chiseled with a cross (+) at exact corner point and 1-5315 for cor. No. 1; from which:
 A fir, 15 ins. diam., bears N20°30'W, 9.6 ft. dist., marked BT 1-5315.
 A spruce, 12 ins. diam., bears S38°30'W, 25.3 ft. dist., marked BT 1-5315.

SUBSEQUENT RECORD: None found.

EVIDENCE FOUND: Found 2'x2'x3' flat rock ledge with no visible markings, the top of the ledge is crumbling; also found two old chisels and a shovel laying on or against this rock formation. Found stump holes at record bearings and distances.

PERPETUATION: I chisel an "X" in the top of this stone and set a steel fence post nearby. From which:
 RM - I placed a BT tag over a blaze on an alpine fir, 8 ins. diam., bears N57°W, 15.0' dist.
 RM - I placed a BT tag over a blaze on an alpine fir, 7 ins. diam., bears S75°W, 7.5' dist.

Date of Survey: August 2002 Decl. = 17°E



(Not to Scale)
SKETCH OF CORNER

CERTIFICATION

I, Kurt A. Luebke (13237LS) certify the information shown herein is correct.

Kurt A. Luebke
 Signature Ground Agency Chief

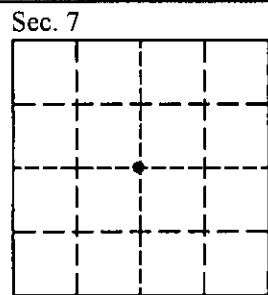
I, Glenn R. Howard certify that this Corner Record correctly represents the corner formed by me or under my direction in compliance with the "Corner Recordation Act" (70-22-101, et seq.)

Glenn R. Howard
 Signature of Surveyor & Ground Agency Chief

DATE: December, 2002 Reg. No. 8376 S

Employer: DJ&A P. C.

Office of Clerk and Recorder, County of Lincoln . This "corner record" was filed for record on 10th December 2002 was noted on the cross index plat and is assigned page No. 10574, in book No. Cross M. Cummins by RB County Official



Cross Index No. G-3 T. 28N R. 31W PMM