

INSTRUCTIONS

1. Original subsequent record used to evaluate the corner position.
2. Description of evidence found, note discrepancies in the record, state method of establishing lost or obliterated corners.
3. Description of monument and accessories set to perpetuate the corner position.
4. Sketch of corner, show all pertinent data which can best be shown in a sketch example, corner marking, topography ties, position of accessories, etc.
5. Certification must be signed and sealed by Land Surveyor registered in the State of Montana.
6. Fill in Cross Index & Section Diagram at bottom of sheet.

CERTIFIED CORNER RECORDATION

Corner U.S. Location Monument 5315 T. 28N R. 31W P.M.M. Lincoln County

ORIGINAL RECORD: (1898 G.L.O.) Set a slate stone 18x12x8 ins. 13 ins. in the ground for closing cor. of secs. 17 & 18, marked CC on S., FIR on N, with 5 grooves on E. face; from which:
 A tamarack, 12 ins. diam., bears S72°E, 20 lks. dist., marked T16N R20W S17 BT
 A tamarack, 24 ins. diam., bears S15°W, 80 lks. dist., marked T16N R20W S18 BT

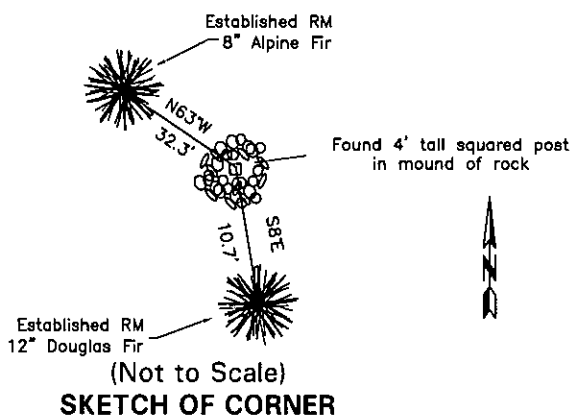
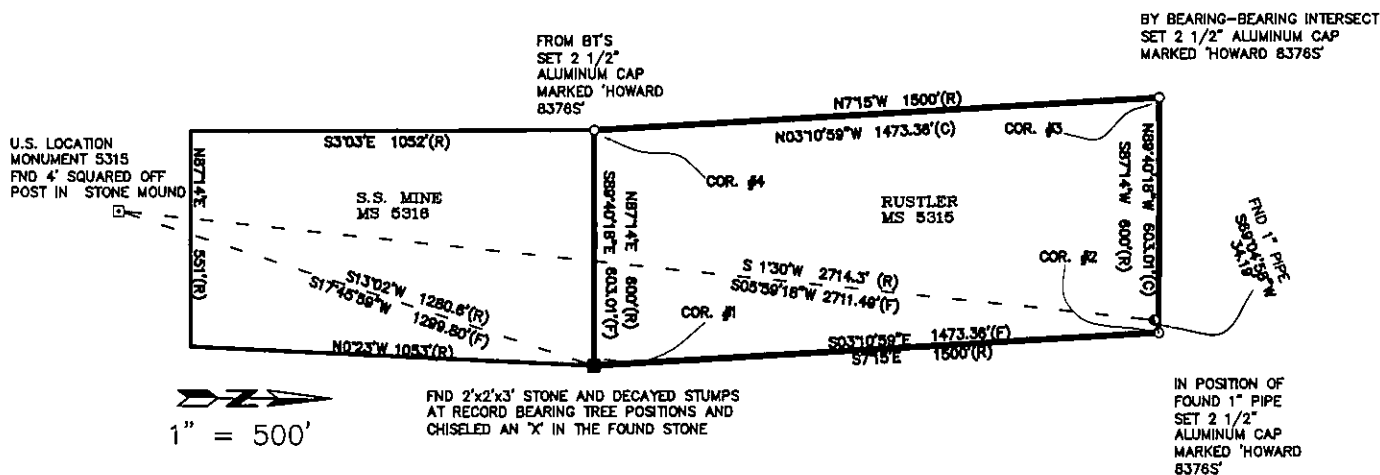
SUBSEQUENT RECORD: None found.

EVIDENCE FOUND: I find a 4' tall squared post in a mound of rock, a 1975 US Forest Service location tag is laying in the mound, and a fir with a US Forest Service survey corner tag is S8°E, 10.7' distant.

PERPETUATION: I leave the post as I found it, restack rock mound, and paint 6" red band around BT's. From which:
 RM - I placed a BT tag over a blaze on a alpine fir, 8 ins. diam., bears N63°W, 32.3' dist.
 RM - I placed a BT tag over a blaze on a douglas fir, 12 ins. diam., bears S8°E, 10.7' dist.

Date of Survey: August 2002

Decl. = 17°E



CERTIFICATION
I, Kurt A. Luebke (13237LS)

certify the information shown herein is true

Kurt A. Luebke
Signature Ground Party Chief

I, Glenn R. Howard

certify that this Corner Record correctly represents work performed by me or under my direction in accordance with the Montana Corner Recordation Act" (70-22-101, et seq., M.C.A.)

Glenn R. Howard
Signature of Surveyor

Date: December, 2002

Reg. No. 8376 S

Employer: DJ&A P. C.

Office of Clerk and Recorder, County of Lincoln . This "corner

record" was filed for record on 16th December 2002

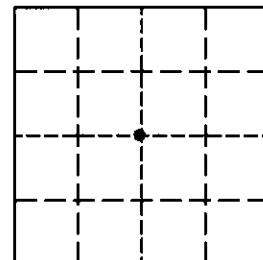
was noted on the cross index plat and is assigned page No. 10573 , in

book No. _____

Coral M. Cummins By RB
County Official

Cross Index No. G-3 T. 28N R. 31W PMM

Sec. 7



• - corner this sheet