

## INSTRUCTIONS

1. Original and subsequent record used to evaluate the corner position.
2. Description of evidence found, note discrepancies in the record, state method of establishing lost or obliterated corners.
3. Description of monument and accessories set to perpetuate the corner position.
4. Sketch of corner, show all pertinent data which can best be shown in a sketch example, corner marking, topography ties, position of accessories, etc.
5. Certification must be signed and sealed by Land Surveyor registered in the State of Montana.
6. Fill in Cross Index & Section Diagram at bottom of sheet.

## CERTIFIED CORNER RECORDATION

Corner M.S. 5315-4 (Rustler) T. 28N R. 31W P.M.M. Lincoln County

ORIGINAL RECORD: (1898 G.L.O.) Set a spruce post 4" square, 6 ft. long, 2 ft. in ground, scribed 4-5315; from which:  
 A balsam, 12 ins. diam., bears S32°55'W, 15.1 ft. dist., marked BT 4-5315.  
 A spruce, 15 ins. diam., bears S8°50'W, 20.2 ft. dist., marked BT 4-5315.  
 A spruce, 20 ins. diam., bears S85°E, 2.2 ft. dist., marked BT 4-5315.

SUBSEQUENT RECORD: None found.

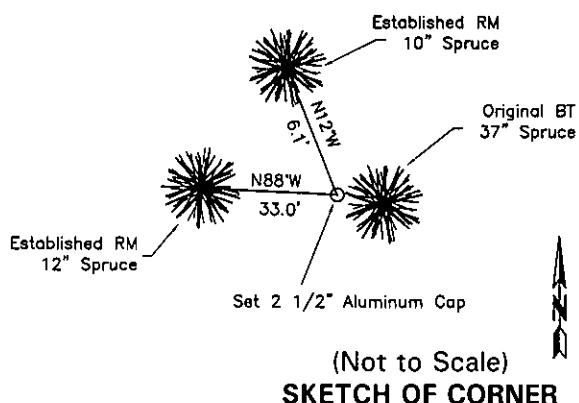
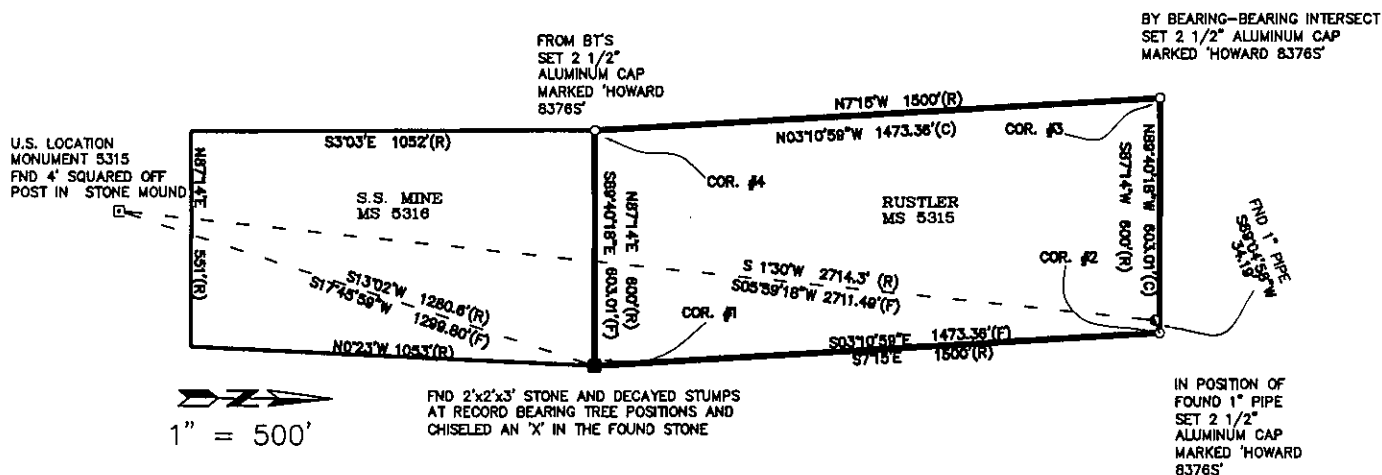
EVIDENCE FOUND: Found a 37" spruce and the remains of the 2 SW BT trees.

PERPETUATION: At the position being N85°W and alongside of the 37" spruce I set a 2 1/2" Aluminum cap on 5/8"x30" rebar marked as shown in the sketch below, and drove a steel post alongside. This corner would fall inside of the spruce due to the growth of this tree. This position fits well with record ties to corner 1-5315 and location corner 5315.  
 From which:  
 RM - I placed a BT tag over a blaze on a spruce, 10 ins. diam., bears N12°W, 6.1' dist.  
 RM - I placed a BT tag over a blaze on a spruce, 12 ins. diam., bears N88°W, 33.0' dist.

This corner falls on a steep SE facing slope.

Date of Survey: August 2002

Decl. = 17°E



CERTIFICATION  
 I, Kurt A. Luebke (13237LS)

certify the information shown herein is true and correct.

Signature of Ground Party Chief

I, Glenn R. Howard

certify that this Corner Record correctly represents the work performed by me or under my direction in compliance with the Montana Corner Recordation Act" (70-22-101, Montana M.C.A.)

Signature of Surveyor

Date: December, 2002

Reg. No. 8376 S

Employer: DJ&A P.C.

Office of Clerk and Recorder, County of Lincoln This "corner

record" was filed for record on 10<sup>th</sup> December 2002

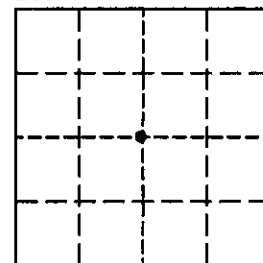
was noted on the cross index plat and is assigned page No. 10572, in

book No.                     

County Official Carol M. Cunningham

Cross Index No. G-3 T. 28N R. 31W PMM

Sec. 7



• - corner this sheet