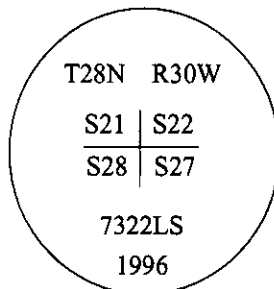


# CERTIFIED CORNER RECORDATION

Corner NW Sec. 27 T. 28N R. 30W P.M., MT Lincoln County

- I. 1900 G.L.O. original record by Burton S. Adams: Set a limestone, 16x7x5 ins., 11 ins. in the ground, for corner of sections 21, 22, 27, and 28, marked with 2 notches on South and 3 notches on East edges, from which:  
A tamarack, 20 ins. diam., bears N44°30'E, 29 lks. dist., scribed "T28N R30W S22 BT".  
A fir, 9 ins. diam., bears S14°30'E, 18 lks. dist., scribed "T28N R30W S27 BT".  
A fir, 10 ins. diam., bears S11°15'W 11 lks. dist., scribed "T28N R30W S28 BT".  
A tamarack, 5 ins. diam., bears N22°W, 48 lks. dist., scribed "T28N R30W S21 BT".
- II. Found a stone, 6x5 ins., 6 ins. above ground, firmly set, with 2 notches on South and 3 notches on East faces, from which:  
A fir, 25 ins. diam., bears S14°E, 11.9 ft. (18 lks.) dist., with healed face (scribing found when face opened).  
A larch stump, 20 ins. diam., bears N22°W, 31.7 ft. (48 lks.) dist., with no visible scribing.  
No evidence of other bearing trees found, due to past logging activity.
- III. At the position of found stone, set a 2 1/2 ins. diam. x 30 ins. long aluminum pipe, with a 3 1/4 ins. diam. aluminum cap, 6 ins. above ground, marked:



Established four new bearing trees:

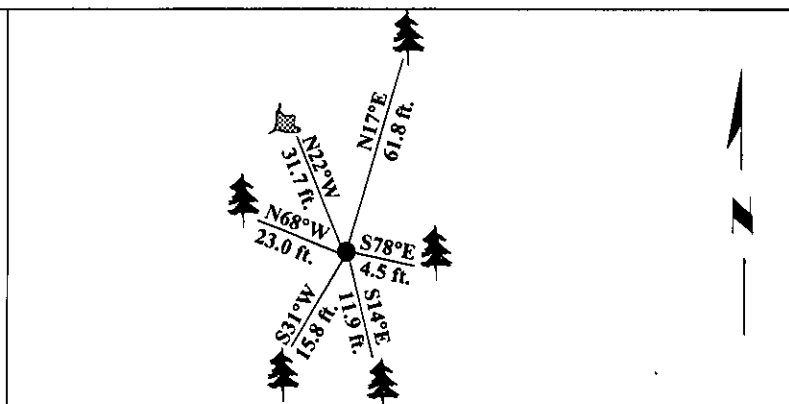
- A larch, 15 ins. diam., bears N17°E, 61.8 ft. dist., scribed "T28N R30W S22 BT".
- A fir, 8 ins. diam., bears S78°E, 4.5 ft. dist., scribed "T28N R30W S27 BT".
- A fir, 12 ins. diam., bears S31°W, 15.8 ft. dist., scribed "T28N R30W S28 BT".
- A fir, 8 ins. diam., bears N68°W, 23.0 ft. dist., scribed "T28N R30W S21BT".

Buried the original stone alongside aluminum pipe.

Set a 6 ft. steel guard post, North, 3.0 ft. dist., with a Land Survey Monument decal.

Painted bearing trees and attached Land Survey Monument and Bearing Tree signs.

Magnetic Declination: 20° East



SKETCH OF CORNER

CERTIFICATION	
I, <u>Rex O. Rice</u>	
certify the information shown herein is true and correct.	
<u>Rex O. Rice</u>	
I, <u>Alvah F. Hughes</u>	
certify that this Corner Record correctly represents work performed by me or under my direction in compliance with the "Corner Recordation Act" (70-22-101, et seq., M.C.A.).	
<u>Alvah F. Hughes</u>	
Signature of Surveyor & Seal	
Date: <u>11/26/96</u>	
Reg. No.: <u>7322LS</u>	
Employer: <u>U.S. FOREST SERVICE</u>	

Office of Clerk and Recorder, County of LINCOLN. This "corner record" was filed for record on FEB 3, 1997 and was noted on the cross-index plat and is assigned page No. 9134, in book No. \_\_\_\_\_.

CORAL M. CUMMINGS  
County Official

Sec. 27


• - corner this sheet