

## INSTRUCTIONS

1. Original and/or subsequent record used to evaluate the corner position.
2. Description of evidence found, note discrepancies in the record, state method of establishing lost or obliterated corners.
3. Description of monument and accessories set to perpetuate the corner position.
4. Sketch of corner, show all pertinent data which can best be shown in a sketch example, corner marking, topography ties, position of accessories, etc.
5. Certification must be signed and sealed by Land Surveyor registered in the State of Montana.
6. Fill in Cross Index & Section Diagram at bottom of sheet.

## CERTIFIED CORNER RECORDATION

Corner W 1/4 cor. Sec. 16 T. 28 N. R. 30 W. P.M.M. Lincoln County

- I. 1900 original G.L.O. record by Burton S. Adams: The point for 1/4 sec. cor. falls on a limestone rock in place, 18 x 4 ins., 4 ins. above ground, on which I cut a cross (X) at exact point for 1/4 sec. cor., marked 1/4 W. of cross, from which:

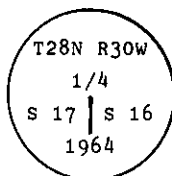
A fir, 6 ins. diam., bears S  $35^{\circ}30'$  W, 16 lks. dist., marked 1/4 S 17 BT.

A fir, 8 ins. diam., bears S  $72^{\circ}30'$  E, 14 lks. dist., marked 1/4 S 16 BT.

1964 B.L.M. Remonumentation by R. L. Larimer: The 1/4 sec. cor. of secs. 16 and 17, monumented with a shale stone, 16 x 12 x 2 ins., loosely set and mkd. 1/4 on the top face, and witnessed by the remains of the original bearing trees.

At the corner point

Set an iron post, 30 ins. long, 2 1/2 ins. diam., 10 ins. in the ground, to bedrock, and in a mound of stone, 5 ft. diam., to top, with brass cap marked:



from which

The remains of the original bearing trees:

A stump, 8 ins. diam., bears S  $72^{\circ}1/2'$  E, 14 lks. dist. (Record)

A stump, 7 ins. diam., bears S  $35^{\circ}1/2'$  W, 16 lks. dist. (Record)

The new bearing trees:

A fir, 12 ins. diam., bears N  $67^{\circ}$  E, 87 lks. dist., marked 1/4 S 16 BT.

A fir, 16 ins. diam., bears N  $82^{\circ}$  W, 30 lks. dist., marked 1/4 S 17 BT.

Bury the original stone alongside of the iron post.

- II. Found a 2 1/2 in. diam. iron pipe, 14 ins. above ground, loosely set in place, with a 3 1/4 in diam. BLM brass cap mkd. as shown above, from which:

A fir, 18 ins. diam., bears N  $82^{\circ}$  W, 19.8 ft. (30 lks.) dist., healed face.

A fir, 17 ins. diam., bears N  $67^{\circ}$  E, 57.4 ft. (87 lks.) dist., with 4 S 16 BT visible.

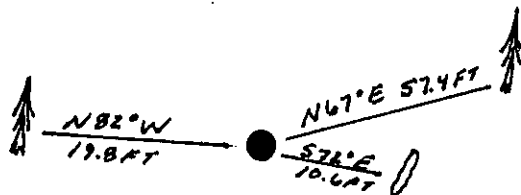
Rotten remains, bears S  $72^{\circ}$  E, 10.6 ft. (16 lks.) dist., with visible scribe marks.

- III. Rebuilt the rock collar around the monument.

Painted a red band around the bearing trees and attached Land Survey Monument and Bearing Tree signs.

No guard post established.

Magnetic Declination:  $20^{\circ}$  East.



SKETCH OF CORNER

## CERTIFICATION

I, Thomas M. Hommel  
certify the information shown herein is true and correct.

Thomas M. Hommel  
Signature Ground Party Chief

I, Alvah F. Hughes  
certify that this Corner Record correctly represents work performed by me or under my direction in compliance with the "Corner Recordation Act" (70-22-101, et seq., M.C.A.)

Alvah F. Hughes  
Signature of Surveyor & Seal

Date: 12/20/93 Reg. No. 7322LS

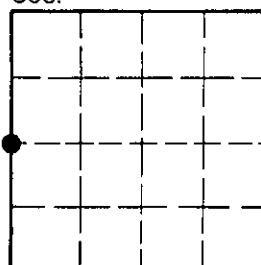
Employer: U.S. FOREST SERVICE

Office of Clerk and Recorder, County of Lincoln. This "corner record" was filed for record on Jan 12, 1994 was noted on the cross-index plat and is assigned page No. 6089, in book No. Coral M. Cumming By RB

County Official

Cross Index No. L-09 T. 28 N R. 30 W PMM

Sec. 16



• - corner this sheet