

## INSTRUCTIONS

1. Original and/or subsequent record used to evaluate the corner position.
2. Description of evidence found, note discrepancies in the record, state method of establishing lost or obliterated corners.
3. Description of monument and accessories set to perpetuate the corner position.
4. Sketch of corner, show all pertinent data which can best be shown in a sketch example, corner marking, topography ties, position of accessories, etc.
5. Certification must be signed and sealed by Land Surveyor registered in the State of Montana.
6. Fill in Cross Index & Section Diagram at bottom of sheet.

## CERTIFIED CORNER RECORDATION

Corner E 1/4 cor. Sec. 16 T. 28 N. R. 30 W. P.M.M. Lincoln County

- I. 1900 original G.L.O. record by Burton S. Adams: Set a limestone, 20 x 8 x 4 ins., 15 ins in the ground for the 1/4 sec. cor., marked 1/4 on W. face, from which:

A pine, 16 ins. diam., bears S 66° 15' E, marked 1/4 S 15 BT.

A pine, 28 ins. diam., bears N 60° W, 3 lks. dist., marked 1/4 S 16 BT.

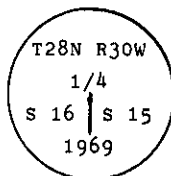
1969 B.L.M. Remonumentation by R. L. Leedy: The 1/4 sec. cor. of secs. 15 and 16, monumented with a limestone, 20 x 8 x 4 ins., firmly set, dimly marked 1/4 on the W. face, and witnessed by the remains of the original bearing trees:

A pine snag, 16 ins. diam., bears S 66 1/4° E, 30 lks. dist., marked 1/4 S 15 BT. (No dist. given in original record.)

A pine, 29 ins. diam., bears N 60° W, 63 lks. dist., marked 1/4 16 BT. (Record: 3 lks. dist.)

At the corner point

Set an iron post, 30 ins. long, 2 1/2 ins. diam., 24 ins. in the ground, with brass cap marked:



from which

A fir, 5 ins. diam., bears N 89° E, 27 lks. dist., marked 1/4 S 15 BT.

Bury the original stone alongside and raise a collar of stone, 2 ft. diam., around the iron post.

- II. Found a 2 1/2 in. diam. iron pipe, 3 ins. above ground, firmly set in place, with a 3 1/4 in diam. BLM brass cap mkd. as shown above, from which:

A pine snag, 15 ins. diam., bears S 66° E, 20.2 ft. (30.6 lks.) dist., marked. 1/4 S 15 BT. (No distance given in the original record.)

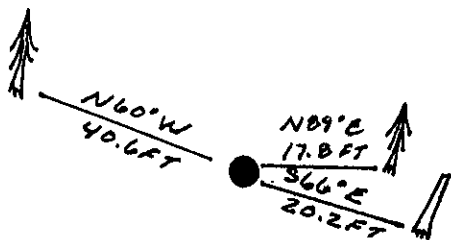
A pine, 30 ins. diam., bears N 60° W, 40.6 ft. (61.5 lks.) dist., marked 1/4 S 16 BT. (Record 3 lks.)

A fir, 9 ins. diam., bears N 89° E, 17.8 ft. (27 lks.) dist., with BT visible.

- III. Painted a red band around the bearing trees and attached Land Survey Monument and Bearing Tree signs.

No guard post established.

Magnetic Declination: 20° East.



SKETCH OF CORNER

## CERTIFICATION

Thomas M. Hommel

I, \_\_\_\_\_  
certify the information shown herein is true and correct.

*Thomas M. Hommel*  
Signature Ground Party Chief

Alvah F. Hughes

I, \_\_\_\_\_  
certify that this Corner Record correctly represents work performed by me or under my direction in compliance with the "Corner Recordation Act" (70-22-101, et seq., M.C.A.)

*Alvah F. Hughes*  
Signature of Surveyor & Seal

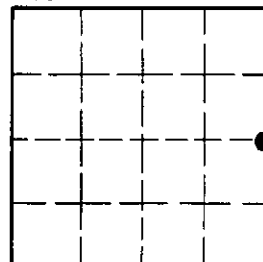
Date: 12/20/93 Reg. No. 73221S

Employer: U.S. FOREST SERVICE

Office of Clerk and Recorder, County of Lincoln. This "corner record" was filed for record on Jan 12, 1994 was noted on the cross-index plat and is assigned page No. 6088, in book No. \_\_\_\_\_

*Coral M. Cummings*  
County Official

Sec. 16



• - corner this sheet

Cross Index No. L-13 T. 28 N R. 30 W PMM