

## INSTRUCTIONS

1. Original and/or subsequent record used to evaluate the corner position.
2. Description of evidence found, note discrepancies in the record, state method of establishing lost or obliterated corners.
3. Description of monument and accessories set to perpetuate the corner position.
4. Sketch of corner, show all pertinent data which can best be shown in a sketch example, corner marking, topography ties, position of accessories, etc.
5. Certification must be signed and sealed by Land Surveyor registered in the State of Montana.
6. Fill in Cross Index & Section Diagram at bottom of sheet.

## CERTIFIED CORNER RECORDATION

Corner W 1/4 cor. Sec. 13 T. 28 N. R. 30 W. P.M.M. Lincoln County

- I. 1900 original G.L.O. record by Burton S. Adams: Set a limestone, 14 x 12 x 6 ins., 9 ins. in the ground for the 1/4 sec. cor., marked 1/4 on W. face, from which:

A pine, 18 ins. diam., bears N 40° E, 113 lks. dist., marked 1/4 S 13 BT.

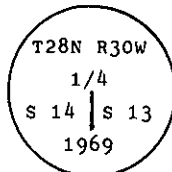
A pine, 16 ins. diam., bears S 73° 45' W, 55 lks. dist., marked 1/4 S 14 BT.

1966 B.L.M. Remonumentation by R. L. Leedy: The 1/4 sec. cor. of secs. 13 and 14, monumented with a limestone, 14 x 12 x 6 ins., firmly set, marked 1/4 on the W. face, and witnessed by the remains of one of the original bearing trees:

A stump, bears N 40° E, 43 lks. dist., marked 1/4 S 13 BT. (Record: 113 lks.)

At the corner point

Set an iron post, 30 ins. long, 2 1/2 ins. diam., 24 ins. in the ground, with brass cap marked:



from which

A fir, 8 ins. diam., bears S 71° E, 6 lks. dist., marked 1/4 S 13 BT.

A fir, 6 ins. diam., bears S 23 3/4° W, 55 lks. dist., marked 1/4 S 14 BT.

Bury the original stone alongside the iron post.

- II. Found a 2 1/2 in. diam. iron pipe, 8 ins. above ground, firmly set in place, with a 3 1/4 in diam. BLM brass cap mkd. as shown above, from which:

A fir, 10 ins. diam., bears S 71° E, 4.0 ft. (6.0 lks.) dist., healed face.

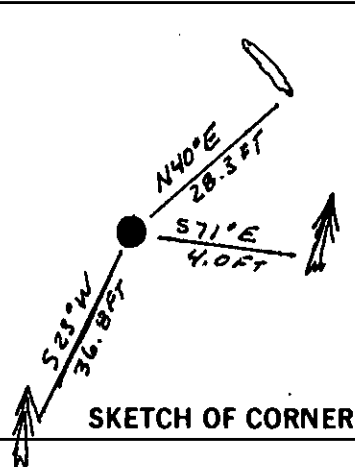
A fir, 12 ins. diam., bears S 23° W, 36.8 ft. (55.7 lks.) dist., healed face.

Rotten remains of a pine, bears N 40° E, 28.3 ft. (43 lks.) dist., with 1/4 S 13 visible. (Record 113 lks.)

- III. Painted a red band around the bearing trees and attached Land Survey Monument and Bearing Tree signs.

No guard post established.

Magnetic Declination: 20° East.



SKETCH OF CORNER

## CERTIFICATION

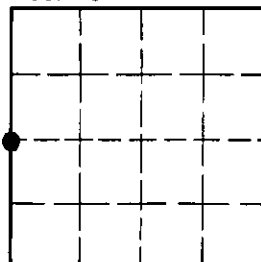
I, Thomas M. Hommel  
certify the information shown herein is true and correct.  
Thomas M. Hommel  
Signature Ground Party Chief

I, Alvah F. Hughes  
certify that this Corner Record correctly represents work performed by me or under my direction in compliance with the "Corner Recordation Act" (70-22-101, et seq., M.C.A.).  
Alvah F. Hughes  
Signature of Surveyor & Seal

Date: 12/20/93 Reg. No. 7322LS  
Employer: U.S. FOREST SERVICE

Office of Clerk and Recorder, County of Lincoln. This "corner record" was filed for record on Jan 12, 1994 was noted on the cross-index plat and is assigned page No. 6086, in book No. Coral M. Cummings, B.O.B. County Official

Sec. 13



• - corner this sheet

Cross Index No. L-21 T. 28 N. R. 30 W. PMM