

INSTRUCTIONS

1. Original and/or subsequent record used to evaluate the corner position.
2. Description of evidence found, note discrepancies in the record, state method of establishing lost or obliterated corners.
3. Description of monument and accessories set to perpetuate the corner position.
4. Sketch of corner, show all pertinent data which can best be shown in a sketch example, corner marking, topography ties, position of accessories, etc.
5. Certification must be signed and sealed by Land Surveyor registered in the State of Montana.
6. Fill in Cross Index & Section Diagram at bottom of sheet.

CERTIFIED CORNER RECORDATION

Corner SW sec.cor. Sec. 13 T. 28 N. R. 30 W. P.M.M. Lincoln County

- I. 1900 original G.L.O. record by Burton S. Adams: Set a limestone, 16 X 10 X 5 ins. 11 ins. in the ground, and four bearing trees.

1964 B.L.M. Remonumentation by R. L. Larimer: The cor. of secs. 13, 14, 23 and 24, monumented with a limestone, 16 X 10 X 6 ins., firmly set, mkd. 1 notch on the E. and 3 notches on the S. edges, and witnessed by the remains of the original bearing trees:

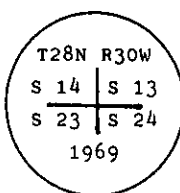
A stump, bears N 47° E, 47 lks. dist., mkd. R30W S 13 BT.

A stump, bears S $74 \frac{3}{4}^{\circ}$ E, 50 lks. dist., mkd. R30W S 24.

A stump, bears S 10° W, 74 lks. dist., with fallen log, with illegible mks., lying alongside.

At the corner point

Set an iron post, 30 ins. long, 2 1/2 ins. diam., 24 ins. in the ground, with brass cap mkd.



from which

A fir, 14 ins. diam., bears N $88 \frac{1}{4}^{\circ}$ E, 103 lks. dist., mkd. T28N R30W S 13 BT.

A larch, 14 ins. diam., bears S 8° W, 11 lks. dist., mkd. T28N R30W S 23 BT.

A larch, 9 ins. diam., bears N $57 \frac{3}{4}^{\circ}$ W, 11 lks. dist., mkd. T28N R30W S 14 BT.

Bury the original stone alongside of the iron post.

- II. Found a 2 1/2 in. diam. iron pipe, 4 ins. above ground, firmly set, with a 3 1/4 in diam. BLM brass cap mkd. as shown above, from which:

A pine stump, 14 ins. diam., bears N 47° E, 30.4 ft. (46 lks.) dist., mkd. T28N R30W S 3 BT.

A pine stump, 20 ins. diam., bears S 75° E, 33.0 ft. (50 lks.) dist., with visible scribe marks.

A down fir, 21 ins. diam., bears S 10° W, 48.9 ft. (74 lks.) dist., with R BT visible.

A fir, 19 ins. diam., bears N 88° E, 68.0 ft. (103 lks.) dist., with 28N R30W S B visible.

A larch, 18 ins. diam., bears S 8° W, 7.6 ft. (11.5 lks.) dist., healed face.

A larch, 12 ins. diam., bears N 58° W, 7.6 ft. (11.5 lks.) dist., healed face.

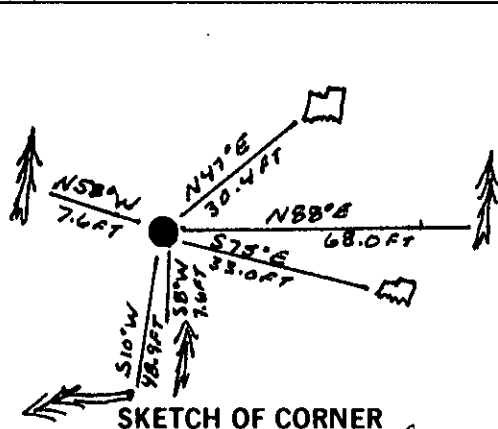
- III Established one new bearing tree:

A fir, 8 ins. diam., bears S 8° E, 34.5 ft. dist., mkd. T28N R30W S 24 BT.

Painted a red band around the bearing trees and attached Land Survey Monument and Bearing Tree signs.

No guard post established.

Magnetic Declination: 20° East.



CERTIFICATION

I. Thomas M. Hommel

certify the information shown herein is true and correct.

Thomas M. Hommel
Signature Ground Party Chief

I. Alvah F. Hughes

certify that this Corner Record correctly represents work performed by me or under my direction in compliance with the "Corner Recordation Act" (70-22-101, et seq. M.C.A.)

Alvah F. Hughes
Signature of Surveyor & Seal

Date: 12/21/93 Reg. No. 7322LS

Employer: U.S. FOREST SERVICE

Office of Clerk and Recorder, County of Lincoln. This "corner

record" was filed for record on Jan 12, 1994

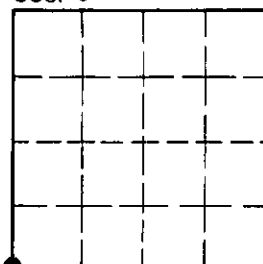
was noted on the cross-index plat and is assigned page No. 6085, in

book No. Coral M. Cumming & Co

County Official

Cross Index No. N-21 T. 28 N R. 30 W P.M.M.

Sec.13



• - corner this sheet