

INSTRUCTIONS

1. Original and/or subsequent record used to evaluate the corner position.
2. Description of evidence found, note discrepancies in the record, state method of establishing lost or obliterated corners.
3. Description of monument and accessories set to perpetuate the corner position.
4. Sketch of corner, show all pertinent data which can best be shown in a sketch example, corner marking, topography ties, position of accessories, etc.
5. Certification must be signed and sealed by Land Surveyor registered in the State of Montana.
6. Fill in Cross Index & Section Diagram at bottom of sheet.

CERTIFIED CORNER RECORDATION

Corner SW sec.cor. Sec. 26 T. 28 N. R. 30 W. P.M.M. Lincoln County

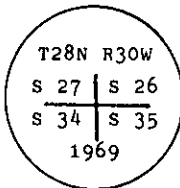
I. 1900 original G.L.O. record by Burton S. Adams: Set a fir post, 3 ft. long, 4 ins. square, 24 ins. in the ground and two bearing trees.

1969 B.L.M. Remonumentation by R. G. Leedy: The cor. of secs. 26, 27, 34 and 35, as determined by the remains of the original bearing trees:

- A stumphole, bears N 33 1/2° E, 157 lks. dist.
- A fir, 36 ins. diam., bears S 34° E, 132 lks. dist., mkd. T28N.

At the corner point

Set an iron post, 30 ins. long, 2 1/2 ins. diam., flush with the surface of the ground, with brass cap mkd.



from which

- A fir, 14 ins. diam., bears N 41° E, 87 lks. dist., mkd. T28N R30W S 26 BT.
- A fir, 8 ins. diam., bears S 52° E, 67 lks. dist., mkd. T28N R30W S 35 BT.

This corner is situated on the E. edge of a hay meadow.

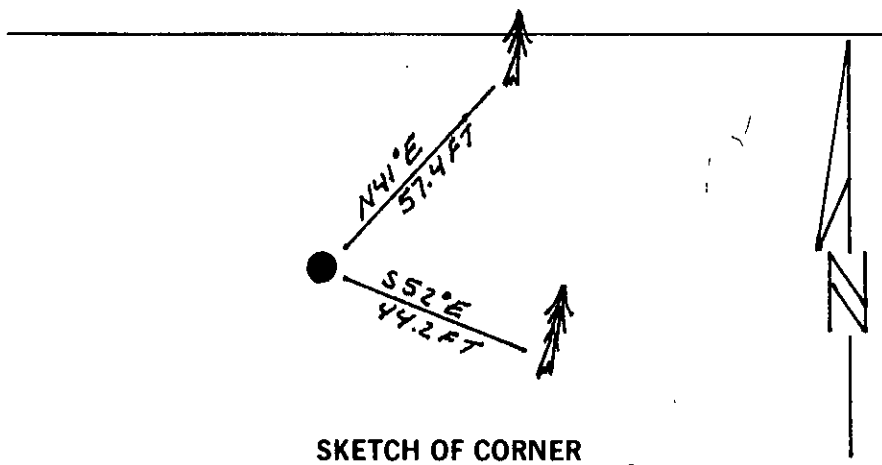
II. Found a 3 1/4 diam. BLM brass cap, 4 ins. below ground, firmly set, mkd. as shown above, from which:

- A fir, 24 ins. diam., bears N 41° E, 57.4 ft. (87 lks.) dist., healed face.
- A fir, 17 ins. diam., bears S 52° E, 44.2 ft. (67 lks.) dist., with N R30W S 35 BT visible.

III. Painted a red band around the bearing trees and attached Land Survey Monument and Bearing Tree signs.

No guard post established.

Magnetic Declination: 20° East.



SKETCH OF CORNER

CERTIFICATION

I. Thomas M. Hommel
 certify the information shown herein is true and correct
Thomas M. Hommel
 Signature Ground Party Chief

II. Alvah F. Hughes
 certify that this Corner Record correctly represents work performed by me or under my direction in compliance with the "Corner Recordation Act" (70-22-101, et seq., M.C.A.)
Alvah F. Hughes
 Signature of Surveyor & Seal

Date: 12/21/93 Reg. No. 732216
 Employer: U.S. FOREST SERVICE

Office of Clerk and Recorder, County of Lincoln. This "corner record" was filed for record on Jan 12, 1994 was noted on the cross-index plat and is assigned page No. 6084, in book No. _____

Coral M. Cummings
 County Official

Sec. 26

Cross Index No. V-17 T. 28 N R. 30 W PMM

• - corner this sheet