

INSTRUCTIONS

1. Original and/or subsequent record used to evaluate the corner position.
2. Description of evidence found, not discrepancies in the record, state method of establishing lost or obliterated corners.
3. Description of monument and accessories set to perpetuate the corner position.
4. Sketch of corner, show all pertinent data which can best be shown in a sketch example, corner marking, topography ties, position of accessories, etc.
5. Certification must be signed and sealed by Land Surveyor registered in the State of Montana.
6. Fill in Cross Index & Section Diagram at bottom of sheet.

CERTIFIED CORNER RECORDATION

Corner NW1/16 S10 T. 28N R. 30W P.M.M. Lincoln County

RECORD:

5/8" rebar and plastic cap per COS 1397

FOUND:

5/8" rebar and plastic cap

PERPETUATION:

The corner did not meet positional tolerance specifications. A retracement of the Section Subdivision by Ninneman in 1971, notes a large discrepancy in the location of the East $\frac{1}{4}$ corner and conflicting distances between the West $\frac{1}{4}$ corner and Northwest Section Corner. The corner was not accepted and a new monument was set this survey.

The new corner position was established as a result of a subdivisional survey of Section 10. Said subdivisional survey was made in accordance with methods and procedures contained in the Manual of Surveying Instructions; U.S. Bureau of Land Management.

Set a standard Forest Service $3\frac{1}{2}$ " aluminum cap stamped as shown below, aluminum shaft 26" in the ground with a mound of stone, from which:

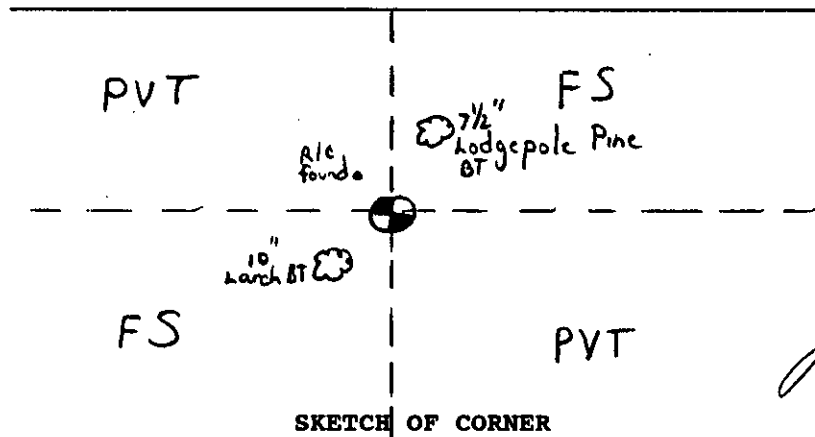
A 10" larch bears S57°W, 15.2 dist., scribed NW1/16 S10 BT and

A $7\frac{1}{2}$ " lodge pole pine BT bears N18°E, 12.9 dist., scribed NW1/16 S10 BT

A 6' steel post with Land Survey Monument decal attached was placed 3.6 feet west of monument.

Trees were signed and blazes and scribing were painted red.

T28N R30W
NW1/16
S10
PLS 9958
1993



CERTIFICATION

I, John Marquette

certify the information shown herein is true and correct.

John Marquette
Signature Ground Party Chief

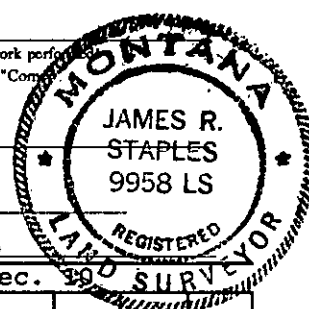
I, JAMES R. STAPLES

certify that this corner Record correctly represents work performed by me or under my direction in compliance with the "Corner Recordation Act" (70-22-101, et seq., M.C.A.)

James R. Staples
Signature of Surveyor & Seal

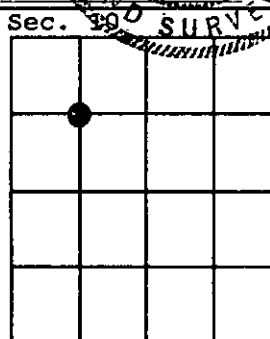
Date: 12-20-93 Reg. No. 9958LS

Employer: T.R.S. SURVEYING INC.



Office of Clerk and Recorder, County of LINCOLN. This "corner record" was filed for record on 12-23-93 was noted on the cross-index plat and is assigned page No. 6063 in book No. _____

Coral M. Cummings by E.B.
County Official



Cross Index No. EE-9 T. 28N R. 30W PMM