

INSTRUCTIONS

1. Original and/or subsequent record used to evaluate the corner position.
2. Description of evidence found, note discrepancies in the record, state method of establishing lost or obliterated corners.
3. Description of monument and accessories set to perpetuate the corner position.
4. Sketch of corner, show all pertinent data which can best be shown in a sketch example, corner marking, topography ties, position of accessories, etc.
5. Certification must be signed and sealed by Land Surveyor registered in the State of Montana.
6. Fill in Cross Index & Section Diagram at bottom of sheet.

CERTIFIED CORNER RECORDATION

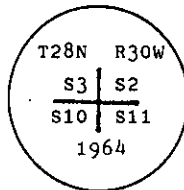
Corner NE Sec. Cor S10 T. 28 N. R. 30 W. P.M.M. Lincoln County

- I. 1900 G.L.O. record by Burton S. Adams: Set a slate stone, 18x10x4, 12 ins. in the ground, and four bearing trees.

1964 BLM Remonumentation by R. L. Larimer & H. W. Grusing: The cor. of secs. 2, 3, 10 & 11, monumented with a slate stone, 18x10x4 ins., firmly set and mkd. with 2 grooves on the E., and 5 grooves on the S faces, and witnessed by the remains of two of the original bearing trees.

At the corner point

Set an iron post, 30 ins. long, 2 1/2 ins. diam., 27 ins. in the ground, with brass cap mkd.



From which

The remains of the original bearing trees:

A stump, 36 ins. diam., bears N 67° E, 47 lks. dist., mkd. T28N R30W S2 BT.

A pine, 24 ins. diam., bears S 37 1/2° E, 83 lks. dist., mkd. with an overgrown blaze.

The new bearing trees:

A fir, 8 ins. diam., bears N 53° E, 61 lks. dist., mkd. T28N R30W S2 BT.

A fir, 12 ins. diam., bears S 67° W, 64 lks. dist., mkd. T28N R30W S10 BT.

A fir, 8 ins. diam., bears N 49° W, 53 lks. dist., mkd. T28N R30W S3 BT.

- II. Found a 2 1/2 in. diam. iron pipe, 10 ins. above ground, firmly set, with a 3 1/4 in diam. BLM brass cap mkd. as shown above, from which:

A pine stump, 25 ins. diam., bears N 67° E, 29.4 ft. dist. (44.5 lks.), mkd. T28N R30W S2 BT. (GLO Record: 47 lks.)

A pine, 26 ins. diam., bears S 38° E, 54.8 ft. dist. (83 lks.), mkd. with a healed face. (GLO)

A pine stump, 10 ins. diam., bears S 44° W, 101.6 ft. dist. (154 lks.), no visible marks. (GLO)

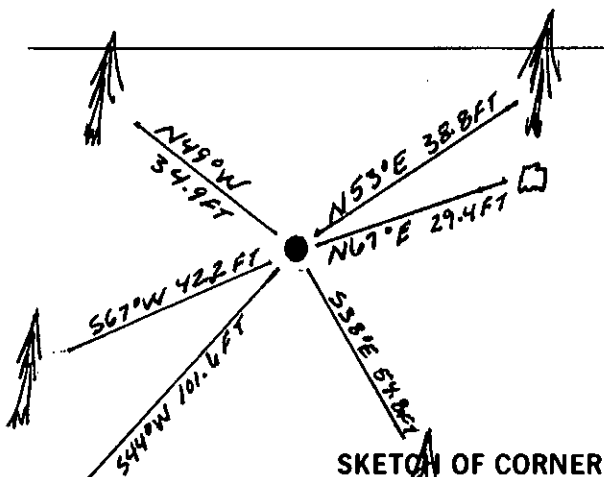
A fir, 15 ins. diam., bears N 53° E, 38.8 ft. dist. (58 lks.), mkd. with visible scribe marks. (GLO Record: 61 lks.)

A fir, 18 ins. diam., bears S 67° W, 42.2 ft. dist. (64 lks.), mkd. with a healed face. (BLM)

A fir, 13 ins diam., bears N 49° W, 34.9 ft. dist. (53 lks.), mkd. T28N R30W S3 visible. (BLM)

- III. Painted red bands around the bearing trees and attached Land Survey Monument and Bearing Tree signs.

Magnetic Declination: 20° East



CERTIFICATION

Thomas M. Hommel
certify the information shown herein is true and correct.

Thomas M. Hommel
Signature Ground Party Chief

Alvah F. Hughes
certify that this Corner Record correctly represents work performed by me or under my direction in compliance with the "Corner Recordation Act" (70-22-101, et seq., M.C.A.)

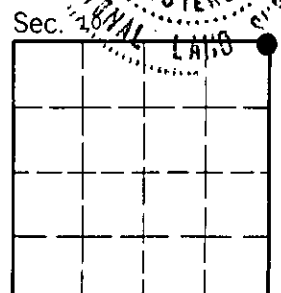
Alvah F. Hughes
Signature of Surveyor & Seal

Date: 11/19/92 Reg. No. 7322 LS

Employer: U.S. FOREST SERVICE

Office of Clerk and Recorder, County of Lincoln. This "corner record" was filed for record on Jan 11, 1993 was noted on the cross-index plat and is assigned page No. 5274, in book No. Coral M. Cummings By DB

County Official



E-17
Cross Index No. T. 28 N. R. 30 W. PMM

• - corner this sheet