

## INSTRUCTIONS

1. Original and/or subsequent record used to evaluate the corner position.
2. Description of evidence found, note discrepancies in the record, state method of establishing lost or obliterated corners.
3. Description of monument and accessories set to perpetuate the corner position.
4. Sketch of corner, show all pertinent data which can best be shown in a sketch example, corner marking, topography ties, position of accessories, etc.
5. Certification must be signed and sealed by Land Surveyor registered in the State of Montana.
6. Fill in Cross Index & Section Diagram at bottom of sheet.

## CERTIFIED CORNER RECORDATION

Corner NE Sec. Cor. S14 T. 28 N. R. 30 W. P.M.M. Lincoln County

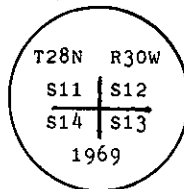
- I. 1900 G.L.O. record by Burton S. Adams: Set a limestone, 14x10x8 ins., 9 ins. in the ground, and four bearing trees.

1969 BLM Remonumentation by Roy G. Leedy: The cor. of secs. 11, 12, 13, and 14, monumented with a limestone, 14x10x8 ins., firmly set, mkd. 1 notch on the E. and 4 notches on the S. edges, and witnessed by the remains of the original bearing trees:

- A stump, bears N  $56\frac{1}{4}^{\circ}$  E, 94 lks. dist., mkd. BT.  
 A burnt stump, bears S  $44\frac{1}{2}^{\circ}$  E, 61 lks. dist., with no visible marks.  
 A stump, bears S  $57^{\circ}$  W, 53 lks. dist., mkd. T.

At the corner point

Set an iron post, 30 ins. long, 2 1/2 ins. diam., 24 ins. in the ground, with brass cap mkd.



from which

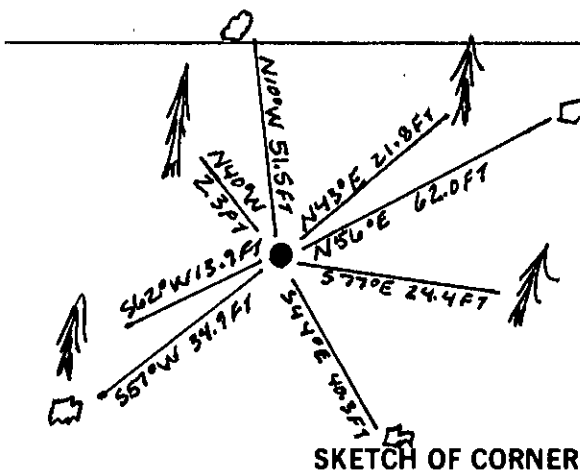
- A pine 6 ins. diam., bears N  $43^{\circ}$  E, 33 lks. dist., mkd. T28N R30W S12 BT.  
 A fir, 7 ins. diam., bears S  $77^{\circ}$  E, 37 lks. dist., mkd. T28N R30W S13 BT.  
 A fir, 7 ins. diam., bears S  $62\frac{1}{4}^{\circ}$  W, 21 lks. dist., mkd. T28N R30W S14 BT.  
 A pine, 6 ins. diam., bears N  $40\frac{1}{4}^{\circ}$  W, 3 lks. dist., mkd. T28N R30W S11 BT.

Bury the original stone alongside the iron post.

- II. Found a 2 1/2 in. diam. iron pipe, 6 ins. above ground, firmly set, with a 3 1/4 in diam. brass cap mkd as shown above, from which:

- A pine stump, 26 ins. diam., bears N  $56^{\circ}$  E, 62.0 ft. dist. (94 lks.), no visible marks. (GLO)  
 A burnt stump, bears S  $44^{\circ}$  E, 40.3 ft. dist. (61 lks.), no visible marks. (GLO)  
 A stump, 24 ins. diam., bears S  $57^{\circ}$  W, 34.9 ft. dist. (53 lks.), mkd. with a T. (GLO)  
 A root wad, bears N  $10^{\circ}$  W, 51.5 ft. dist. (78 lks.), no visible marks. (GLO)  
 A pine, 10 ins. diam., bears N  $43^{\circ}$  E, 21.8 ft. dist., (33 lks.), mkd. with visible scribe marks. (BLM)  
 A fir, 10 ins. diam, bears S  $77^{\circ}$  E, 24.4 ft. dist., (37 lks.), mkd. with visible scribe marks. (BLM)  
 A fir, 9 ins. diam, bears S  $62^{\circ}$  W, 13.9 ft. dist., (21 lks.) mkd. with a healed faces. (BLM)  
 A pine, 7 ins. diam., bears N  $40^{\circ}$  W, 2.3 ft. dist., (3 lks.) mkd. T28N R30W S11 BT. (BLM)

- III. Painted red bands around the bearing trees and attached Land Survey Monument and Bearing Tree signs.  
 Magnetic Declination:  $20^{\circ}$  East



## CERTIFICATION

Thomas M. Hommel

I, Thomas M. Hommel certify the information shown herein is true and correct.

Signature Ground Party Chief

Alvah F. Hughes

I, Alvah F. Hughes certify that this Corner Record correctly represents work performed by me or under my direction in compliance with the "Corner Recordation Act" (70-22-101, et seq., M.C.A.)

Signature of Surveyor & Seal

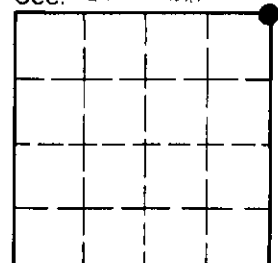
Date: 10/27/92 Reg. No. 7322

Employer: U.S. FOREST SERVICE

Office of Clerk and Recorder, County of Lincoln. This "corner record" was filed for record on Jan 11, 1993 was noted on the cross-index plat and is assigned page No. 5273, in book No. Coral M. Cummings by DB

County Official

Sec. 14



Cross Index No. J-21 T. 28 N. R. 30 W. PMM

• - corner this sheet