

INSTRUCTIONS

1. Original and/or subsequent record used to evaluate the corner position.
2. Description of evidence found, note discrepancies in the record, state method of establishing lost or obliterated corners.
3. Description of monument and accessories set to perpetuate the corner position.
4. Sketch of corner, show all pertinent data which can best be shown in a sketch example, corner marking, topography ties, position of accessories, etc.
5. Certification must be signed and sealed by Land Surveyor registered in the State of Montana.
6. Fill in Cross Index & Section Diagram at bottom of sheet.

CERTIFIED CORNER RECORDATION

Corner NE Sec. Cor. S24 T. 28 N. R. 30 W. P.M.M. Lincoln County

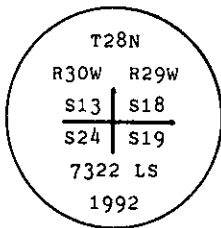
I. 1900 G.L.O. record by Burton S. Adams: Set a limestone, 14x12x5 ins., 9 ins. in the ground, for cor. of secs. 13, 18, 19, & 24, marked with 3 notches on the N. and 3 notches on the S. edges, from which:

- A fir, 16 ins. diam., bears N 65° E, 69 lks. dist., mkd T28N R29W S18 BT.
- A fir, 12 ins. diam., bears S 9° E, 179 lks. dist., mkd T28N R29W S19 BT.
- A pine, 14 ins. diam., bears S 15° 15' W, 104 lks. dist., mkd T28N R30W S24 BT.
- A fir, 14 ins. diam., bears N 54° W, 49 lks. dist., mkd T28N R30W S13 BT.

II. Found a stone, 5x12, 8 ins. above ground, loosely set in place, with 3 notches on the N. and 3 notches on the S. faces, from which:

- A fir, 24 ins. diam., bears N 65° E, 45.5 ft. dist. (69 lks.), mkd. with visible scribe marks.
- A fir stump, 13 ins. diam., bears S 9° E, 118.1 ft. dist. (179 lks.), with the rotten remains of a log laying alongside, mkd. with visible scribe marks.
- A pine stump, 18 ins. diam., bears S 15° W, 67.6 ft. dist. (102 lks.), mkd. T28N R30W S24 BT. (RECORD: 104 lks.)
- A fir, 26 ins. diam., bears N 54° W, 32.3 ft. dist. (49 lks.), mkd. with a pitched face.

III. At the position of the found stone, I set a 2 1/2 in. diam. x 30 ins. long aluminum pipe, 18 ins. in the ground, with a 3 1/4 in. diam. aluminum cap mkd. as shown. Build a rock collar around the monument.

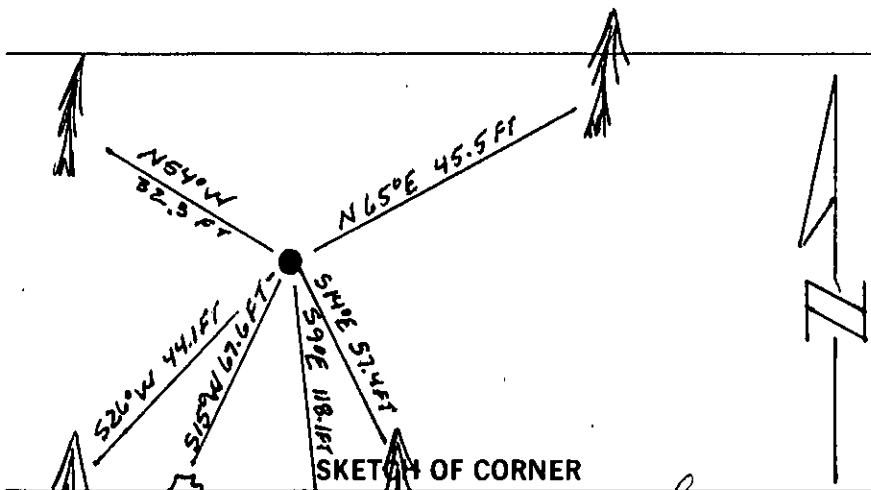


Established 2 new bearing trees:

- A fir, 9 ins. diam., bears S 14° E, 57.4 ft. dist., mkd. T28N R29W S19 BT.
- A fir, 9 ins. diam., bears S 26° W, 44.1 ft. dist., mkd. T28N R30W S24 BT.

Painted red bands around the bearing trees and attached Land Survey Monument and Bearing Tree signs.

Magnetic Declination: 20° East



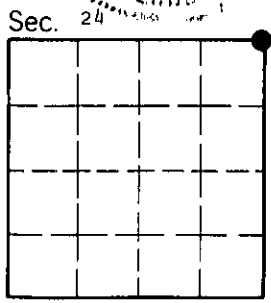
CERTIFICATION

I. Thomas M. Hommel
 certify the information shown herein is true and correct
Thomas M. Hommel
 Signature Ground Party Chief

II. Alvah F. Hughes
 certify that this Corner Record correctly represents work performed by me or under my direction in compliance with the "Corner Recordation Act" (70-22-101, et seq., M.C.A.)
Alvah F. Hughes
 Signature of Surveyor & Seal

Date: 10/28/92 Reg. No. 7322
 U.S. FOREST SERVICE
 REGISTERED

Office of Clerk and Recorder, County of Lincoln. This "corner record" was filed for record on Jan 11, 1993 was noted on the cross-index plat and is assigned page No. 5272, in book No. _____
Coral M. Cummings
 County Official



Cross Index No. N-25 T. 28 N R. 30 W P.M.M.