

## INSTRUCTIONS

1. Original and/or subsequent record used to evaluate the corner position.
2. Description of evidence found, note discrepancies in the record, state method of establishing lost or obliterated corners.
3. Description of monument and accessories set to perpetuate the corner position.
4. Sketch of corner, show all pertinent data which can best be shown in a sketch example, corner marking, topography ties, position of accessories, etc.
5. Certification must be signed and sealed by Land Surveyor registered in the State of Montana.
6. Fill in Cross Index & Section Diagram at bottom of sheet.

## CERTIFIED CORNER RECORDATION

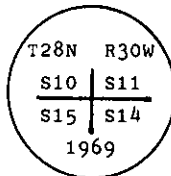
Corner NW Sec. Cor. S14 T. 28 N. R. 30 W. P.M.M. Lincoln County

- I. 1900 G.L.O. record by Burton S. Adams: Set a limestone, 12x10x8 ins., 8 ins. in the ground, and four bearing trees.

1964 BLM Remonumentation by R. L. Larimer & H. W. Grusing: The cor. of secs. 10, 11, 14, and 15, monumented with a limestone, 12x10x8 ins., loosely set and mkd. 2 grooves on the E. and 4 grooves on the S. faces, and witnessed by two of the original bearing trees:

At the corner point

Set an iron post, 30 ins. long, 2 1/2 ins. diam., 27 ins. in the ground, with brass cap mkd.



from which

The original bearing trees:

A fir, 24 ins. diam., bears S 57° E, 86 lks. dist., mkd. with an overgrown blaze. (Record: S 54° E, 86 lks.)

A fir, 10 ins. diam., bears S 53 1/2° W, 16 lks. dist., mkd. with an overgrown blaze.

The new bearing trees:

A fir, 10 ins. diam., bears N 19° E, 36 lks. dist., mkd. T28N R30W S11 BT.

A fir, 10 ins. diam., bears N 10° W, 43 lks. dist., mkd. T28N R30W S10 BT.

Bury the original stone alongside the iron post.

- II. Found a 2 1/2 in. diam. iron pipe, 4 ins. above ground, firmly set, with a 3 1/4 in diam. BLM brass cap mkd. as shown above, from which:

A rotten stump, bears N 34° E, 75.9 ft. dist. (115 lks.), mkd. with T28. (GLO)

A fir, 26 ins. diam, bears S 60° E, 59.6 ft. dist., (90 lks.), mkd. with a healed face. (GLO Record: S 54° 30' E, 85 lks.)

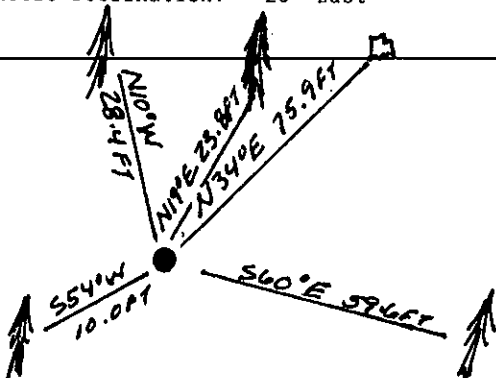
A fir, 12 ins. diam, bears S 54° W, 10.0 ft. dist., (15 lks.) mkd. with visible scribe marks. (GLO Record: 16 lks.)

A fir, 15 ins. diam., bears N 19° E, 23.8 ft. dist., (36 lks.) mkd. with visible scribe marks. (BLM)

A fir, 13 ins. diam., bears N 10° W, 28.4 ft. dist., (43 lks.) mkd. with N R 30W S10 BT. (BLM)

- III. Painted red bands around the bearing trees and attached Land Survey Monument and Bearing Tree signs.

Magnetic Declination: 20° East



SKETCH OF CORNER

## CERTIFICATION

Thomas M. Hommel

I, Thomas M. Hommel certify the information shown herein is true and correct.

Signature Ground Party Chief

Alvah F. Hughes

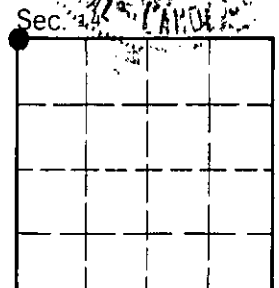
I, Alvah F. Hughes certify that this Corner Record correctly represents work performed by me or under my direction in compliance with the "Corner Recordation Act" (70-22-101, et seq., M.C.A.)

Signature of Surveyor & Seal

Date: 10/27/92 Reg. No. 7322

Employer: U.S. FOREST SERVICE

Office of Clerk and Recorder, County of Lincoln. This "corner record" was filed for record on Jan 14, 1993 was noted on the cross-index plat and is assigned page No. 5270, in book No. Coral M. Cumming By UB County Official



J-17 Cross Index No. 28 N 30 W T. 28 N R. 30 W P.M.M.

• - corner this sheet