

## INSTRUCTIONS

1. Original and/or subsequent record used to evaluate the corner position.
2. Description of evidence found, note discrepancies in the record, state method of establishing lost or obliterated corners.
3. Description of monument and accessories set to perpetuate the corner position.
4. Sketch of corner, show all pertinent data which can best be shown in a sketch example, corner marking, topography ties, position of accessories, etc.
5. Certification must be signed and sealed by Land Surveyor registered in the State of Montana.
6. Fill in Cross Index & Section Diagram at bottom of sheet.

## CERTIFIED CORNER RECORDATION

Corner NW Sec. Cor. S26 T. 28 N. R. 30 W. P.M.M. Lincoln County

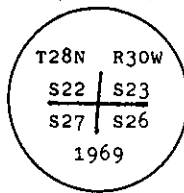
- I. 1900 G.L.O. record by Burton S. Adams: Set a limestone, 18x10x6 ins., 12 ins. in the ground, and four bearing trees.

1969 BLM Remonumentation by Roy G. Leedy: The cor. of secs. 22, 23, 26, and 27, monumented with a limestone, 14x10x6 ins., firmly set, mkd. 2 notches on the E. and S. edges, and witnessed by the remains of the original bearing trees:

- A stump hole, bears N  $81\frac{1}{4}^{\circ}$  E, 174 lks. dist.  
 A snag, bears S  $43\frac{1}{4}^{\circ}$  E, 80 lks. dist., mkd. T28N R30W S26 BT.  
 A larch, 16 ins. diam., bears S  $73^{\circ}$  W, 192 lks. dist., mkd. T28N R30W S27 BT. (Record: S  $70^{\circ}$  W)  
 A dead pine, 36 ins. diam., bears N  $72\frac{3}{4}^{\circ}$  W, 202 lks. dist., mkd. T28N R30W S22 BT.

At the corner point

Set an iron post, 30 ins. long, 2 1/2 ins. diam., 24 ins. in the ground, with brass cap mkd.



from which

- A fir, 7 ins. diam., bears N  $11^{\circ}$  E, 39 lks. dist., mkd. T28N R30W S23 BT.  
 A larch, 10 ins. diam., bears S  $10^{\circ}$  E, 29 lks. dist., mkd. T28N R30W S26 BT.  
 A larch, 6 ins. diam., bears S  $4\frac{1}{2}^{\circ}$  W, 29 lks. dist., mkd. T28N R30W S27 BT.  
 A larch, 10 ins. diam., bears N  $71\frac{1}{4}^{\circ}$  W, 34 lks. dist., mkd. T28N R30W S22 BT.

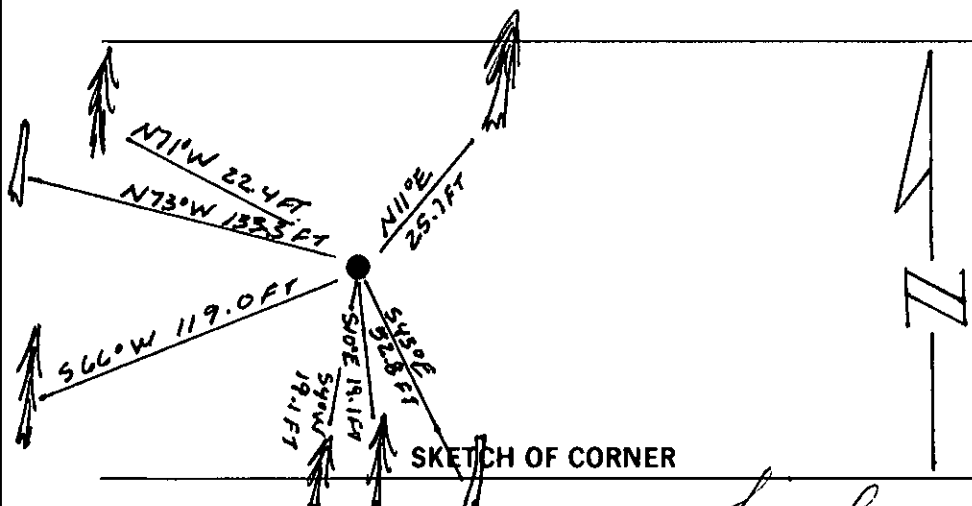
Bury the original stone alongside the iron post.

- II. Found a 2 1/2 in. diam. iron pipe, 3 ins. above ground, firmly set, with a 3 1/4 in diam. BLM brass cap mkd as shown above, from which:

- A larch snag, 9 ins. diam., bears S  $43^{\circ}$  E, 52.8 ft. dist. (80 lks.), mkd. 2 R 30 26. (GLO)  
 A larch, 28 ins. diam., bears S  $66^{\circ}$  W, 119.0 ft. dist. (180 lks.), mkd. with visible scribe marks. (Record: S  $73^{\circ}$  W, 192 lks.)  
 A pine snag, 38 ins. diam., bears N  $73^{\circ}$  W, 133.3 ft. dist. (202 lks.), mkd. T28N R30W S22 BT. (GLO)  
 A fir, 12 ins. diam., bears N  $11^{\circ}$  E, 25.7 ft. dist. (39 lks.), mkd. with visible scribe marks. (BLM)  
 A larch, 14 ins. diam., bears S  $10^{\circ}$  E, 19.1 ft. dist., (29 lks.), mkd. with a healed face. (BLM)  
 A larch, 8 ins. diam., bears S  $4^{\circ}$  W, 19.1 ft. dist., (29 lks.), mkd. with visible scribe marks. (BLM)  
 A larch, 13 ins. diam., bears N  $71^{\circ}$  W, 22.4 ft. dist., (34 lks.) mkd. with a healed faces. (BLM)

- III. Painted red bands around the bearing trees and attached Land Survey Monument and Bearing Tree signs.

Magnetic Declination:  $20^{\circ}$  East



## CERTIFICATION

I. Thomas M. Hommel  
 certify the information shown herein is true and correct  
Thomas M. Hommel  
 Signature of Ground Party Chief

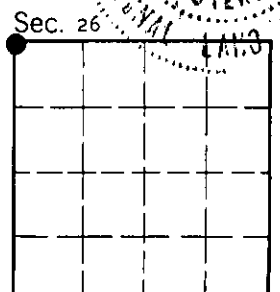
I. Alvah F. Hughes  
 certify that this Corner Record correctly represents work performed by me or under my direction in compliance with the "Corner Recordation Act" (70-22-101, et seq., M.C.A.)  
Alvah F. Hughes  
 Signature of Surveyor & Seal

Date: 11/16/92 Reg. No. 7322  
 Employer: U.S. FOREST SERVICE

Office of Clerk and Recorder, County of Lincoln. This "corner record" was filed for record on Jan 11, 1993 was noted on the cross-index plat and is assigned page No. 5269, in book No. Coral M. Cummings By OB

County Official

Cross Index No. R-17 T. 28 N R. 30 W PMM



• - corner this sheet