

INSTRUCTIONS

1. Original and/or subsequent record used to evaluate the corner position.
2. Description of evidence found, note discrepancies in the record, state method of establishing lost or obliterated corners.
3. Description of monument and accessories set to perpetuate the corner position.
4. Sketch of corner, show all pertinent data which can best be shown in a sketch example, corner marking, topography ties, position of accessories, etc.
5. Certification must be signed and sealed by Land Surveyor registered in the State of Montana.
6. Fill in Cross Index & Section Diagram at bottom of sheet.

CERTIFIED CORNER RECORDATION

Corner N 1/4 S26 T. 28 N. R. 30 W. P.M.M. Lincoln County

- I. 1900 G.L.O. record by Burton S. Adams: Set a limestone, 16x8x7 ins., 11 ins. in the ground, for 1/4 sec. cor., marked 1/4 on the N. face, from which:

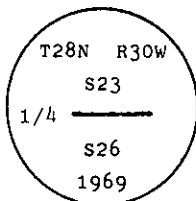
A tamarack, 15 ins. diam., bears N 73° E, 34 lks. dist., mkd. 1/4 S23 BT.
A fir, 18 ins. diam., bears S $87^{\circ} 15'$ W, 25 lks. dist., mkd. 1/4 S26 BT.

1969 BLM Remonumentation by Roy G. Leedy: The 1/4 sec. cor. of secs. 23 and 26, monumented with a limestone, 12x8x6 ins., firmly set, mkd. 1/4 on the N. face, and witnessed by the original bearing trees:

A larch, 20 ins diam., bears N 73° E, 34 lks. dist., mkd. with an overgrown blaze.
A fir, 24 ins. diam., bears S $87^{\circ} 1/4'$ W, 25 lks. dist., mkd. with an overgrown blaze.

At the corner point

Set an iron post, 30 ins. long, 2 1/2 ins. diam., 24 ins. in the ground, with brass cap mkd.



from which

A fir, 7 ins. diam., bears N $36^{\circ} 1/2'$ W, 10 lks. dist., mkd. 1/4 S23 BT.

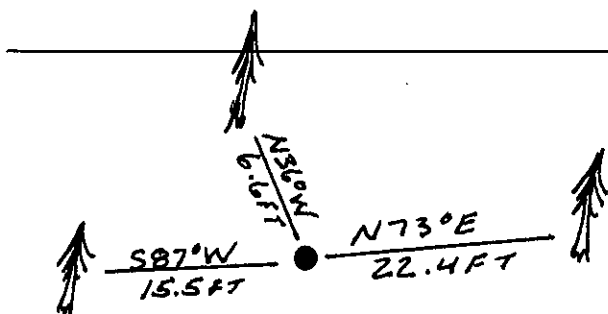
Bury the original stone alongside the iron post.

- II. Found a 2 1/2 in. diam. iron pipe, 10 ins. above ground, firmly set, with a 3 1/4 in diam. BLM brass cap mkd. as shown above, from which:

A larch, 20 ins. diam., bears N 73° E, 22.4 ft. dist. (34 lks.), mkd. with visible scribe marks
A fir, 25 ins. diam., bears S 87° W, 15.5 ft. dist. (23.5 lks.), healed face. (GLO record: 25 lks.)
A fir, 9 ins. diam., bears N 36° W, 6.6 ft. dist. (10 lks.), mkd. with a pitched face. (BLM)

- III. Painted red bands around the bearing trees and attached Land Survey Monument and Bearing Tree signs.

Magnetic Declination: 20° East



SKETCH OF CORNER

CERTIFICATION

Thomas M. Hommel

I, Thomas M. Hommel
certify the information shown herein is true and correct.

Signature Ground Party Chief

Alvah F. Hughes

I, Alvah F. Hughes
certify that this Corner Record correctly represents work performed by me or under my direction in compliance with the "Corner Recordation Act" (70-22-101, et seq., M.C.A.)

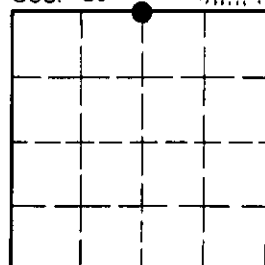
Signature of Surveyor & Seal

Date: 11/16/92 Reg. No. 7322 ISS

Employer: U.S. FOREST SERVICE

Office of Clerk and Recorder, County of Lincoln. This "corner record" was filed for record on Jan 11, 1993 was noted on the cross-index plat and is assigned page No. 5268, in book No. Coral M. Cumming By DB County Official

Sec. 26



Cross Index No. R-19 T. 28 N. R. 30 W. PMM

• - corner this sheet