

INSTRUCTIONS

1. Original and/or subsequent record used to evaluate the corner position.
2. Description of evidence found, note discrepancies in the record, state method of establishing lost or obliterated corners.
3. Description of monument and accessories set to perpetuate the corner position.
4. Sketch of corner, show all pertinent data which can best be shown in a sketch example, corner marking, topography ties, position of accessories, etc.
5. Certification must be signed and sealed by Land Surveyor registered in the State of Montana.
6. Fill in Cross Index & Section Diagram at bottom of sheet.

CERTIFIED CORNER RECORDATION

Corner N 1/4 S14 T. 28 N. R. 30 W. P.M.M. Lincoln County

- I. 1900 G.L.O. record by Burton S. Adams: Set a limestone, 14x10x5 ins., 9 ins. in the ground, for 1/4 sec. cor., marked 1/4 on the N. face, from which:

A pine, 20 ins. diam., bears S $43^{\circ}30'W$, 103 lks. dist., mkd. 1/4 S14 BT.

A tamarack, 20 ins. diam., bears N $49^{\circ}45'E$, 101 lks. dist., mkd. 1/4 S11 BT.

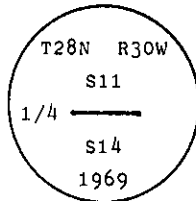
1969 BLM Remonumentation by Roy G. Leedy: The 1/4 sec. cor. of secs. 11 and 14, monumented with a limestone, 14x10x5 ins., firmly set, mkd. 1/4 on the N. face, and witnessed by the original bearing trees:

A larch, 24 ins. diam., bears N $49^{\circ}3/4'E$, 101 lks. dist., mkd. with an overgrown blaze.

A pine, 24 ins. diam., bears S $43^{\circ}1/2'W$, 103 lks. dist., mkd. with an overgrown blaze.

At the corner point

Set an iron post, 30 ins. long, 2 1/2 ins. diam., 24 ins. in the ground, with brass cap mkd.



from which

A fir, 10 ins. diam., bears S $74^{\circ}1/2'W$, 15 lks. dist., mkd. 1/4 S14 BT.

A fir, 12 ins. diam., bears N $14^{\circ}1/2'W$, 25 lks. dist., mkd. 1/4 S11 BT.

Bury the original stone alongside the iron post.

- II. Found a 2 1/2 in. diam. iron pipe, 12 ins. above ground, firmly set, with a 3 1/4 in diam. BLM brass cap mkd. as shown above, from which:

A pine stump, 20 ins. diam., bears S $53^{\circ}W$, 67.9 ft. dist. (103 lks.), S19 visible. (GLO record: S $43^{\circ}W$)

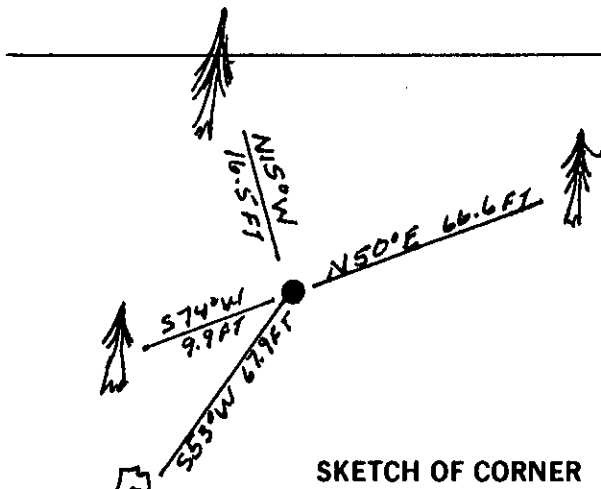
A larch, 23 ins. diam., bears N $50^{\circ}E$, 66.6 ft. dist. (101 lks.), healed face. (GLO)

A fir, 12 ins. diam., bears S $74^{\circ}W$, 9.9 ft. dist. (15 lks.), mkd. with visible scribe marks. (BLM)

A fir, 13 ins. diam., bears N $15^{\circ}W$, 16.5 ft. dist. (25 lks.), mkd. 1/4 S11 BT. (BLM)

- III. Painted red bands around the bearing trees and attached Land Survey Monument and Bearing Tree signs.

Magnetic Declination: 20° East



SKETCH OF CORNER

CERTIFICATION

Thomas M. Hommel

I, Thomas M. Hommel certify the information shown herein is true and correct.

Signature Ground Party Chief

Alvah F. Hughes

I, Alvah F. Hughes certify that this Corner Record correctly represents work performed by me or under my direction in compliance with the "Corner Recordation Act" (70-22-101, et seq., M.C.A.)

Signature of Surveyor & Seal

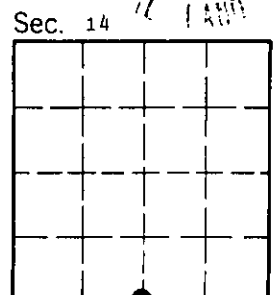
Date: 10/27/92 Reg. No. 7322

Employer: U.S. FOREST SERVICE

Office of Clerk and Recorder, County of Lincoln. This "corner record" was filed for record on Jan 11, 1993 was noted on the cross-index plat and is assigned page No. 5267, in book No. Coral M. Cummings By DB

County Official

Cross Index No. J-19 T. 28 N R. 30 W PMM



• - corner this sheet