

INSTRUCTIONS

1. Original and/or subsequent record used to evaluate the corner position.
2. Description of evidence found, note discrepancies in the record, state method of establishing lost or obliterated corners.
3. Description of monument and accessories set to perpetuate the corner position.
4. Sketch of corner, show all pertinent data which can best be shown in a sketch example, corner marking, topography ties, position of accessories, etc.
5. Certification must be signed and sealed by Land Surveyor registered in the State of Montana.
6. Fill in Cross Index & Section Diagram at bottom of sheet.

CERTIFIED CORNER RECORDATION

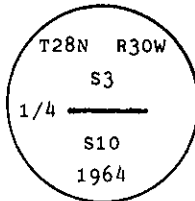
Corner N 1/4 S10 T. 28 N. R. 30 W. P.M.M. Lincoln County

I. 1900 G.L.O. record by Burton S. Adams: Set a limestone, 18x10x4 ins., 12 ins. in the ground, and 2 bearing trees.

1964 BLM Remonumentation by R. L. Larimer & H. W. Grusing: The 1/4 sec. cor. of secs. 3 and 10, monumented with an unmarked limestone, 18x10x4 ins., firmly set and witnessed by the remains of the original bearing trees.

At the corner point

Set an iron post, 30 ins. long, 2 1/2 ins. diam., 27 ins. in the ground, with brass cap mkd.



from which

The remains of the original bearing trees:

- A stump, 26 ins. diam., bears N 74 3/4° E, 84 lks. dist.
- A stump, 30 ins. diam., bears S 83 1/2° W, 28 lks. dist., visible marks BT.

The new bearing trees:

- A larch, 9 ins. dim., bears N 4° E, 60 lks. dist., mkd. 1/4 S3 BT.
- A larch, 10 ins. dim., bears S 1° E, 36 lks. dist., mkd. 1/4 S10 BT.

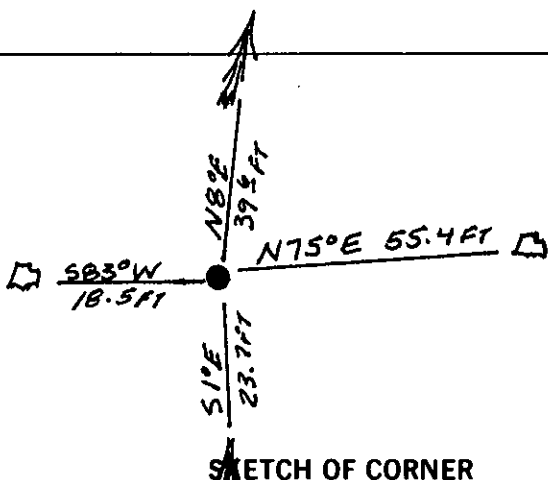
Bury the original stone alongside the iron post.

II. Found a iron pipe, 2 1/2 ins. diam., 3 ins. above ground, firmly set, with a 3 1/4 in. diam. BLM brass cap mkd. as shown above, from which:

- A pine stump, 19 ins. dim., bears N 75° E, 55.4 ft. dist. (84 lks.), with no visible marks. (GLO)
- A pine stump, 15 ins. dim., bears S 83° W, 18.5 ft. dist. (28 lks.), with no visible marks. (GLO)
- A larch, 13 ins. diam., bears N 8° E, 39.6 ft. dist. (60 lks.), with visible scribe marks. (BLM)
- A larch, 13 ins. diam., bears S 1° E, 23.7 ft. dist. (36 lks.), mkd. with a healed face. (BLM)

III. Painted red bands around the bearing trees and attached Land Survey Monument and Bearing Tree signs.

Magnetic Declination: 20° East



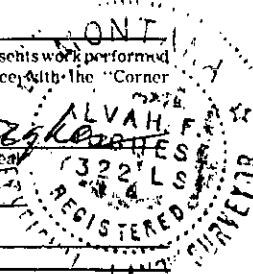
SKETCH OF CORNER

CERTIFICATION

I. Thomas M. Hommel
 certify the information shown herein is true and correct.
Thomas M. Hommel
 Signature Ground Party Chief

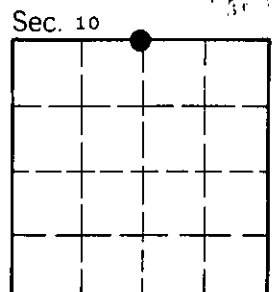
I. Alvah F. Hughes
 certify that this Corner Record correctly represents work performed by me or under my direction in compliance with the "Corner Recordation Act" (70-22-101, et seq., M.C.A.)
Alvah F. Hughes
 Signature of Surveyor & Seal

Date: 11/19/92 Reg. No. 7322 L.S.
 Employer: U.S. FOREST SERVICE



Office of Clerk and Recorder, County of Lincoln. This "corner record" was filed for record on Jan 11, 1993 was noted on the cross-index plat and is assigned page No. 5266, in book No. _____

E-15
 Cross Index No. _____ T. 28 N R. 30 W P.M.M.



• - corner this sheet