

INSTRUCTIONS

1. Original and/or subsequent record used to evaluate the corner position.
2. Description of evidence found, note discrepancies in the record, state method of establishing lost or obliterated corners.
3. Description of monument and accessories set to perpetuate the corner position.
4. Sketch of corner, show all pertinent data which can best be shown in a sketch example, corner marking, topography ties, position of accessories, etc.
5. Certification must be signed and sealed by Land Surveyor registered in the State of Montana.
6. Fill in Cross Index & Section Diagram at bottom of sheet.

CERTIFIED CORNER RECORDATION

Corner E 1/4 S24 T. 28 N. R. 30 W. P.M.M. Lincoln County

- I. 1969 G.L.O. record by Burton S. Adams: Set a limestone, 15x12x5 ins., 10 ins. in the ground, for 1/4 sec. cor., marked 1/4 on the W. face, from which:

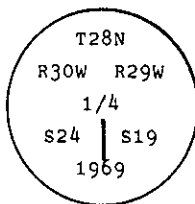
A tamarack, 16 ins. diam., bears S 18° E, 100 lks. dist., mkd. 1/4 S19 BT.
A tamarack, 12 ins. diam., bears S 31 1/2° W, 35 lks. dist., mkd. 1/4 S24 BT.

1969 BLM Remonumentation by Roy G. Leedy: The 1/4 sec. cor. of secs. 19 and 24, on the E. bdy. of the Tp., monumented with a limestone, 12x10x6 ins., firmly set, mkd. 1/4 on the W. face, and witnessed by the original bearing trees:

A larch, 20 ins diam., bears S 18° E, 100 lks. dist., mkd. S19
A larch, 14 ins. diam., bears S 31 1/4° W, 35 lks. dist., mkd. 1/4 S24 BT.

At the corner point

Set an iron post, 30 ins. long, 2 1/2 ins. diam., 24 ins. in the ground, with brass cap mkd.



from which

A larch, 8 ins. diam., bears N 61° E, 5 lks. dist., mkd. 1/4 S19 BT.
A larch, 8 ins. diam., bears S 24 1/2° W, 22 lks. dist., mkd. 1/4 S24 BT.

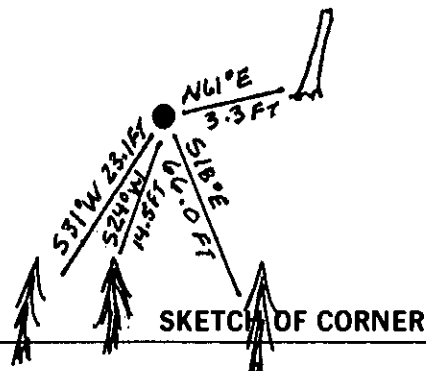
Bury the original stone alongside the iron post.

- II. Found a 2 1/2 in. diam. iron pipe, 4 ins. above ground, firmly set, with a 3 1/4 in diam. BLM brass cap mkd. as shown above, from which:

A larch, 20 ins. diam., bears S 18° E, 66.0 ft. dist. (100 lks.), mkd. S19. (GLO)
A larch, 14 ins. diam., bears S 31° W, 23.1 ft. dist. (35 lks.), mkd. 24. (GLO)
A larch snag, 7 ins. diam., bears N 61° E, 3.3 ft. dist. (5 lks.), mkd. 1/4 S19 BT. (BLM)
A larch, 7 ins. diam., bears S 24° W, 14.5 ft. dist. (22 lks.), mkd. 1/4 S24 BT. (BLM)

- III. Painted red bands around the bearing trees and attached Land Survey Monument and Bearing Tree signs.

Magnetic Declination: 20° East



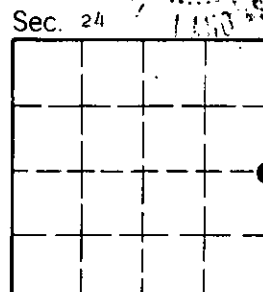
CERTIFICATION

I, Thomas M. Hommel
certify the information shown herein is true and correct.
Thomas M. Hommel
Signature Ground Party Chief

I, Alvah F. Hughes
certify that this Corner Record correctly represents work performed by me or under my direction in compliance with the "Corner Recordation Act" (70-22-101, et seq., M.C.A.).
Alvah F. Hughes
Signature of Surveyor & State Engineer

Date: 10/28/92 Reg. No. 7322 LS
Employer: U.S. FOREST SERVICE

Office of Clerk and Recorder, County of Lincoln. This "corner record" was filed for record on Jan 11, 1993 was noted on the cross-index plat and is assigned page No. 5265, in book No. Coral M. Cumming By OB County Official



P-25 Cross Index No. T. 28 N. R. 30 W. P.M.M.

• - corner this sheet