

## INSTRUCTIONS

1. Original and/or subsequent record used to evaluate the corner position.
2. Description of evidence found, note discrepancies in the record, state method of establishing lost or obliterated corners.
3. Description of monument and accessories set to perpetuate the corner position.
4. Sketch of corner, show all pertinent data which can best be shown in a sketch example, corner marking, topography ties, position of accessories, etc.
5. Certification must be signed and sealed by Land Surveyor registered in the State of Montana.
6. Fill in Cross Index & Section Diagram at bottom of sheet.

## CERTIFIED CORNER RECORDATION

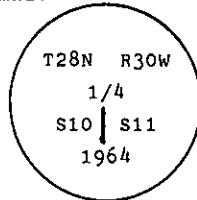
Corner E 1/4 S10 T. 28 N. R. 30 W. P.M.M. Lincoln County

- I. 1900 G.L.O. record by Burton S. Adams: Set a limestone, 14x12x6 ins., 9 ins. in the ground, and 2 bearing trees.

1964 BLM Remonumentation by R. L. Larimer & H. W. Grusing: The 1/4 sec. cor. of secs. 10 and 11, as determined from the remains of the original bearing trees.

At the corner point

Set an iron post, 30 ins. long, 2 1/2 ins. diam., 20 ins. in the ground, to bedrock, and in a mound of stone, 4 ft. diam., to top, with brass cap mkd.



from which

The remains of the original bearing trees:

A stump, 12 ins. diam., bears N 19 1/4° E, 26 lks. dist.

A stump, 23 ins. diam., bears N 45° W, 21 lks. dist., mkd. 1/4 S10 BT.

The new bearing trees:

A fir, 6 ins. dim., bears N 83° E, 18 lks. dist., mkd. 1/4 S11 BT.

A fir, 10 ins. dim., bears N 62° W, 41 lks. dist., mkd. 1/4 S10 BT.

- II. Found a iron pipe, 2 1/2 ins. diam., with a 3 1/4 in. diam. BLM brass cap mkd. as shown above. The position of the corner falls in the middle of a flowing stream bed and the iron pipe was found pushed over and buried. I determined the correct position of the corner by distance-distance intersection from the existing bearing trees and reset the iron pipe. Build a collar of stone around the iron pipe. From which:

A fir, 9 ins. dim., bears N 83° E, 11.8 ft. dist. (18 lks.), mkd. with visible scribe marks. (BLM)

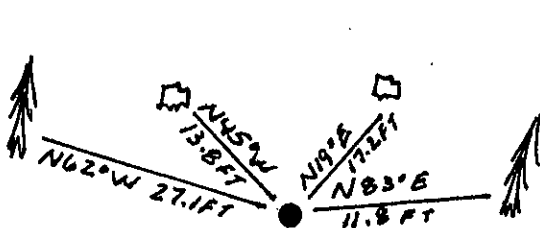
A fir, 13 ins. dim., bears N 62° W, 27.1 ft. dist. (41 lks.) mkd. with visible scribe marks. (BLM)

The rotten remains of a stump, bears N 45° W, 13.8 ft. dist. (21 lks.), no visible marks. (GLO)

The rotten remains of a stump, bears N 19° E, 17.2 ft. dist. (26 lks.), no visible marks. (GLO)

- III. Painted red bands around the bearing trees and attached Land Survey Monument and Bearing Tree signs.

Magnetic Declination: 20° East



SKETCH OF CORNER

## CERTIFICATION

I, Thomas M. Hommel  
certify the information shown herein is true and correct.  
Thomas M. Hommel  
Signature Ground Party Chief

I, Alvah F. Hughes  
certify that this Corner Record correctly represents work performed by me or under my direction in compliance with the "Corner Recordation Act" (70-22-101, et seq., M.C.A.)

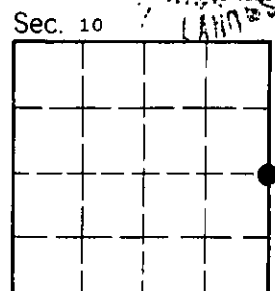
Alvah F. Hughes  
Signature of Surveyor & Seal

Date: 11/19/92 Reg. No. 7322 LS

Employer: U.S. FOREST SERVICE

Office of Clerk and Recorder, County of Lincoln. This "corner record" was filed for record on Jan 11, 1993 was noted on the cross-index plat and is assigned page No. 5264, in book No. Coral M. Cummings By DB

County Official



• - corner this sheet

Cross Index No. G-17 T. 28 N R. 30 W PMM