

**INSTRUCTIONS**

1. Original and/or subsequent record used to evaluate the corner position.
2. Description of evidence found, note discrepancies in the record, state method of establishing lost or obliterated corners.
3. Description of monument and accessories set to perpetuate the corner position.
4. Sketch of corner, show all pertinent data which can best be shown in a sketch example, corner marking, topography ties, position of accessories, etc.
5. Certification must be signed and sealed by Land Surveyor registered in the State of Montana.
6. Fill in Cross Index & Section Diagram at bottom of sheet.

**CERTIFIED CORNER RECORDATION**

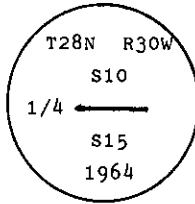
Corner S 1/4 S10 T. 28 N. R. 30 W. P.M.M. Lincoln County

I. 1900 G.L.O. record by Burton S. Adams: Set a limestone, 24x8x8 ins., 16 ins. in the ground, and 2 bearing trees.

1964 BLM Remonumentation by R. L. Larimer & H. W. Grusing: The 1/4 sec. cor. of secs. 10 and 15, monumented with a limestone, 24x8x8 ins., loosely set and mkd. 1/4 on the N. face, and witnessed by the remains of the original bearing trees.

At the corner point

Set an iron post, 30 ins. long, 2 1/2 ins. diam., 27 ins. in the ground, with brass cap mkd.



from which

The remains of the original bearing trees:

- A larch, 11 ins. diam., bears S 20° W, 33 lks. dist., mkd. with an overgrown blaze. (Record: S 20° E, 33 lks.)
- A stump, 15 ins. diam., bears N 63 1/4° W, 81 lks. dist., visible marks 1/4 S10 BT.

The new bearing trees:

- A larch, 10 ins. dim., bears N 58° W, 55 lks. dist., mkd. 1/4 S10 BT.

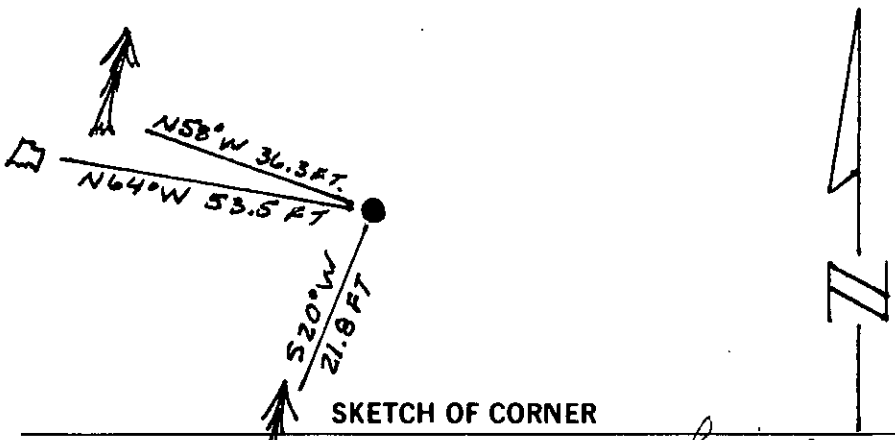
Bury the original stone alongside the iron post.

II. Found a iron pipe, 2 1/2 ins. diam., 6 ins. above ground, firmly set, with a 3 1/4 in. diam. BLM brass cap mkd. as shown above, from which:

- A larch, 13 ins. dim., bears S 20° W, 21.8 ft. dist. (33 lks.), mkd. with a healed face. (GLO)
- The rotten remains of a fir stump, bears N 64° W, 53.5 ft. dist. (81 lks.), with no visible marks. (GLO)
- A larch, 12 ins. diam., bears N 58° W, 36.3 ft. dist. (55 lks.), mkd. with a healed face. (BLM)

III. Painted red bands around the bearing trees and attached Land Survey Monument and Bearing Tree signs.

Magnetic Declination: 20° East



**CERTIFICATION**

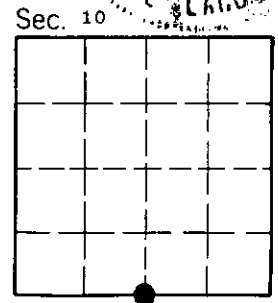
I, Thomas M. Hommel  
 certify the information shown herein is true and correct.  
*Thomas M. Hommel*  
 Signature Ground Party Chief

I, Alvah F. Hughes  
 certify that this Corner Record correctly represents work performed by me or under my direction in compliance with the "Corner Recordation Act" (70-22-101 et seq., M.C.A.)  
*Alvah F. Hughes*  
 Signature of Surveyor & Seal

Date: 11/19/92 Reg. No. 7322 VS  
 Employer: U.S. FOREST SERVICE

GNT  
 ALVAH F. HUGHES  
 7322 VS  
 REGISTERED  
 LAND SURVEYOR

Office of Clerk and Recorder, County of Lincoln. This "corner record" was filed for record on Jan 11, 1993 was noted on the cross-index plat and is assigned page No. 5263, in book No. \_\_\_\_\_, in Coral M. Cummings G.P.B. County Official



J-15      28 N      30 W  
 Cross Index No. \_\_\_\_\_ T. \_\_\_\_\_ R. \_\_\_\_\_ P.M.M.

• - corner this sheet