

## INSTRUCTIONS

1. Original and/or subsequent record used to evaluate the corner position.
2. Description of evidence found, note discrepancies in the record, state method of establishing lost or obliterated corners.
3. Description of monument and accessories set to perpetuate the corner position.
4. Sketch of corner, show all pertinent data which can best be shown in a sketch example, corner marking, topography ties, position of accessories, etc.
5. Certification must be signed and sealed by Land Surveyor registered in the State of Montana.
6. Fill in Cross Index & Section Diagram at bottom of sheet.

## CERTIFIED CORNER RECORDATION

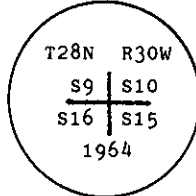
Corner SW Sec. Cor S10 T. 28 N. R. 30 W. P.M.M. Lincoln County

- I. 1900 G.L.O. record by Burton S. Adams: Set a granite stone, 22x10x4 ins., 16 ins. in the ground, and four bearing trees.

1964 BLM Remonumentation by R. L. Larimer & H. W. Grusing: The cor. of secs. 9, 10, 15 & 16, monumented with a granite stone, 22x10x4 ins., loosely set and mkd. with 3 grooves on the E., and 4 grooves on the S. faces, and witnessed by the remains of the original bearing trees.

At the corner point

Set an iron post, 30 ins. long, 2 1/2 ins. diam., 27 ins. in the ground, with brass cap mkd.



From which

The original bearing trees:

- A larch, 20 ins. diam., bears N 10° E, 70 lks. dist., mkd. with an overgrown blaze.
- A fir, 16 ins. diam., bears S 56 1/4° E, 46 lks. dist., mkd. with an overgrown blaze.
- A dead larch, 20 ins. diam., bears S 53° W, 82 lks. dist., mkd. with an overgrown blaze.
- A larch, 18 ins. diam., bears N 81 1/2° W, 32 lks. dist., mkd. with an overgrown blaze.

The new bearing trees:

- A pine, 8 ins. diam., bears S 72 1/2° W, 47 lks. dist., mkd. T28N R30W S16 BT.
- Bury the original stone alongside the iron post.

- II. Found a 2 1/2 in. diam. iron pipe, 6 ins. above ground, firmly set, with a 3 1/4 in diam. BLM brass cap mkd. as shown above, from which:

- A larch, 20 ins. diam., bears N 10° E, 46.2 ft. dist. (70 lks.), mkd. with visible scribe marks. (GLO) (dying, broken top)
- A fir, 20 ins. diam., bears S 56° E, 30.4 ft. dist. (46 lks.), mkd. with a healed face. (GLO)
- A larch stump, 18 ins. diam., with a log laying alongside, bears S 53° W, 54.1 ft. dist. (82 lks.), mkd. with visible scribe marks. (GLO)
- A larch, 20 ins. diam., bears N 81° W, 21.1 ft. dist. (32 lks.), mkd. with visible scribe marks. (GLO)
- A dead pine, 9 ins. diam., bears S 72° W, 31.0 ft. dist. (47 lks.), mkd. with visible scribe marks. (BLM)

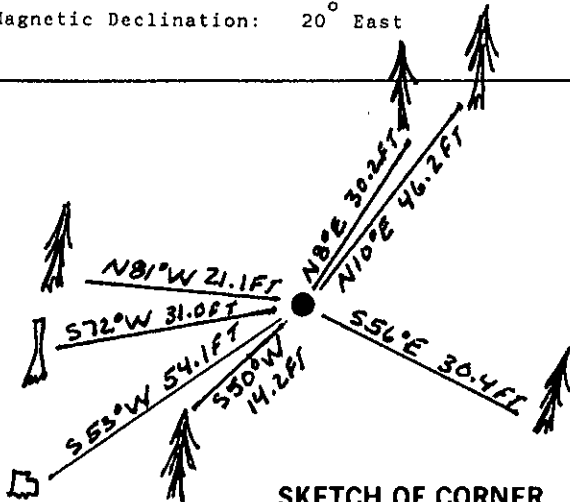
- III. Established 2 new bearing trees:

A fir, 19 ins. diam., bears N 8° E, 30.2 ft dist., mkd. T28N R30W S10 BT.

A fir, 6 ins. diam., bears S 50° W, 14.2 ft. dist., mkd. T28N R30W S16 BT.

Painted red bands around the bearing trees and attached Land Survey Monument and Bearing Tree signs.

Magnetic Declination: 20° East



SKETCH OF CORNER

## CERTIFICATION

I, Thomas M. Hommel  
certify the information shown herein is true and correct  
Thomas M. Hommel  
Signature Ground Party Chief

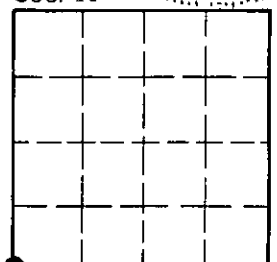
I, Alvah F. Hughes  
certify that this Corner Record correctly represents work performed  
by me or under my direction in compliance with the "Corner  
Recordation Act" (70-22-101, et seq., M.C.A.)  
Alvah F. Hughes  
Signature of Surveyor & Seal

Date: 11/18/92 Reg. No. 7322

Employer: U.S. FOREST SERVICE

Office of Clerk and Recorder, County of Lincoln. This "corner  
record" was filed for record on Jan 11, 1993  
was noted on the cross-index plat and is assigned page No. 5262, in  
book No. Coral M. Cummings & BB  
County Official

Sec. 10



• - corner this sheet

Cross Index No. J-13 T. 28 N R. 30 W P.M.M.