

## INSTRUCTIONS

1. Original and/or subsequent record used to evaluate the corner position.
2. Description of evidence found, note discrepancies in the record, state method of establishing lost or obliterated corners.
3. Description of monument and accessories set to perpetuate the corner position.
4. Sketch of corner, show all pertinent data which can best be shown in a sketch example, corner marking, topography ties, position of accessories, etc.
5. Certification must be signed and sealed by Land Surveyor registered in the State of Montana.
6. Fill in Cross Index & Section Diagram at bottom of sheet.

## CERTIFIED CORNER RECORDATION

Corner SE Sec. Cor. S24 T. 28 N. R. 30 W. P.M.M. Lincoln County

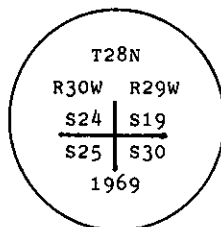
- I. 1900 G.L.O. record by Burton S. Adams: Set a granite stone, 12x10x8 ins., 6 ins. in the ground and four bearing trees.

1969 BLM Remonumentation by Roy G. Leedy: The cor. of secs. 19, 24, 25, and 30, on the east boundary of the Tp., monumented with a granite stone, 11x10x6 ins., firmly set, mkd. 4 notches on the N. and 2 notches on the S. edges, and witnessed by the remains of the original bearing trees:

- A snag, bears N  $54^{\circ}$  E. 5 lks. dist., mkd 28 29 S19  
 A fir, 16 ins. diam., bears S  $3\frac{1}{2}^{\circ}$  W, 90 lks. dist., mkd T28N R30W S25 BT.  
 A fir, 20 ins. diam., bears N  $61\frac{3}{4}^{\circ}$  W, 30 lks. dist., mkd with an overgrown blaze.

At the corner point

Set an iron post, 30 ins. long, 2 1/2 ins. diam., 24 ins. in the ground, with brass cap mkd.



From which

- A fir, 8 ins. diam., bears N  $29^{\circ}$  E, 8 lks. dist., mkd T28N R29W S19 BT.  
 A fir, 7 ins. diam., bears S  $63^{\circ}$  E, 29 lks. dist., mkd T28N R29W S30 BT.

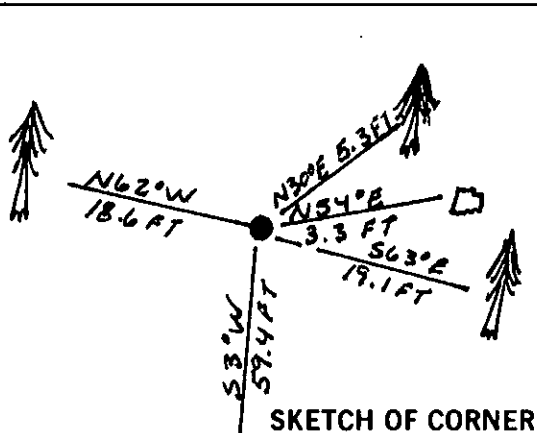
Bury the original stone alongside the iron post.

- II. Found an iron pipe, 2 1/2 ins. diam., 3 ins. above the ground, firmly set, with a 3 1/4 in. diam. BLM brass cap mkd. as shown above, from which:

- A pine stump, 12 ins. diam., bears N  $54^{\circ}$  E, 3.3 ft. dist. (5 lks.), with no visible marks. (GLO)  
 A fir, 19 ins. diam., bears S  $3^{\circ}$  W, 59.4 ft. dist. (90 lks.), mkd. with R 3 S. (GLO)  
 A fir, 20 ins. diam., bears N  $62^{\circ}$  W, 18.6 ft. dist. (28 lks.), mkd. with a pitched face. (GLO Record: 30 lks.)  
 A fir, 11 ins. diam., bears N  $30^{\circ}$  E, 5.3 ft. dist. (8 lks.), mkd. with visible scribe marks. (BLM)  
 A fir, 9 ins. diam., bears S  $63^{\circ}$  E, 19.1 ft. dist. (29 lks.), mkd. with visible scribe marks. (BLM)

- III. Painted red bands around the bearing trees and attached Land Survey Monument and Bearing Tree signs.

Magnetic Declination:  $20^{\circ}$  East



SKETCH OF CORNER

## CERTIFICATION

Thomas M. Hommel

I, Thomas M. Hommel certify the information shown herein is true and correct.

Signature Ground Party Chief

Alvah F. Hughes

I, Alvah F. Hughes certify that this Corner Record correctly represents work performed by me or under my direction in compliance with the "Corner Recordation Act" (70-22-101, et seq., M.C.A.)

Signature of Surveyor & Seal

Date: 10/27/92 Reg. No. 7322 LS

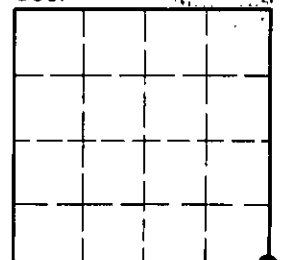
Employer: U.S. FOREST SERVICE

Office of Clerk and Recorder, County of Lincoln. This "corner record" was filed for record on Jan 11, 1993 was noted on the cross-index plat and is assigned page No. 5261, in book No. Corral M. Cunningham By DB

County Official

Cross Index No. R-25 T. 28 N R. 30 W PMM

Sec. 24



• - corner this sheet