

INSTRUCTIONS

1. Original and/or subsequent record used to evaluate the corner position.
2. Description of evidence found, note discrepancies in the record, state method of establishing lost or obliterated corners.
3. Description of monument and accessories set to perpetuate the corner position.
4. Sketch of corner, show all pertinent data which can best be shown in a sketch example, corner marking, topography ties, position of accessories, etc.
5. Certification must be signed and sealed by Land Surveyor registered in the State of Montana.
6. Fill in Cross Index & Section Diagram at bottom of sheet.

CERTIFIED CORNER RECORDATION

Corner SW Sec. Cor. S24 T. 28 N. R. 30 W. P.M.M. Lincoln County

- I. 1900 G.L.O. record by Burton S. Adams: Set a limestone, 16x10x5 ins., 11 ins. in the ground, and four bearing trees.

1969 BLM Remonumentation by Roy G. Leedy: The cor. of secs. 23, 24, 25, and 26, monumented with a limestone, 12x10x6 ins., firmly set, mkd. 1 notch on the E. and 2 notches on the S. edges, and witnessed by the remains of the original bearing trees and a bearing tree of unknown origin:

The original bearing trees:

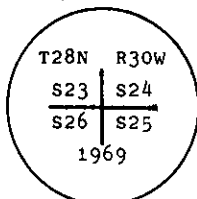
- A stump hole, bears N $15\frac{1}{2}^{\circ}$ E, 46 lks. dist., with fallen log, mkd. T28N 24, lying alongside.
- A larch, 16 ins. diam., bears S 55° E, 38 lks. dist., mkd. with an overgrown blaze.
- A fir, 18 ins. diam., bears S 5° W, 56 lks. dist., mkd. 30 S26. (Record: S $30\frac{1}{2}^{\circ}$ W)
- A snag, bears N $30\frac{1}{2}^{\circ}$ W, 40 lks. dist., mkd. 28N S23 (Record: N $3^{\circ}20'$ W)

A bearing tree of unknown origin:

- A fir, 20 ins. diam., bears N 80° W, 54 lks. dist., mkd. 28 30 23.

At the corner point

Set an iron post, 30 ins. long, 2 1/2 ins. diam., 24 ins. in the ground, with brass cap mkd.



from which

- A fir, 9 ins. diam., bears N $43\frac{1}{2}^{\circ}$ E, 52 lks. dist., mkd. T28N R30W S24 BT.

Bury the original stone alongside the iron post.

- II. Found a 2 1/2 in. diam. iron pipe, 6 ins. above ground, firmly set, with a 3 1/4 in diam. BLM brass cap mkd. as shown above, from which:

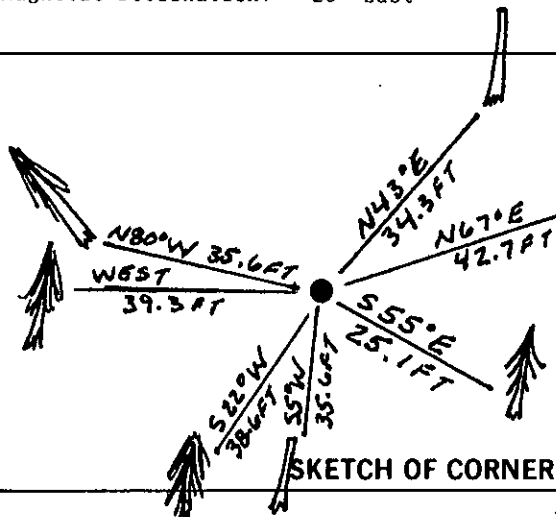
- A larch, 17 ins. diam., bears S 55° E, 25.1 ft. dist. (38 lks.), mkd. with a healed face. (GLO)
- A fir snag, 10 ins. diam., bears N 43° E, 34.3 ft. dist. (52 lks.), mkd. T28N R30W S24 BT. (BLM)
- A down fir, 25 ins. diam., bears N 80° W, 35.6 ft. dist. (54 lks.), with 30W visible. (unknown origin)
- A fir snag, 24 ins. diam., bears S 5° W, 35.6 ft. dist. (54 lks.), with 28 0 visible (GLO Record: Larch S $30^{\circ}30'$ W, 56 lks.)

- III. Established 3 new bearing trees:

- A spruce, 9 ins. diam., bears N 67° E, 42.7 ft. dist., mkd. T28N R30W S24 BT.
- A fir, 15 ins diam., bears S 22° W, 38.6 ft. dist., mkd. T28N R30W S26 BT.
- A fir, 8 ins. diam., bears WEST, 39.3 ft. dist., mkd. T28N R30W S23 BT.

Painted red bands around the bearing trees and attached Land Survey Monument and Bearing Tree signs.

Magnetic Declination: 20° East



CERTIFICATION

I, Thomas M. Hommel
certify the information shown herein is true and correct.

Thomas M. Hommel
Signature Ground Party Chief

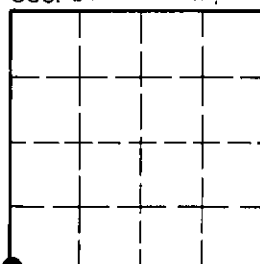
I, Alvah F. Hughes
certify that this Corner Record correctly represents work performed by me or under my direction in compliance with the "Corner Recordation Act" (70-22-101, et seq., M.C.A.)

Alvah F. Hughes
Signature of Surveyor & Seal

Date: 11/16/92 Reg. No. 7322 LS

Employer: U.S. FOREST SERVICE

Sec. 24



Office of Clerk and Recorder, County of Lincoln. This "corner record" was filed for record on Jan 11, 1993 was noted on the cross-index plat and is assigned page No. 5260, in book No. Coral M. Cumming B, DB

County Official

Cross Index No. R-21 T. 28 N R. 30 W PMM