

INSTRUCTIONS

1. Original and/or subsequent record used to evaluate the corner position.
2. Description of evidence found, note discrepancies in the record, state method of establishing lost or obliterated corners.
3. Description of monument and accessories set to perpetuate the corner position.
4. Sketch of corner, show all pertinent data which can best be shown in a sketch example, corner marking, topography ties, position of accessories, etc.
5. Certification must be signed and sealed by Land Surveyor registered in the State of Montana.
6. Fill in Cross Index & Section Diagram at bottom of sheet.

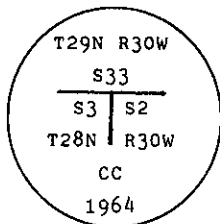
CERTIFIED CORNER RECORDATION

CC Secs. 2 and 3 T. 28 N., R. 30 W., Lincoln County

- I. 1900 G.L.O. original record by Burton S. Adams: Set a limestone monument and 2 bearing trees.

1964 BLM Remonumentation by Pittman et al: "The closing cor. of secs. 2 and 3, monumented with a slate stone, 22x10x4 ins., firmly set and mkd. CC on S. face, with 2 grooves on the E. and 4 grooves on the W. faces, and witnessed by one of the original bearing trees:

At the corner point; set an iron post 30 ins. long, 2 1/2 ins. dia., 27 ins. in the ground, with brass cap marked:



from which

The original bearing tree:

A fir, 13 ins. dia., bears S48° E, 52 lks. dist., mkd. T28N R30W S2 CC BT. (Record)

The new bearing tree:

A pine, 8 ins. diam., bears S89° W, 62 lks. dist., mkd. T28N R30W S3 CC BT.

Bury the original stone alongside of the iron post."

1975 Private Certified Corner Recordation by J. H. Ninneman Reg. No. 534 ES: "B.L.M. B.C. Mon.-2 B.T.s"

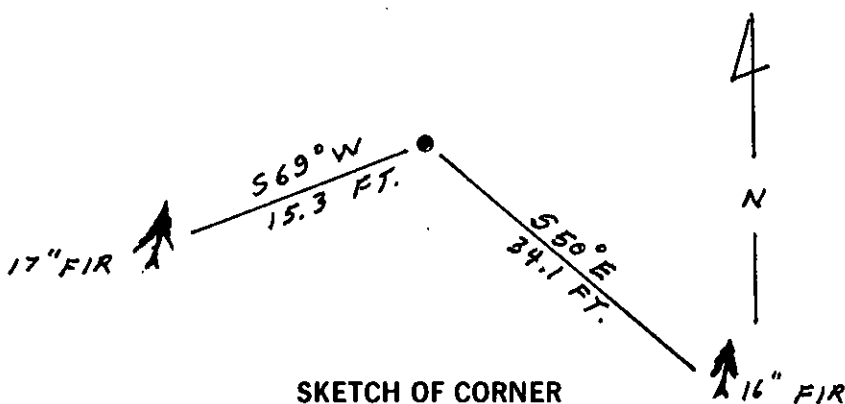
- II. Found an iron post, 2 1/2 ins. dia., 5 ins. out of the ground with a 3 1/4 ins. dia. B.L.M. brass cap mkd. as shown above, from which

A douglas fir, 16 ins. dia., bears S50° E, 34.1 ft. (51.7 lks.) dist., mkd. T28N (original).

A douglas fir, 17 ins. dia., bears S69° W, 15.3 ft. (23.2 lks.) dist., scribe overgrown (Record unknown).

- III. Painted a red band around each bearing tree and attached Land Survey Monument and Bearing Tree signs.

Set a 6 ft. galvanized steel guard post with Survey Marker decal attached, 3 ft., South from corner.
Magnetic Declination: 19° East.



SKETCH OF CORNER

CERTIFICATION

I, Mark Federman
certify the information shown herein is true and correct.

Signature Ground Party Chief

I, Alvah F. Hughes,
certify that this Corner Record correctly represents work performed by me or under my direction in compliance with the "Corner Recordation Act" (70-22-101, et seq., M.C.A.)

Signature of Surveyor & Seal

Date: 12/26/89 Reg. No. 3320

Employer: U.S. FOREST SERVICE

Office of Clerk and Recorder, County of Lincoln. This "corner record" was filed for record on 1-3-91

was noted on the cross-index plat and is assigned page No. 4465, in

book No. _____

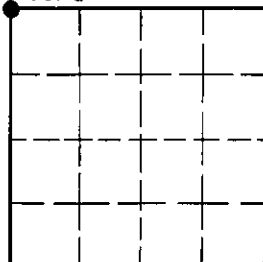
Grant B. Sugil by Bill Buckhoff
County Official

A-17

28 N 30 W

Cross Index No. _____ T. _____ R. _____ PMM

Sec. 2



• - corner this sheet