

CERTIFIED LAND CORNER RECORDATION

Recordation of Monuments Set in Section 27 & 22 Twp. 28 N., R. 30 W., M.P.M.

DESCRIPTION OF CORNER EVIDENCE FOUND, AND ORIGINAL RECORD (IF KNOWN)

SEE DIAGRAM ON OTHER SIDE FOR CORNERS FOUND

DESCRIPTION OF MONUMENT AND ACCESSORIES ESTABLISHED
TO PERPETUATE THE ORIGINAL LOCATION OF THIS CORNER:

Date of work: Sept. 1973

SEE DIAGRAM ON OTHER SIDE FOR CORNERS SET

SKETCH, WITH COURSE AND DISTANCE TO ADJACENT CORNERS IF DETERMINED IN THIS SURVEY.
(MAY SKETCH OR PASTE REPRODUCTION ON REVERSE SIDE.)

SEE REVERSE SIDE

Surveyor's Seal

Jack H. Ninneman

I, _____
certify that the information shown herein is true and
correct.

Jack H. Ninneman
Signature of Ground Party Chief

Jack W. Ninneman

I, _____
certify that I have carefully performed or reviewed the
work done on the diagrammed corner as reported on this
recordation form and approve the same.

Jack W. Ninneman
Signature of Surveyor
Montana License #534 E.S.

DIAGRAM OF CORNER:

N. See diagram
on reverse side

= Corner recorded on the sheet

Registration Number

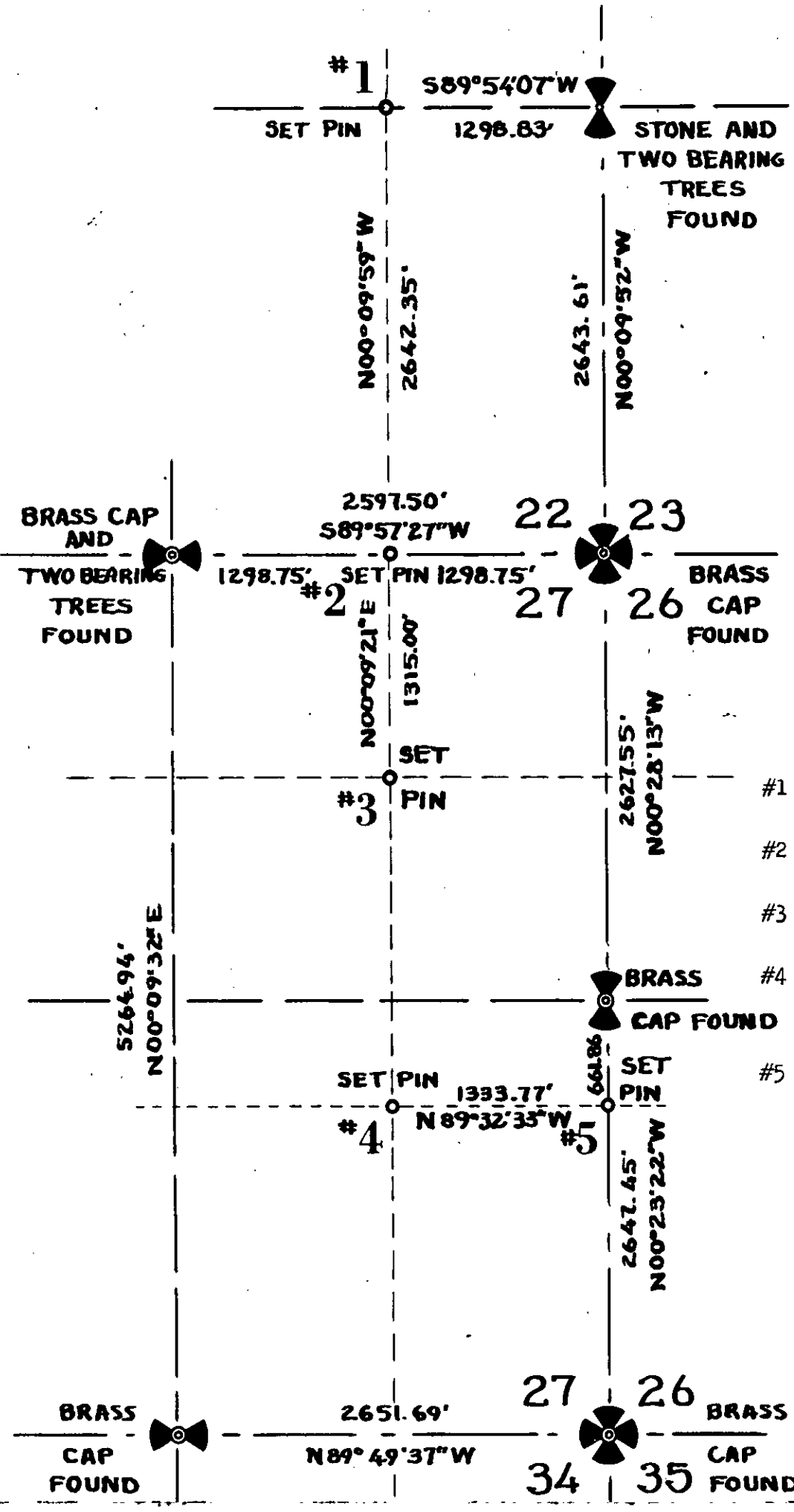
Office of Clerk and Recorder, County of Lincoln

This "corner record" was filed for record on the 2nd day of November 1973, was noted on the cross-index plat and is
assigned page No. 295, in book No. 1

Elmer L. Hughes, Esq. Mae Watson, Deputy
County Official

RECORDATION OF MONUMENTS

SET IN SECTIONS 27 & 22 TWP. 28N., R. 30W., M.P.M.



STEEL PINS
SET: 0



- #1 Steel Pin set for C 1/16 E Sec. 22
- #2 Steel Pin Set for N 1/16E Sec. 27
- #3 Steel Pin Set for C 1/16 N E Sec. 27
- #4 Steel Pin Set for Southwest Corner of $N\frac{1}{2}$ $NE\frac{1}{4}$ $SE\frac{1}{4}$ Sec. 27.
- #5 Steel Pin Set for Southeast Corner of $N\frac{1}{2}$ $NE\frac{1}{4}$ $SE\frac{1}{4}$ Sec. 27