

CERTIFIED LAND CORNER RECORDATION

Section 10 Twp. 28 N., R. 30 W., M.P.M.

DESCRIPTION OF CORNER EVIDENCE FOUND, AND ORIGINAL RECORD (IF KNOWN)

SEE RECORDATION FORM FOR SUBJECT SECTION PREVIOUSLY FILED.

DESCRIPTION OF MONUMENT AND ACCESSORIES ESTABLISHED  
TO PERPETUATE THE ORIGINAL LOCATION OF THIS CORNER:

Date of work: 6/14/71

SET IRON PIPE - MARKED TWO WITNESS TREES - SEE DIAGRAM ON REVERSE.

SKETCH, WITH COURSE AND DISTANCE TO ADJACENT CORNERS IF DETERMINED IN THIS SURVEY.  
(MAY SKETCH OR PASTE REPRODUCTION ON REVERSE SIDE.)

SEE OTHER SIDE.

Surveyor's Seal

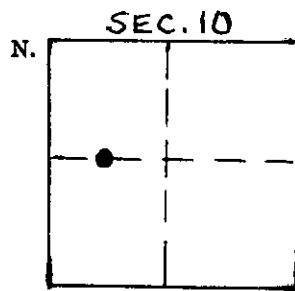
I, Jack H. Ninneman  
certify that the information shown herein is true and correct.

*Jack H. Ninneman*  
Signature of Ground Party Chief

J.W. Ninneman  
I, certify that I have carefully performed or reviewed the work done on the diagrammed corner as reported on this recordation form and approve the same.

*Jack W. Ninneman*  
Signature of Surveyor

DIAGRAM OF CORNER:



● = Corner recorded on the sheet

534 ES.  
Registration Number

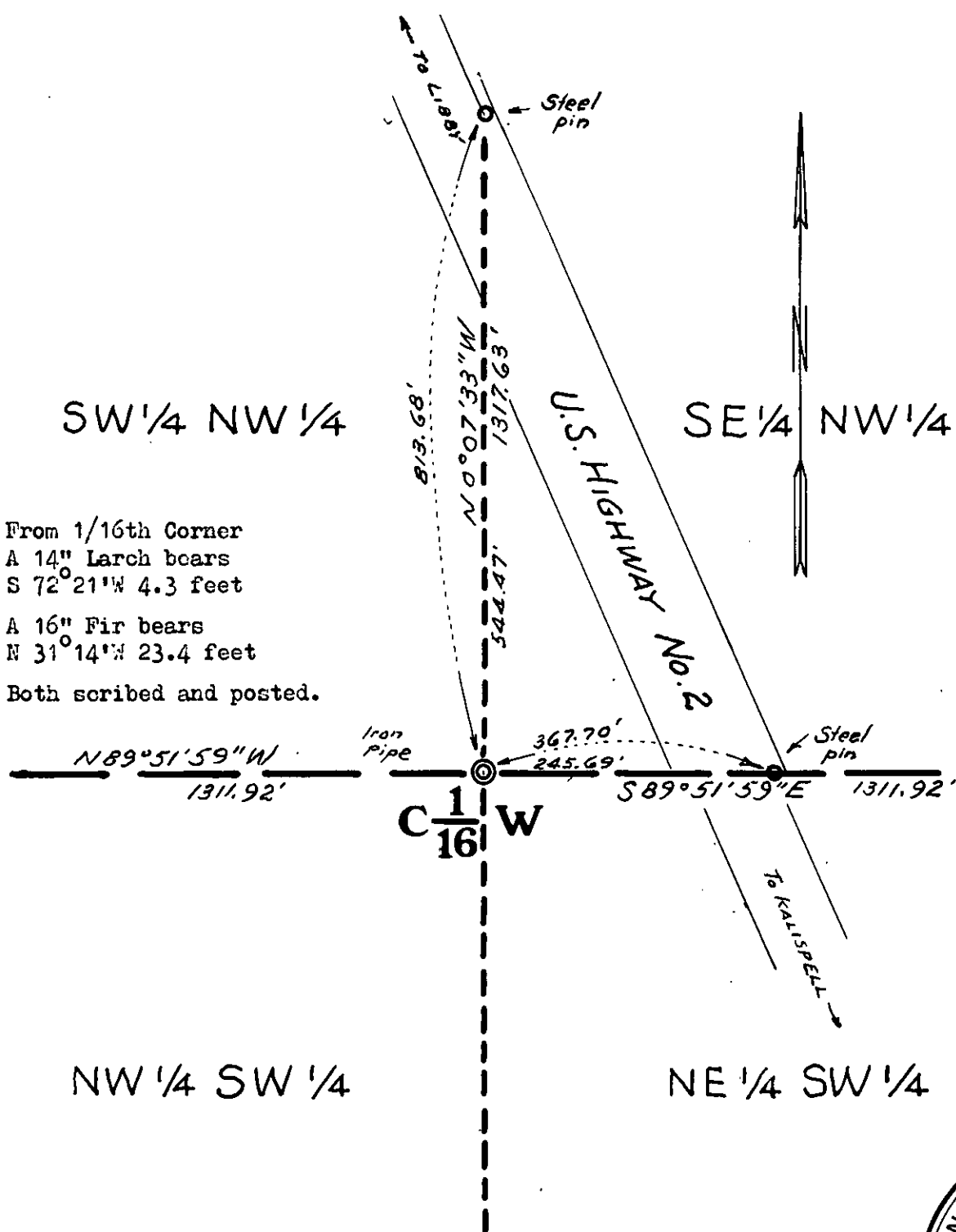
Office of Clerk and Recorder, County of Lincoln

This "corner record" was filed for record on the 5th day of August 1971, was noted on the cross-index plat and is assigned page No. 234, in book No. 1

*Eleanor L. Vaughn*  
County Official

From 1/16th Corner  
A 14" Larch bears  
S 72° 21' W 4.3 feet  
A 16" Fir bears  
N 31° 14' W 23.4 feet  
Both scribed and posted.

Both scribed and posted.



Section 10 Twp. 28 N., R. 30 W., M.P.M.

