

CERTIFIED LAND CORNER RECORDATION

Center of Section 10 Twp. 28 N., R. 30 W., M.P.M.

DESCRIPTION OF CORNER EVIDENCE FOUND, AND ORIGINAL RECORD (IF KNOWN)

All eight exterior corners are brass cap monuments
Set under supervision of Bureau of Land Management

DESCRIPTION OF MONUMENT AND ACCESSORIES ESTABLISHED
TO PERPETUATE THE ORIGINAL LOCATION OF THIS CORNER:

During 1970
Date of work: and Jan. 1971

Center of Section 10 not previously set

SKETCH, WITH COURSE AND DISTANCE TO ADJACENT CORNERS IF DETERMINED IN THIS SURVEY.
(MAY SKETCH OR PASTE REPRODUCTION ON REVERSE SIDE.)

SEE SKETCH ON REVERSE

Surveyor's Seal

I, Jack H. Ninneman
certify that the information shown herein is true and
correct.

Jack H. Ninneman
Signature of Ground Party Chief

I, *Jack W. Ninneman*
certify that I have carefully performed or reviewed the
work done on the diagrammed corner as reported on this
recordation form and approve the same.

Jack W. Ninneman
Signature of Surveyor

DIAGRAM OF CORNER:

N.
Center of Sec. 10
TWP. 28 N., R. 30 W.,
and others
See reverse side

= Corner recorded on the sheet

534 E.S.
Registration Number

Office of Clerk and Recorder, County of Lincoln

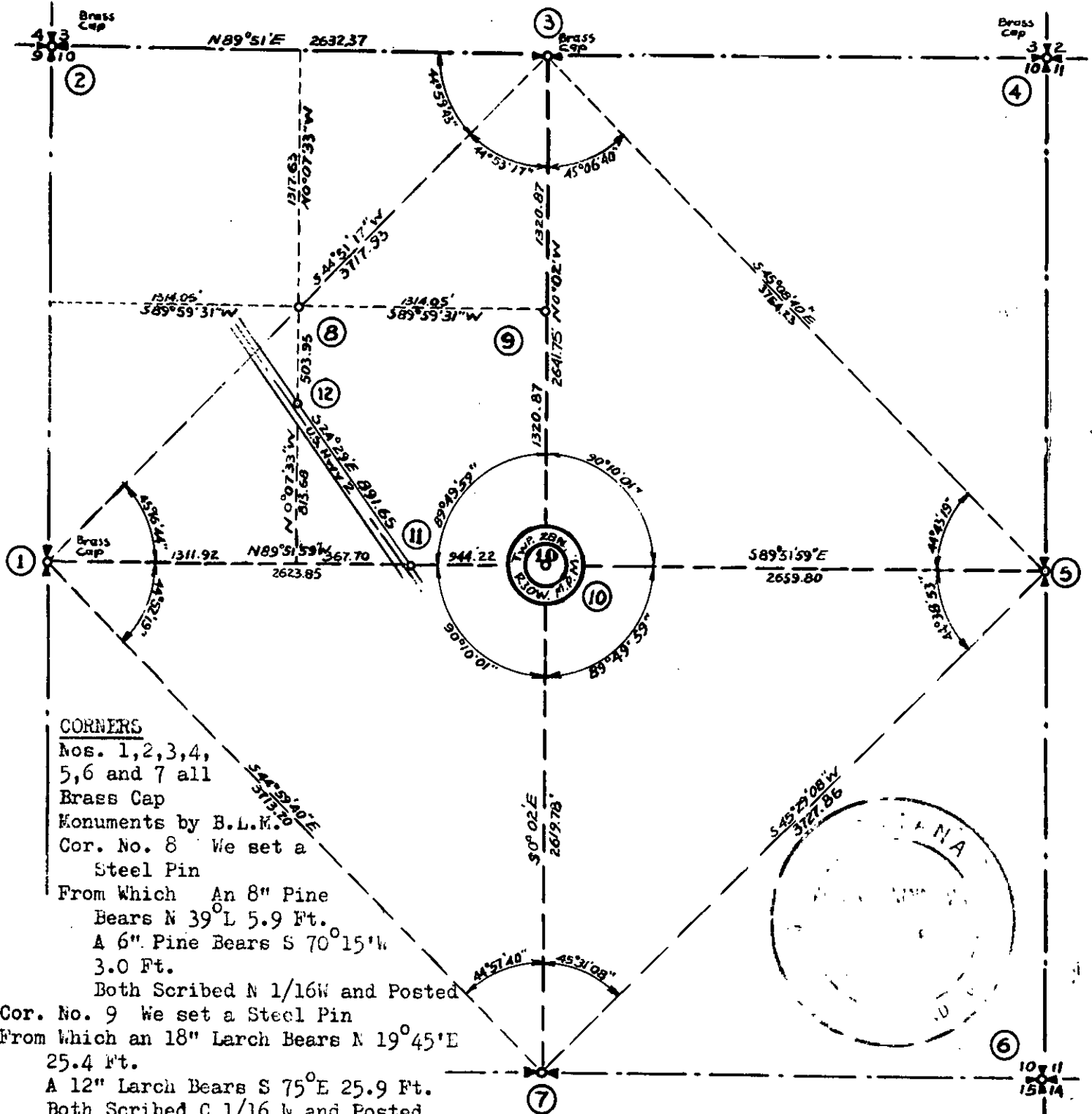
This "corner record" was filed for record on the 2nd. day of February 1971, was noted on the cross-index plat and is
assigned page No. 210, in book No. 1

ELEANOR L. VAUGHN,
County Official

Lincoln County, Montana.

Survey in Section 10 Twp. 28N., R.30 W., M.P.M.

Jan. 1971.



CORNERS

Nos. 1,2,3,4,

5,6 and 7 all

Brass Cap

Monuments by B.L.M.

Cor. No. 8 We set a

Steel Pin

From Which An 8" Pine

Bears N 39° L 5.9 Ft.

A 6" Pine Bears S 70° 15' W

3.0 Ft.

Both Scribed N 1/16 W and Posted

Cor. No. 9 We set a Steel Pin

From Which an 18" Larch Bears N 19° 45' E

25.4 Ft.

A 12" Larch Bears S 75° E 25.9 Ft.

Both Scribed C 1/16 W and Posted

Cor. No. 10 We Set a Steel Pin.

From Which an 18" Fir Bears S 88° W 12.6 Ft.

A 12" Pine Bears S 32° E 25.9 Ft.

Both Scribed C 1/4 B.T. and Posted

Cors. No. 11 and 12 We Set Steel Pins on line 45 Ft. From Apparent Center Line of Highway No. 2 at 90° to said Center Line.