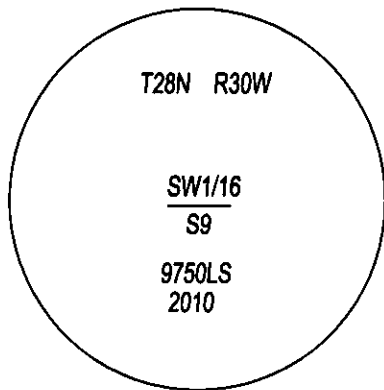
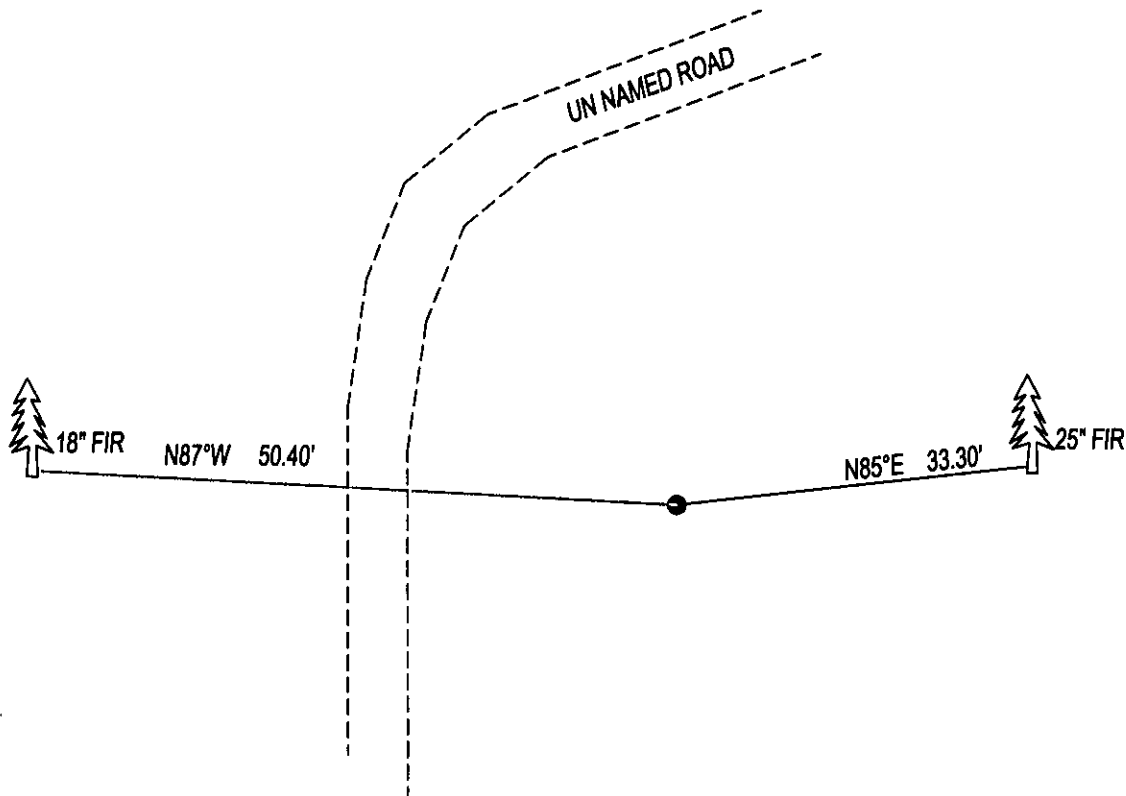


# CERTIFIED CORNER RECORDATION

CORNER SW1/16 SEC. 9 T. 28N, R. 30W, P.M.M., LINCOLN COUNTY

FOUND: 3 1/4" ALUM CAP STAMPED AS SHOWN, FROM WHICH;  
25" FIR WITH TAGS BEARS N85°E 33.30' SCRIBED SW1/16 S9 BT.  
18" FIR WITH TAGS BEARS N87°W 50.40' SCRIBED SW1/16 S9 BT.

MAINTENANCE: REMOVED LIMBS AND BRUSH FROM CORNER AREA.  
PAINTED 6" BAND AND SCRIBE AREA ON BTS.



SKETCH OF CORNER

## CERTIFICATION

I, DAN CROFT

CERTIFY THE INFORMATION SHOWN HEREIN IS TRUE AND CORRECT.

SIGNATURE GROUND PARTY CHIEF

I, MARC J. CARSTENS

CERTIFY THAT THIS CORNER RECORD CORRECTLY REPRESENTS WORK  
PERFORMED BY ME OR UNDER MY DIRECTION IN COMPLIANCE WITH THE  
"CORNER RECORDATION ACT" (70-22-101, ET SEQ., M.C.A.)

  
SIGNATURE OF SURVEYOR & SEAL

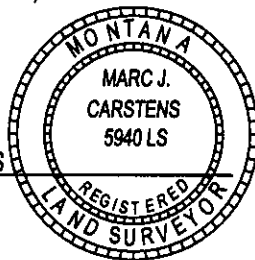
08-28-13 579/14

DATE

CARSTENS SURVEYING

EMPLOYER

5940LS  
REG. NO.



OFFICE OF CLERK AND RECORDER, COUNTY OF LINCOLN

THIS "CORNER RECORD" WAS FILED FOR 251292 BOOK: CCR CC&R'S PAGE: 12115 Pages: 1

AND IS ASSIGNED PAGE NO.        WAS NOT STATE OF MONTANA LINCOLN COUNTY

RECORDED: 05/12/2014 11:00 KOI: CC&R'S

TAMMY D. LAUER CLERK AND RECORDER

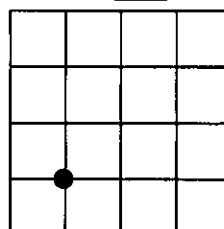
FEE: \$0.00

COUNTY OFFICIAL

CROSS INDEX NO. H-10 T. 28N, R. 30W, P.M.M.

ADOPTED JULY 1, 1981, MONTANA BOARD OF PROFESSIONAL ENGINEERS & LAND SURVEYORS

SEC. 9



● CORNER THIS SHEET