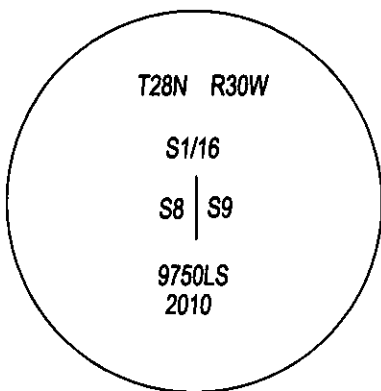
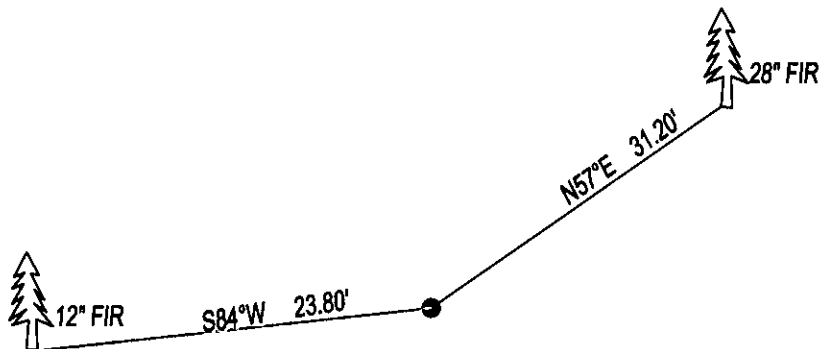


CERTIFIED CORNER RECORDATION

CORNER S1/16 SEC. 8 & 9 T. 28N, R. 30W, P.M.M., LINCOLN COUNTY

FOUND: 3 1/4" ALUM CAP STAMPED AS SHOWN, FROM WHICH;
 28" FIR WITH TAGS BEARS N57°E 31.20' SCRIBED S1/16 S9 BT.
 12" FIR WITH TAGS BEARS S84°W 23.80' SCRIBED S1/6 S8 BT.

MAINTENANCE: REMOVED LIMBS AND BRUSH FROM CORNER AREA.
 PAINTED 6" BAND AND SCRIBE AREA ON BTS.



SKETCH OF CORNER

CERTIFICATION

I, DAN CROFT
 CERTIFY THE INFORMATION SHOWN HEREIN IS TRUE AND CORRECT.

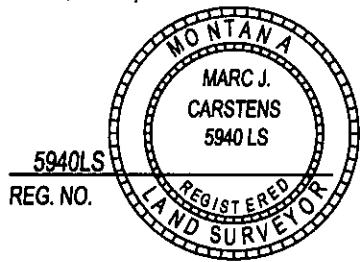
SIGNATURE GROUND PARTY CHIEF


I, MARC J. CARSTENS

CERTIFY THAT THIS CORNER RECORD CORRECTLY REPRESENTS WORK PERFORMED BY ME OR UNDER MY DIRECTION IN COMPLIANCE WITH THE "CORNER RECORDATION ACT" (70-22-101, ET SEQ., M.C.A.)


 SIGNATURE OF SURVEYOR & SEAL

05-09-14
 DATE
CARSTENS SURVEYING
 EMPLOYER



OFFICE OF CLERK AND RECORDER, COUNTY OF LINCOLN
 THIS "CORNER RECORD" WAS FILED F 251290 BOOK; CCR CC&R'S PAGE: 12113 Pages: 1
 WAS NOT STATE OF MONTANA LINCOLN COUNTY
 AND IS ASSIGNED PAGE NO. _____ RECORDED: 05/12/2014 10:50 KOI: CC&R'S
 COUNTY OFFICIAL TAMMY D. LAUER CLERK AND RECORDER
 FEE: \$0.00 BY: 
 FOR: CARSTENS LAND SURVEYING P.O. BOX 1374, POLSON, MONTANA
 CROSS INDEX NO. H-9 T. 28N, R. 30W, P.M.M.
 ADOPTED JULY 1, 1981, MONTANA BOARD OF PROFESSIONAL ENGINEERS & LAND SURVEYORS

