

CERTIFIED CORNER RECORDATION

Corner C-W 1/16 S9 T 28 N. R. 30 W. P.M.M. Lincoln County

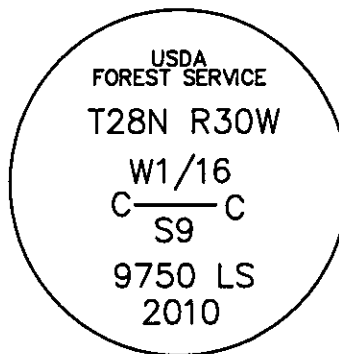
- I. Record: 1900 Subdivision of Fractional Township 28 North, Range 30 West by Burton S. Adams.
2010 Certificate Survey No.4060 Lincoln County Records, by Steven A. Boyer 9750LS.
- II. Found: A field search found no monuments.
- III. Perpetuation: At the corner point, determined by survey, set a 5/8 ins. diam. steel rebar 24 ins. long, 22 ins. in the ground, with a 3 1/4 ins. diam. Aluminum cap marked as shown below from which:

A Steel Post, 6 foot long, bears North, 4.00 ft. dist.on line.
A Steel Post, 6 foot long, bears South 2.00 ft. dist. on line.

Attached Land Survey Monument and Property Boundary stickers and Bearing Tree tags to Steel Posts. Corner falls in burn area, no living trees within limits.

Magnetic declination: 18° East

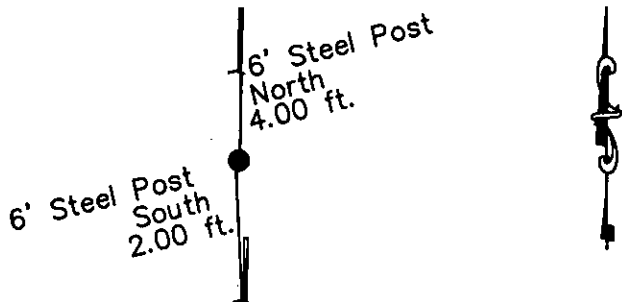
Equipment used: Hand compass and loggers tape



NOTE: Refer to Certificate of Survey No. 4060 Lincoln County Records for additional survey information.

Kootenai Surveyors Inc., 314 California Av., Libby, MT. 59923 (406) 293-4354

PCTC CRAZYMAN



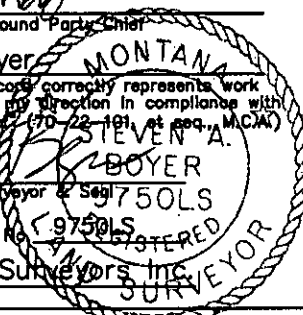
SKETCH OF CORNER

CERTIFICATION

I, Kelly Rooney
certify the information shown herein is true and correct.
Kelly Rooney
Signature Ground Party Chief

I, Steven A. Boyer
certify that this Corner Record correctly represents work performed by me or under my direction in compliance with the "Corner Recordation Act" (70-22-101, et seq., M.C.A.)
Steven A. Boyer
Signature of Surveyor & Sealer

Date: 04/15/2011 Reg. No. 9750LS
Employer: Kootenai Surveyors Inc.



Office of Clerk and Recorder, County of Lincoln This "corner

record" was filed for record on _____

was noted on the cross-in 234329 BOOK: CCR CC&R'S PAGE: 11905 Pages: 1

book No. _____ STATE OF MONTANA LINCOLN COUNTY

RECORDED: 08/23/2011 3:35 KOI: CC&R'S

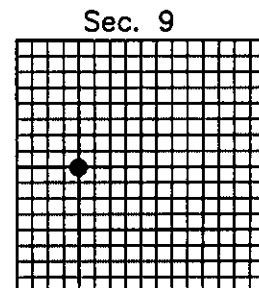
TAMMY D. LAUER CLERK AND RECORDER

FEE: \$0.00

BY: *Heather Lauer*

TO: FILED

Cross Index No. G 10 T. 28N R. 30W P.M., MT



• corner this sheet