

CERTIFIED CORNER RECORDATION

Corner W 1/16 S9 T 28 N. R. 30 W. P.M.M. Lincoln County

- I. Record: 1900 Subdivision of Fractional Township 28 North, Range 30 West by
Burton S. Adams.
2010 Certificate of Survey No.4060 Lincoln County Records, by Steven A. Boyer 9750LS.
- II. Found: A field search found a 5 inch diameter wooden post, 6.00 feet tall, with
Aluminum tag marked "Corner 2, Golden Back Achers Placer" origin unknown.
- III. Perpetuation: At the corner point, determined by survey, set a 5/8 ins. diam.
steel rebar 24 ins. long, 22 ins. in the ground, with a 3 1/4 ins. diam.
Aluminum cap marked as shown below from which:

A Larch, 12 ins. diam., bears N1°E, 7.40 ft. dist., scribed W 1/16 S4 BT.

A Douglas fir, 11 ins. diam., bears S21°E, 11.90 ft. dist., scribed W 1/16 S9 BT.

A wood post, 5 ins. diam., 6.00 feet tall with Aluminum tag "marked Corner 2
Golden Back Achers Placer", bears S3°W, 3.50 ft. dist.

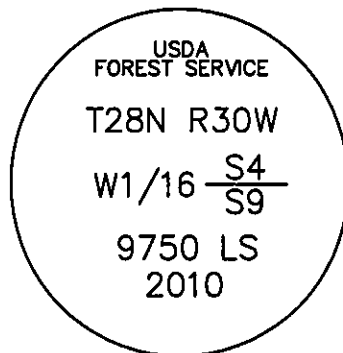
Painted faces and 6 in. wide red bands to all bearing trees and attached Land
Survey Monument and Bearing Tree signs.

Set 6 ft. long steel post with attached Survey Monument and Property Line stickers
on line 3 ft. West and 3 Ft. North.

Magnetic declination: 18° East

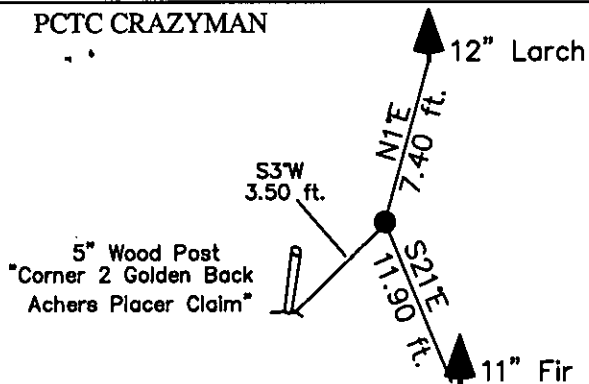
Equipment used: Hand compass and loggers tape

NOTE: Refer to Certificate of Survey No. 4060
Lincoln County Records for additional survey
information.



Kootenai Surveyors Inc., 314 California Av., Libby, MT. 59923 (406) 293-4354

PCTC CRAZYMAN



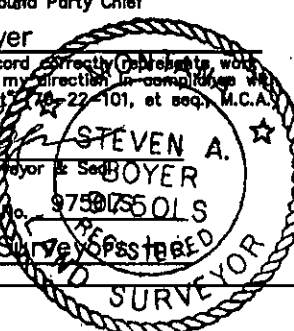
SKETCH OF CORNER

CERTIFICATION

I, Kelly Rooney
certify the information shown herein is true and correct.
Kelly Rooney
Signature Ground Party Chief

I, Steven A. Boyer
certify that this Corner Record correctly represents work
performed by me or under my direction in compliance with
the "Corner Recordation Act", 19-22-101, et seq., M.C.A.
Steven A. Boyer
Signature of Surveyor & Sealer

Date: 04/15/2011 Reg. No. 9750LS
Employer: Kootenai Surveyors Inc.



Office of Clerk and Recorder, County of Lincoln. This "corner

record" was filed for record on 234328 BOOK: CCR CC&R'S PAGE: 11904 Pages: 1

was noted on the cross-in STATE OF MONTANA LINCOLN COUNTY
book No. RECORDED: 08/23/2011 3:30 KOI: CC&R'S

TAMMY D. LAUER CLERK AND RECORDER

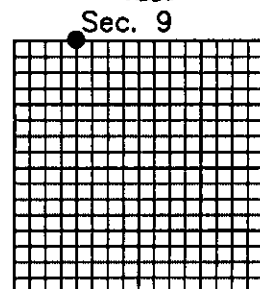
FEE: \$0.00

TO: FILED

BY: *Francis Thomas Deputy*

Cross Index No. E 10 T. 28N R. 30W P.M., MT

Adopted July 1, 1981, Montana Board of Professional Engineers & Land Surveyors



• corner this sheet