

# CERTIFIED CORNER RECORDATION

CORNER NW 1/16 S4 T.28 N., R.30 W., P.M.M LINCOLN COUNTY

RECORD:

NONE

FOUND EVIDENCE:

NONE

PERPETUATION:

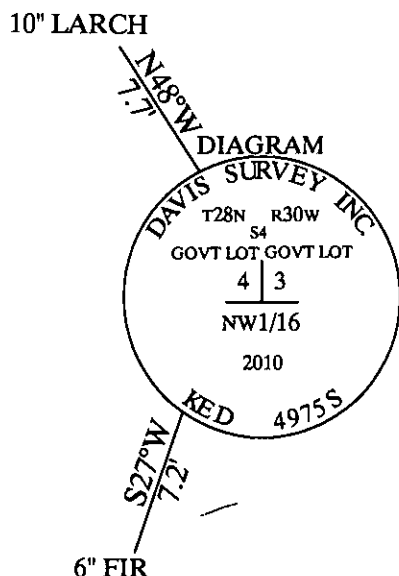
Set a 24 inch long 5/8 inch dia. rebar 20 inches in the ground capped with a 3 1/4 inch Alum. Cap stamped (see diagram below).  
From Which:

A 6 inch DBH Fir scribed X BT bears S27°W 7.2 ft. dist.

A 10 inch DBH Larch scribed X BT bears N48°W 7.7 ft. dist.

Painted 6 inch wide bands and attached bearing tree tags and warning signs to trees.

MAGNETIC DECLINATION: 15° E



CERTIFICATION

I, Calen Williamson

Certify the information shown herein is true and correct  
Signature of Ground Party Chief

I, Calen Williamson

Ken S. Davis

certify that this Corner Record correctly represents work performed by me or under my direction in compliance with the "Corner Recordation Act"

(70-22-101, et seq., M.C.A.)

Signature of Surveyor & Seal

Date 5/11/11 Reg. No. 4975-S

Employer Davis Surveying Inc

## SKETCH OF CORNER

Office of Clerk and Recorder, County of \_\_\_\_\_

This "corner record" was filed for record on 232579 BOOK: CCR CCR'S PAGE: 11896 Pages: 2

was noted on STATE OF MONTANA LINCOLN COUNTY

No. \_\_\_\_\_ RECORDED: 05/12/2011 1:50 KOI: CCR'S

In book No. JAMMY D. LAUER CLERK AND RECORDER

FEE: \$0.00

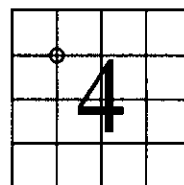
TO: FILED

BY: Jammy D. Lauer

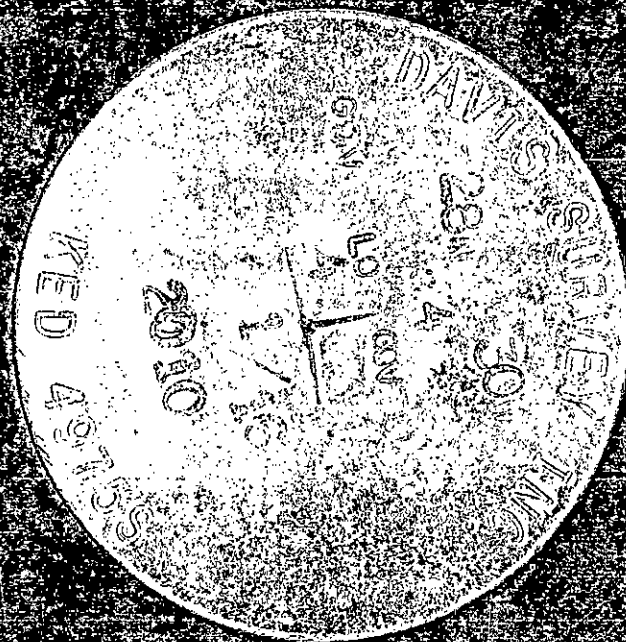
Deputy

Cross Index No. B-10 T. 28 N., R. 30 W., P.M.M.

## SECTION



THIS CORNER



NW 1/16 Sec 4 T28N R30W

Record - None

Found - None

Set - from section breakdown

set 24" 5/8 rebar w/  
3/4" Alum cap

from which a 6" DBH  
fir bears S27°W 7.2 Ft

and a 10" DBH Larch (Tamarack)  
bears N 48°W 7.7 Ft

Dec 15°

Trees Scribed X BT