

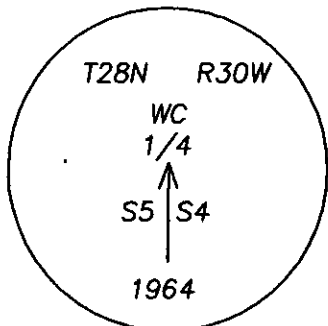
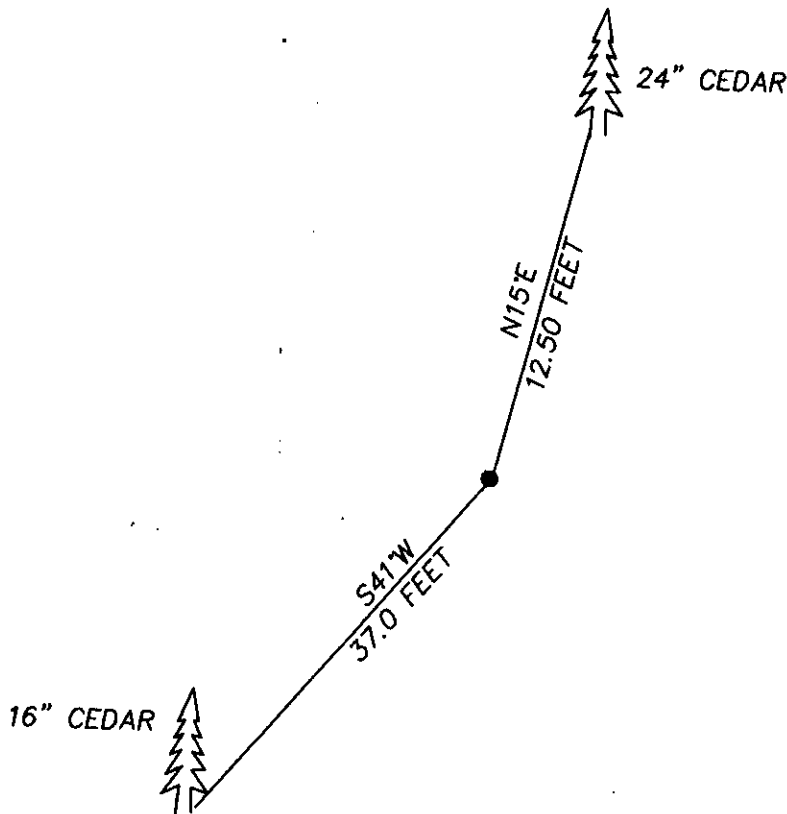
CERTIFIED CORNER RECORDATION

Corner E1/16 SECTION 5 T28N R. 30W P.M.M. County LINCOLN

G.L.O. RECORD: 39.60 CHAINS; RIGHT BANK OF LIBBY CREEK, AS POINT FOR 1/4 SECTION CORNER FALLS IN CREEK AT THIS POINT SET A LIME STONE 15x12x4, 10 INS. INTO THE GROUND FOR WITNESS CORNER TO 1/4 CORNER, MARKED WC 1/4 ON WEST FACE, FROM WHICH; 14" CEDAR BEARS N14°45'E 19 LKS. (12.54') MARKED WC1/4 S4 BT. 6" FIR BEARS S39°45'W 6 LKS. (3.96') MARKED WC1/4 S5 BT.

FOUND: 3 1/4" BRASS CAP , STAMPED AS SHOWN, FROM WHICH:

24" CEDAR BEARS N15°E 12.50' WITH OVERGROWN SCRIBE.  
16" CEDAR BEARS S41°W, 37.0' WITH OVERGROWN SCRIBE



SKETCH OF CORNER

CERTIFICATION

I, DAN CROFT

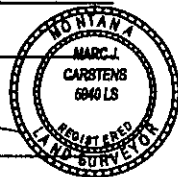
certify the information shown herein is true and correct.

*[Signature]*  
Signature Ground Party Chief

I, MARC J. CARSTENS

certify that this Corner Record correctly represents work performed by me or under my direction in compliance with the "Corner Recordation Act" (70-22-101, et seq., M.C.A.)

*[Signature]*  
Signature of Surveyor & Seal



Date: 8-5-08 Reg. No. 5940-LS

Employer: CARSTENS LAND SURVEYING

Office of Clerk and Recorder, County of LINCOLN This "corner

record" was filed for record on

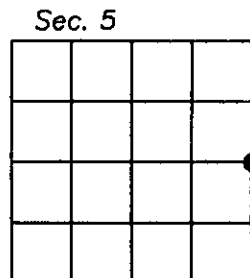
was noted on the cross-index plat

book No. \_\_\_\_\_

213633 BOOK: CCR CC&R'S PAGE: 11264 Pages: 1  
STATE OF MONTANA LINCOLN COUNTY  
RECORDED: 08/12/2008 10:10 KOI: CC&R'S  
TAMMY D. LAUER CLERK AND RECORDER  
FEE: \$0.00 BY: *[Signature]*  
TO: CARSTENS LAND SURVEYING P.O. BOX 1374, POLSON, MONTANA

Cross Index No. C-9 T25N R. 23W PMM

Adopted July 1, 1981, Montana Board of Professional Engineers & Land Surveyors



• corner this sheet

# SECTION 5 T28N R30W

