

CERTIFIED CORNER RECORDATION

Corner Cor.2 Comet Placer T 28 N. R. 30 W. P.M.M. LINCOLN County
Cor.7 Hogum Placer
MS 10377

I. Record: 1922 Mineral survey by W. Pennington: Set a post 5 ins. square, 4 1/2 ft. long 1 1/2 ft. deep, from which:

A fir, 9 ins. diam., bears S.11°W., 48.70 ft. dist., scribed BT 2C-7H 10377.
A pine, 8 ins. diam., bears S.64°E., 63.10 ft. dist., scribed BT 2C-7H 10377.

II. Found: A fir snag, 15 ins. diam., bears S.11°W., 48.70 ft. dist. with visible scribing.
A pine, 17 ins. diam., bears S. 64°E., 63.10 ft. dist., with healed face.

III. Perpetuation: At the position from a distance, distance tie from found original bearing trees, set a aluminum pipe 2 1/2 ins. diam. 30 ins. long 24 ins. in the ground, with a 3/4 in. diam. aluminum cap marked as shown below from which:

A fir, 8 ins. diam., bears N.1°W., 11.70 ft. dist., scribed C-2 H-7 10377 BT.

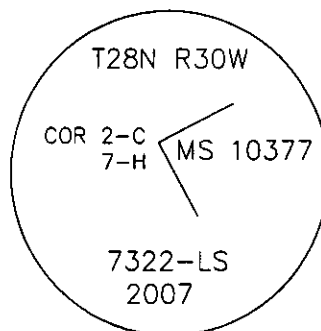
Painted faces and 6 in. wide red bands around BT's and attached Bearing Tree and Land Survey Monument signs.

Set a steel post 3 ft. North from set monument with attached Land Survey Monument stickers.

Raise a collar of stone 2 ft. diam. around the set monument.

Magnetic declination: 18° East assumed

Equipment used: Hand compass and loggers tape

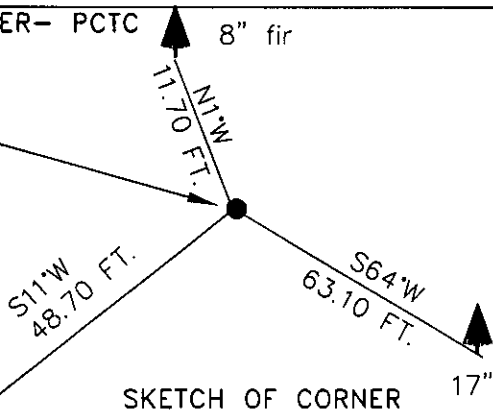


Kootenai Surveyors Inc., 314 California Av., Libby, MT. 59923 (406) 293-4354

COMET PLACER- PCTC

8" fir

Cor. 2-C
Cor. 7-H
MS 10377



SKETCH OF CORNER

CERTIFICATION

I, John Damon
certify the information shown herein is true and correct.

John Damon
Signature Ground Party Chief

I, Alvah F. Hughes
certify that this Corner Record correctly represents work performed by me or under my direction in compliance with the "Corner Recordation Act" (70-27-101, et seq. M.C.A.)

Alvah F. Hughes
Signature of Surveyor & Seal

Date: 7/27/2007 Reg. No. 7322-LS

Employer: Kootenai Surveyors Inc.

Office of Clerk and Recorder, County of Lincoln. This "corner

record" was filed for record 205550 BOOK: CCR CC&R'S PAGE: 11098 Pages: 1

was noted on the cross-index STATE OF MONTANA LINCOLN COUNTY

book No. RECORDED: 08/24/2007 8:43 KOI: CC&R'S

TAMMY D. LAUER CLERK AND RECORDER

FEE: \$0.00

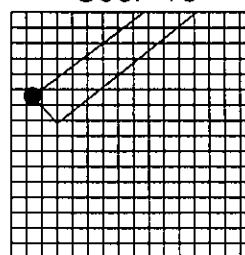
BY: Tammy D. Lauer

TO: AL HUGHES-SURVEYOR P.O. BOX 393, LIBBY MT 59923

Cross Index No. T. 28N. R. 30W. P.M., MT

Adopted July 1, 1981, Montana Board of Professional Engineers & Land Surveyors

Sec. 19



• corner this sheet