

# CERTIFIED CORNER RECORDATION

Corner Cor.6 Hogum Placer T. 28 N. R. 30 W. P.M.M. LINCOLN County  
MS 10377

I. Record: 1922 Mineral survey by W. Pennington: Set a post 5 ins. square, 4 1/2 ft. long 1 1/2 ft. deep, from which:

- A Tamarack, 14 ins. diam., bears S.16°E., 38.30 ft. dist., scribed BT 6H 10377.
- A pine, 18 ins. diam., bears S.50°W., 19.50 ft. dist., scribed BT 6H 10377.

II. Found: A rotted 4 ins. square post 1 in. above ground from which:

- A Tamarack, 21 ins. diam., bears S.16°E., 38.30 ft. dist. with healed face.
- A pine, 29 ins. diam., bears S. 50°W., 19.50 ft. dist. ,with healed face.

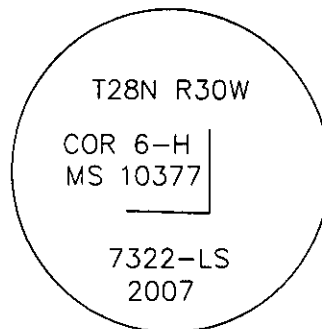
III. Perpetuation: At the position from the found original corner post remains, set a aluminum pipe 2 1/2 ins. diam. 30 ins. long 24 ins. in the ground, with a 3 1/4 in. diam. aluminum cap marked as shown below.

Painted faces and 6 in. wide red bands around BT's and attached Bearing Tree and Land Survey Monument signs.

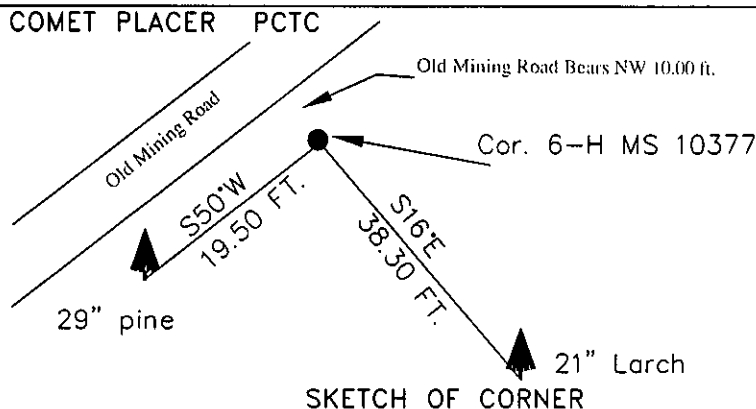
Set a steel post with attached Land Survey Monument stickers 2 ft. West from set monument.

Magnetic declination: 18° East

Equipment used: Hand compass and loggers tape



Kootenai Surveyors Inc., 314 California Av., Libby, MT. 59923 (406) 293-4354



CERTIFICATION

I, John Damon  
certify the information shown herein is true and correct.

John Damon  
Signature Ground Party Chief

I, Alvah F. Hughes  
certify that this Corner Record correctly represents work performed by me or under my direction in compliance with the "Corner Recordation Act" (70-22-101 et seq., M.C.A.).

Alvah F. Hughes  
Signature of Surveyor & Seal

Date: 7/27/2007 Reg. No. 7322-LS

Employer: Kootenai Surveyors Inc.

Office of Clerk and Recorder, County of Lincoln This "corner

record" was filed for record on 205549 BOOK: CCR CC&R'S PAGE: 11097 Pages: 1

was noted on the cross-index | STATE OF MONTANA LINCOLN COUNTY

book No. RECORDED: 08/24/2007 8:42 KOI: CC&R'S

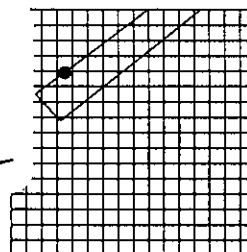
TAMMY D. LAUER CLERK AND RECORDER

FEE: \$0.00

BY: Alvah F. Hughes

TO: AL HUGHES-SURVEYOR P.O. BOX 393, LIBBY MT 59923

Sec. 19



Cross Index No. \_\_\_\_\_ T. 28N. R. 30W. P.M., MT

Adopted July 1, 1981, Montana Board of Professional Engineers & Land Surveyors

• corner this sheet