

# CERTIFIED CORNER RECORDATION

Corner Cor.1 Comet Placer T. 28 N. R. 30 W. P.M.M. LINCOLN County  
MS 10377

I. Record: 1922 Mineral survey by W. Pennington: Set a post 5 ins. square, 4 1/2ft. long 1 1/2 ft. deep, from which:

A tamarack, 12 ins. diam., bears S.7°W., 13.40 ft. dist., scribed BT C-1 10377.  
A pine, 12 ins. diam., bears S.77°E., 28.30 ft. dist., scribed BT C-1 10377.

II. Found:

A Tamarack snag, 19 ins. diam., bears S.7°W., 13.40 ft. dist. with visible scribing.  
A pine stump, bears S.77°E., 28.30 ft. dist., with visible axe mks.

III. Perpetuation: At the position from a distance, distance tie from found original bearing tree remains, set a aluminum pipe 2 1/2 ins. diam. 30 ins. long 24 ins. in the ground, with a 3 1/4 in. diam. aluminum cap marked as shown below from which :

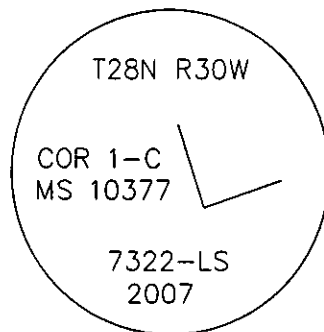
A Hemlock, 17 ins. diam., bears S. 2°E., 38.10 ft. dist., scribed 1-C 10377 BT.  
A Hemlock, 7 ins. diam., bears S. 63°W., 12.00 ft. dist., scribed 1-C 10377 BT.

Painted faces and 6 in. wide red bands around BT's and attached Bearing Tree and Land Survey Monument signs.

Raise a collar of stone 1 ft. diam. around the set monument.

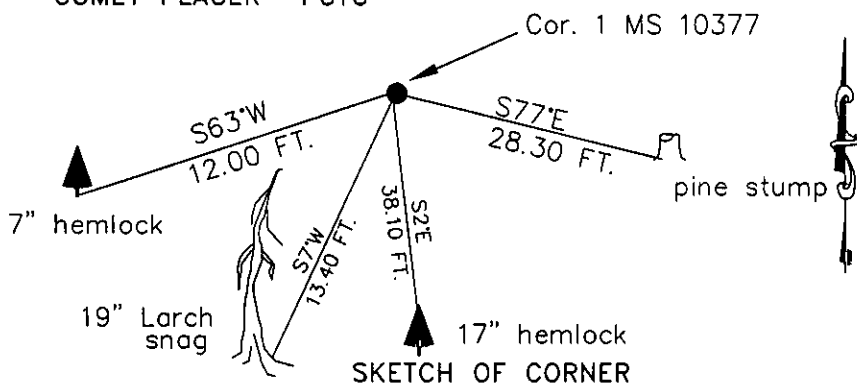
Magnetic declination: 18° East assumed

Equipment used: Hand compass and loggers tape



Kootenai Surveyors Inc., 314 California Av., Libby, MT. 59923 (406) 293-4354

COMET PLACER- PCTC



CERTIFICATION

I, John Damon  
certify the information shown herein is true and correct.  
Signature Ground Party Chief  
Alvah F. Hughes  
I, Alvah F. Hughes  
certify that this Corner Record correctly represents work performed by me or under my direction in compliance with the "Corner Recordation Act", (70-22-101, et seq. M.C.A.)  
Signature of Surveyor & Seal  
Date: 7/27/2007 Reg. No. 7322-LS  
Employer: Kootenai Surveyors Inc.

Office of Clerk and Recorder, County of Lincoln. This "corner

record" was filed for record 205548 BOOK: CCR CC&R'S PAGE: 11096 Pages: 1

was noted on the cross-in STATE OF MONTANA LINCOLN COUNTY

book No. RECORDED: 08/24/2007 8:41 KOI: CC&R'S

TAMMY D. LAUER CLERK AND RECORDER

FEE: \$0.00

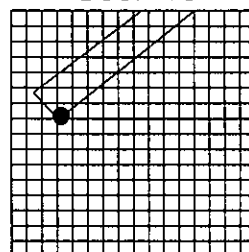
BY: Alvah F. Hughes

TO: AL HUGHES-SURVEYOR P.O. BOX 393, LIBBY MT 59923

Cross Index No. T. 28N. R. 30W. P.M., MT

Adopted July 1, 1981, Montana Board of Professional Engineers & Land Surveyors

Sec. 19



• corner this sheet