

# CERTIFIED CORNER RECORDATION

Corner W 1/4 S14 T 28 N. R. 30 W. P.M.M. LINCOLN County

I. Record: 1900 GLO survey by Burton Adams: Set a granite stone 14x10x9 ins.xx ins. in the ground, marked 1/4 on the W. face, from which:

A larch, xx ins. diam., bears N.44°15'E., 13 lks. dist., mkd. 1/4 S14 BT.

A , xx ins. diam., bears N.43°30'W., 30 lks. dist., mkd. 1/4 S15 BT.

1969 BLM Remon: Set a iron post with brass cap from original stone monument and the remains of the original bearing trees:

A larch, 16 ins. diam., bears N.44°15'E., 13 lks.(9.90 ft.) dist., mkd. with a overgrown blaze.

A stump hole, bears N.43°30'W., 30 lks.(19.80 ft.) dist., with fallen log mkd. with overgrown blaze.

II. Found: During a field search of area a 3 ft. long squared off wooden post was found (origin unknown), no other monuments or related accessories were found.

III. Perpetuation: At a point determined from survey, set a 5/8 in. diam. steel rebar 24 ins. long 22 ins. in the ground with a 3 1/4 in. diam. Alum. cap marked as shown below from which:

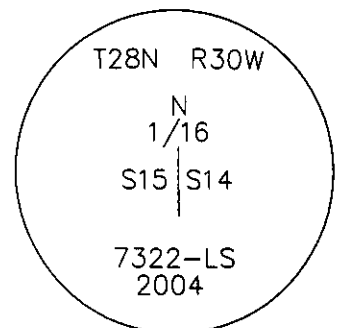
A Douglas fir, 11 ins. diam., bears N°62W., 28.20 ft. dist., scribed N 1/6 S15 BT.

A Douglas fir, 7 ins. diam., bears N.74°E., 6.90 ft. dist., scribed N 1/6 S14 BT.

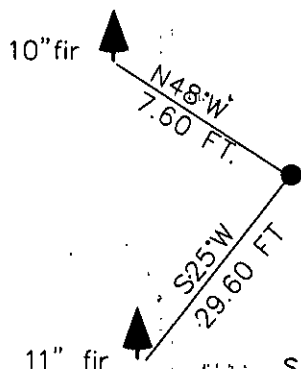
Painted faces and 6 in. wide red bands to all bearing trees and attached Land Survey Monument and Bearing Tree signs.

Magnetic declination: 20° East assumed

Equipment used: Hand compass and loggers tape



Kootenai Surveyors Inc., 314 California Av., Libby, MT. 59923 (406) 293-4354



SKETCH OF CORNER

CERTIFICATION

I, Kenneth Kern certify the information shown herein is true and correct.

Alvah F. Hughes Signature Ground Party Chief

I, Alvah F. Hughes certify that this Corner Record correctly represents work performed by me or under my direction in compliance with the "Corner Recordation Act" (70-22-101, et seq., M.C.A.)

Alvah F. Hughes, 7322LS Signature of Surveyor & Seal

Date: 04/26/2004 Reg. No. 7322-LS

Employer: Kootenai Surveyors Inc.

Office of Clerk and Recorder, County of Lincoln This "corner

record" was filed for r 190120 BOOK: CCR CC&R'S PAGE: 10902 Pages: 1

was noted on the cro: STATE OF MONTANA LINCOLN COUNTY

book No. RECORDED: 12/06/2005 9:20 KOI: CC&R'S

CORAL M. CUMMINGS CLERK AND RECORDER

FEE: \$0.00

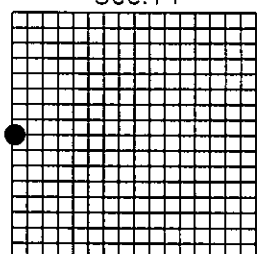
BY: [Signature]

TO: AL HUGHES-SURVEYOR P.O. BOX 393, LIBBY MT 59923

Cross Index No. K 19 T. 28N. R. 30W. P.M., MT

Adopted July 1, 1981, Montana Board of Professional Engineers & Land Surveyors

Sec.14



• corner this sheet