

CERTIFIED CORNER RECORDATION

Corner C 1/4 S14 T 28 N. R. 30 W. P.M.M. LINCOLN County

I. Record: None

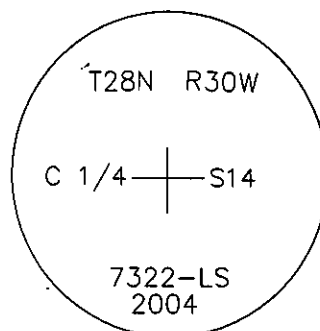
II. Found: During a field search of area no monuments or related accessories were found.

III. Perpetuation: At a point determined from survey, set a 5/8 in. diam. steel rebar 24 ins. long 22 ins. in the ground with a 3 1/4 in. diam. Alum. cap marked as shown below from which:

A Douglas fir, 12 ins. diam., bears N³⁰W., 13.50 ft. dist., scribed C 1/4 S14 BT.

A Douglas fir, 12 ins. diam., bears S⁶⁹W., 21.80 ft. dist., scribed C 1/4 S14 BT.

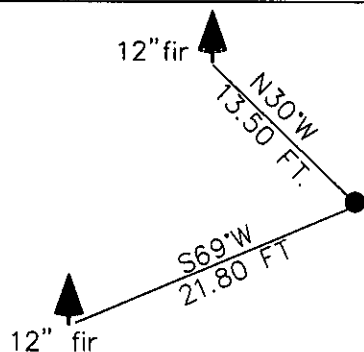
Painted faces and 6 in. wide red bands to all bearing trees and attached Land Survey Monument and Bearing Tree signs.



Magnetic declination: 20° East assumed

Equipment used: Hand compass and loggers tape

Kootenai Surveyors Inc., 314 California Av., Libby, MT. 59923 (406) 293-4354



SKETCH OF CORNER

CERTIFICATION

I, Kenneth Kern
 certify the information shown herein is true and correct.
Kenneth Kern
 Signature Ground Party Chief 7322LS

I, Alvah F. Hughes
 certify that this Corner Record correctly represents work performed by me or under my direction in compliance with the "Corner Recordation Act" (70-22-101 et seq., M.C.A.)
Alvah F. Hughes 7322LS
 Signature of Surveyor & Seal

Date: 04/26/2004 Reg. No. 7322-LS
 Employer: Kootenai Surveyors Inc.

Office of Clerk and Recorder, County of Lincoln. This "corner

record" was filed for r 190119 BOOK: CCR CC&R'S PAGE: 10901 Pages: 1

was noted on the cro: STATE OF MONTANA LINCOLN COUNTY

book No. RECORDED: 12/06/2005 9:17 KOI: CC&R'S

CORAL M. CUMMINGS CLERK AND RECORDER

FEE: \$0.00

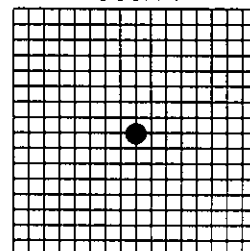
BY: Deanne Perry

TO: AL HUGHES-SURVEYOR P.O. BOX 393, LIBBY MT 59923

Cross Index No. L 19 T. 28N. R. 30W. P.M., MT

Adopted July 1, 1981, Montana Board of Professional Engineers & Land Surveyors

Sec.14



• corner this sheet